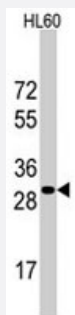


RPS6 polyclonal antibody

Catalog # PAB3819

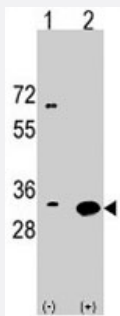
Size 400 uL

Applications



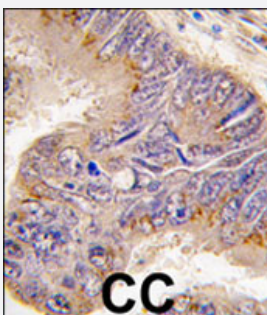
Western Blot (Cell lysate)

Western blot analysis of RPS6 polyclonal antibody (Cat # PAB3819) in HL-60 cell line lysates (35 ug/lane). RPS6 (arrow) was detected using the purified polyclonal antibody (1:1000 dilution).



Western Blot (Transfected lysate)

Western blot analysis of RPS6 (arrow) using rabbit RPS6 polyclonal antibody (Cat # PAB3819). 293 cell lysates (2 ug/lane) either nontransfected (Lane 1) or transiently transfected with the RPS6 gene (Lane 2) (Origene Technologies).



Immunohistochemistry (Formalin/PFA-fixed paraffin-embedded sections)

Formalin-fixed and paraffin-embedded human colon carcinoma tissue reacted with RPS6 polyclonal antibody (Cat # PAB3819), which was peroxidase-conjugated to the secondary antibody, followed by DAB staining. This data demonstrates the use of this antibody for immunohistochemistry; clinical relevance has not been evaluated.

Specification

Product Description

Rabbit polyclonal antibody raised against synthetic peptide of RPS6.

Immunogen

A synthetic peptide (conjugated with KLH) corresponding to N-terminus of human RPS6.

Host	Rabbit
Reactivity	Human
Form	Liquid
Purification	Protein A purification
Recommend Usage	Western Blot (1:1000) The optimal working dilution should be determined by the end user.
Storage Buffer	In PBS (0.09% sodium azide)
Storage Instruction	Store at 4°C. For long term storage store at -20°C. Aliquot to avoid repeated freezing and thawing.
Note	This product contains sodium azide: a POISONOUS AND HAZARDOUS SUBSTANCE which should be handled by trained staff only.

Applications

- Western Blot (Cell lysate)

Western blot analysis of RPS6 polyclonal antibody (Cat # PAB3819) in HL-60 cell line lysates (35 ug/lane). RPS6 (arrow) was detected using the purified polyclonal antibody (1:1000 dilution).

- Western Blot (Transfected lysate)

Western blot analysis of RPS6 (arrow) using rabbit RPS6 polyclonal antibody (Cat # PAB3819). 293 cell lysates (2 ug/lane) either nontransfected (Lane 1) or transiently transfected with the RPS6 gene (Lane 2) (Origene Technologies).

- Immunohistochemistry (Formalin/PFA-fixed paraffin-embedded sections)

Formalin-fixed and paraffin-embedded human colon carcinoma tissue reacted with RPS6 polyclonal antibody (Cat # PAB3819), which was peroxidase-conjugated to the secondary antibody, followed by DAB staining. This data demonstrates the use of this antibody for immunohistochemistry; clinical relevance has not been evaluated.

Gene Info — RPS6

Entrez GeneID	6194
Protein Accession#	NP_001001:P62753
Gene Name	RPS6
Gene Alias	-
Gene Description	ribosomal protein S6

Omim ID [180460](#)

Gene Ontology [Hyperlink](#)

Gene Summary

Ribosomes, the organelles that catalyze protein synthesis, consist of a small 40S subunit and a large 60S subunit. Together these subunits are composed of 4 RNA species and approximately 80 structurally distinct proteins. This gene encodes a cytoplasmic ribosomal protein that is a component of the 40S subunit. The protein belongs to the S6E family of ribosomal proteins. It is the major substrate of protein kinases in the ribosome, with subsets of five C-terminal serine residues phosphorylated by different protein kinases. Phosphorylation is induced by a wide range of stimuli, including growth factors, tumor-promoting agents, and mitogens. Dephosphorylation occurs at growth arrest. The protein may contribute to the control of cell growth and proliferation through the selective translation of particular classes of mRNA. As is typical for genes encoding ribosomal proteins, there are multiple processed pseudogenes of this gene dispersed through the genome. [provided by RefSeq]

Other Designations 40S ribosomal protein S6|OTTHUMP00000021120|phosphoprotein NP33

Publication Reference

- [The organization of the intron-containing human S6 ribosomal protein \(rpS6\) gene and determination of its location at chromosome 9p21.](#)

Antoine M, Fried M.

Human Molecular Genetics 1992 Nov; 1(8):565.

- [Isolation and characterization of cloned cDNAs that code for human ribosomal protein S6.](#)

Lott JB, Mackie GA.

Gene 1988 May; 65(1):31.

- [The primary structure of the human ribosomal protein S6 derived from a cloned cDNA.](#)

Heinze H, Arnold HH, Fischer D, Kruppa J.

The Journal of Biological Chemistry 1988 Mar; 263(9):4139.

Application: WB-Ce, Human, HeLa cells

Pathway

- [Insulin signaling pathway](#)
- [mTOR signaling pathway](#)
- [Ribosome](#)