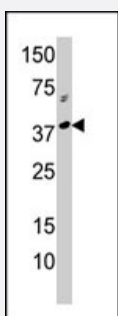


# RCL1 polyclonal antibody

Catalog # PAB3771

Size 400 uL

## Applications



### Western Blot (Cell lysate)

Western blot analysis of RCL1 polyclonal antibody (Cat # PAB3771) in A-375 cell line lysate (35 ug/lane). RCL1 (arrow) was detected using the purified polyclonal antibody (1:1000 dilution).

## Specification

<b>Product Description</b>	Rabbit polyclonal antibody raised against synthetic peptide of RCL1.
<b>Immunogen</b>	A synthetic peptide (conjugated with KLH) corresponding to N-terminus of human RCL1.
<b>Host</b>	Rabbit
<b>Reactivity</b>	Human
<b>Form</b>	Liquid
<b>Purification</b>	Protein G purification
<b>Recommend Usage</b>	Western Blot (1:1000) The optimal working dilution should be determined by the end user.
<b>Storage Buffer</b>	In PBS (0.09% sodium azide)
<b>Storage Instruction</b>	Store at 4°C. For long term storage store at -20°C. Aliquot to avoid repeated freezing and thawing.
<b>Note</b>	This product contains sodium azide: a POISONOUS AND HAZARDOUS SUBSTANCE which should be handled by trained staff only.

## Applications

- Western Blot (Cell lysate)

Western blot analysis of RCL1 polyclonal antibody (Cat # PAB3771) in A-375 cell line lysate (35 ug/lane). RCL1 (arrow) was detected using the purified polyclonal antibody (1:1000 dilution).

## Gene Info — RCL1

Entrez GeneID [10171](#)

Protein Accession# [NP\\_005763:Q9Y2P8](#)

Gene Name RCL1

Gene Alias RNAC, RPCL1

Gene Description RNA terminal phosphate cyclase-like 1

Omim ID [611405](#)

Gene Ontology [Hyperlink](#)

Other Designations 2310040A02Rik|OTTHUMP00000021017|RNA cyclase homolog

## Publication Reference

- [Rcl1p, the yeast protein similar to the RNA 3'-phosphate cyclase, associates with U3 snoRNP and is required for 18S rRNA biogenesis.](#)

Billy E, Wegierski T, Nasr F, Filipowicz W.

The EMBO Journal 2000 May; 19(9):2115.

Application: IF, WB-Ce, Yeast, GAL::rcl1 strain

- [The human RNA 3'-terminal phosphate cyclase is a member of a new family of proteins conserved in Eucarya, Bacteria and Archaea.](#)

Genschik P, Billy E, Swianiewicz M, Filipowicz W.

The EMBO Journal 1997 May; 16(10):2955.

## Disease

- [Tobacco Use Disorder](#)