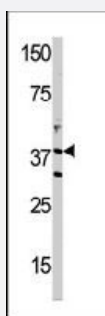


# DIMT1L polyclonal antibody

Catalog # PAB3765

Size 400 uL

## Applications



### Western Blot (Cell lysate)

Western blot analysis of DIMT1L polyclonal antibody (Cat # PAB3765) in T-47D cell line lysate (35 ug/lane). DIMT1 (arrow) was detected using the purified polyclonal antibody (1:1000 dilution).

## Specification

<b>Product Description</b>	Rabbit polyclonal antibody raised against synthetic peptide of DIMT1L.
<b>Immunogen</b>	A synthetic peptide (conjugated with KLH) corresponding to C-terminus of human DIMT1L.
<b>Host</b>	Rabbit
<b>Reactivity</b>	Human
<b>Form</b>	Liquid
<b>Purification</b>	Protein G purification
<b>Recommend Usage</b>	Western Blot (1:1000) The optimal working dilution should be determined by the end user.
<b>Storage Buffer</b>	In PBS (0.09% sodium azide)
<b>Storage Instruction</b>	Store at 4°C. For long term storage store at -20°C. Aliquot to avoid repeated freezing and thawing.
<b>Note</b>	This product contains sodium azide: a POISONOUS AND HAZARDOUS SUBSTANCE which should be handled by trained staff only.

## Applications

- Western Blot (Cell lysate)

Western blot analysis of DIMT1L polyclonal antibody (Cat # PAB3765) in T-47D cell line lysate (35 ug/lane). DIMT1 (arrow) was detected using the purified polyclonal antibody (1:1000 dilution).

## Gene Info — DIMT1L

**Entrez GeneID** [27292](#)

**Protein Accession#** [NP\\_055288;Q9UNQ2](#)

**Gene Name** DIMT1L

**Gene Alias** DIM1, DIMT1, HSA9761, HUSSY5

**Gene Description** DIM1 dimethyladenosine transferase 1-like (S. cerevisiae)

**Gene Ontology** [Hyperlink](#)

**Other Designations** dimethyladenosine transferase

## Publication Reference

- [Characterization of 16 novel human genes showing high similarity to yeast sequences.](#)

Stanchi F, Bertocco E, Toppo S, Dioguardi R, Simionati B, Cannata N, Zimbello R, Lanfranchi G, Valle G.  
Yeast 2001 Jan; 18(1):69.

## Disease

- [Disease Progression](#)
- [Disease Susceptibility](#)
- [HIV Infections](#)