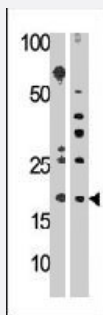


RPL23A polyclonal antibody

Catalog # PAB3755

Size 400 uL

Applications



Western Blot

Western blot analysis of RPL23A polyclonal antibody (Cat # PAB3755) in HepG2 (left) and mouse liver (right) cell line lysates (35 ug/lane). RPL23A (arrow) was detected using the purified polyclonal antibody (1:1000 dilution).

Specification

| | |
|----------------------------|--|
| Product Description | Rabbit polyclonal antibody raised against synthetic peptide of RPL23A. |
| Immunogen | A synthetic peptide (conjugated with KLH) corresponding to internal region of human RPL23A. |
| Host | Rabbit |
| Reactivity | Human, Mouse |
| Form | Liquid |
| Purification | Protein G purification |
| Recommend Usage | Western Blot (1:1000) The optimal working dilution should be determined by the end user. |
| Storage Buffer | In PBS (0.09% sodium azide) |
| Storage Instruction | Store at 4°C. For long term storage store at -20°C. Aliquot to avoid repeated freezing and thawing. |
| Note | This product contains sodium azide: a POISONOUS AND HAZARDOUS SUBSTANCE which should be handled by trained staff only. |

Applications

- Western Blot

Western blot analysis of RPL23A polyclonal antibody (Cat # PAB3755) in HepG2 (left) and mouse liver (right) cell line lysates (35 ug/lane). RPL23A (arrow) was detected using the purified polyclonal antibody (1:1000 dilution).

Gene Info — RPL23A

| | |
|--------------------|--|
| Entrez GeneID | 6147 |
| Protein Accession# | NP_000975;P62750 |
| Gene Name | RPL23A |
| Gene Alias | FLJ27455, MDA20 |
| Gene Description | ribosomal protein L23a |
| Omim ID | 602326 |
| Gene Ontology | Hyperlink |
| Other Designations | 60S ribosomal protein L23a melanoma differentiation-associated gene 20 |

Publication Reference

- [A complete map of the human ribosomal protein genes: assignment of 80 genes to the cytogenetic map and implications for human disorders.](#)

Uechi T, Tanaka T, Kenmochi N.

Genomics 2001 Mar; 72(3):223.

- [Cloning, sequencing, gene organization, and localization of the human ribosomal protein RPL23A gene.](#)

Fan W, Christensen M, Eichler E, Zhang X, Lennon G.

Genomics 1997 Dec; 46(2):234.

- [Suppression of human ribosomal protein L23A expression during cell growth inhibition by interferon-beta.](#)

Jiang H, Lin JJ, Tao J, Fisher PB.

Oncogene 1997 Jan; 14(4):473.

Pathway

- [Ribosome](#)