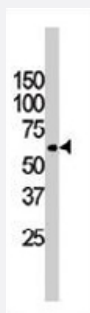


FUBP3 polyclonal antibody

Catalog # PAB3714

Size 400 uL

Applications



Western Blot (Cell lysate)

Western blot analysis of FUBP3 polyclonal antibody (Cat # PAB3714) in HepG2 cell line lysate (35 ug/lane). FUBP3 (arrow) was detected using the purified polyclonal antibody (1:1000 dilution).

Specification

Product Description	Rabbit polyclonal antibody raised against synthetic peptide of FUBP3.
Immunogen	A synthetic peptide (conjugated with KLH) corresponding to N-terminus of human FUBP3.
Host	Rabbit
Reactivity	Human
Form	Liquid
Purification	Protein G purification
Recommend Usage	Western Blot (1:1000) The optimal working dilution should be determined by the end user.
Storage Buffer	In PBS (0.09% sodium azide)
Storage Instruction	Store at 4°C. For long term storage store at -20°C. Aliquot to avoid repeated freezing and thawing.
Note	This product contains sodium azide: a POISONOUS AND HAZARDOUS SUBSTANCE which should be handled by trained staff only.

Applications

- Western Blot (Cell lysate)

Western blot analysis of FUBP3 polyclonal antibody (Cat # PAB3714) in HepG2 cell line lysate (35 ug/lane). FUBP3 (arrow) was detected using the purified polyclonal antibody (1:1000 dilution).

Gene Info — FUBP3

Entrez GeneID	8939
Protein Accession#	XP_001128545:Q96I24
Gene Name	FUBP3
Gene Alias	FBP3
Gene Description	far upstream element (FUSE) binding protein 3
Omim ID	603536
Gene Ontology	Hyperlink
Other Designations	OTTHUMP00000022369

Publication Reference

- [Nuclear targeting determinants of the far upstream element binding protein, a c-myc transcription factor.](#)

He L, Weber A, Levens D.

Nucleic Acids Research 2000 Nov; 28(22):4558.

- [The far upstream element-binding proteins comprise an ancient family of single-strand DNA-binding transactivators.](#)

Davis-Smyth T, Duncan RC, Zheng T, Michelotti G, Levens D.

The Journal of Biological Chemistry 1996 Dec; 271(49):31679.

Application: WB-Ce, WB-Re, Human, Mammalian cells, Recombinant proteins

Disease

- [Tobacco Use Disorder](#)