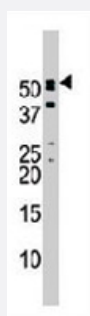


# NUP50 polyclonal antibody

Catalog # PAB3709

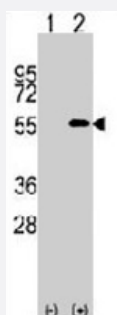
Size 400 uL

## Applications



### Western Blot (Tissue lysate)

Western blot analysis of NUP50 polyclonal antibody (Cat # PAB3709) in mouse brain tissue lysate. NUP50 (arrow) was detected using the purified polyclonal antibody.



### Western Blot (Transfected lysate)

Western blot analysis of NUP50 (arrow) using NUP50 polyclonal antibody (Cat # PAB3709). 293 cell lysates (2 ug/lane) either nontransfected (Lane 1) or transiently transfected with the NUP50 gene (Lane 2) (Origene Technologies).

## Specification

<b>Product Description</b>	Rabbit polyclonal antibody raised against synthetic peptide of NUP50.
<b>Immunogen</b>	A synthetic peptide (conjugated with KLH) corresponding to C-terminus of human NUP50.
<b>Host</b>	Rabbit
<b>Reactivity</b>	Human, Mouse
<b>Form</b>	Liquid
<b>Purification</b>	Ammonium sulfate precipitation

<b>Recommend Usage</b>	Western Blot (1:1000) The optimal working dilution should be determined by the end user.
<b>Storage Buffer</b>	In PBS (0.09% sodium azide)
<b>Storage Instruction</b>	Store at 4°C. For long term storage store at -20°C. Aliquot to avoid repeated freezing and thawing.
<b>Note</b>	This product contains sodium azide: a POISONOUS AND HAZARDOUS SUBSTANCE which should be handled by trained staff only.

## Applications

- Western Blot (Tissue lysate)

Western blot analysis of NUP50 polyclonal antibody (Cat # PAB3709) in mouse brain tissue lysate. NUP50 (arrow) was detected using the purified polyclonal antibody.

- Western Blot (Transfected lysate)

Western blot analysis of NUP50 (arrow) using NUP50 polyclonal antibody (Cat # PAB3709). 293 cell lysates (2 ug/lane) either nontransfected (Lane 1) or transiently transfected with the NUP50 gene (Lane 2) (Origene Technologies).

## Gene Info — NUP50

<b>Entrez GeneID</b>	<a href="#">10762</a>
<b>Protein Accession#</b>	<a href="#">NP_705931;Q8N6V5</a>
<b>Gene Name</b>	NUP50
<b>Gene Alias</b>	MGC39961, NPAP60, NPAP60L
<b>Gene Description</b>	nucleoporin 50kDa
<b>Omim ID</b>	<a href="#">604646</a>
<b>Gene Ontology</b>	<a href="#">Hyperlink</a>
<b>Gene Summary</b>	The nuclear pore complex is a massive structure that extends across the nuclear envelope, forming a gateway that regulates the flow of macromolecules between the nucleus and the cytoplasm. Nucleoporins are the main components of the nuclear pore complex in eukaryotic cells. The protein encoded by this gene is a member of the FG-repeat containing nucleoporins that functions as a soluble cofactor in importin- $\alpha$ : $\beta$ -mediated nuclear protein import. Pseudogenes of this gene are found on chromosomes 5, 6, and 14. Two transcript variants encoding different isoforms have been found for this gene. [provided by RefSeq]
<b>Other Designations</b>	OTTHUMP00000028685 nuclear pore-associated protein 60L

## Publication Reference

- [Nucleocytoplasmic transport: more than the usual suspects.](#)

Swaminathan S, Melchior F.

Developmental Cell 2002 Sep; 3(3):304.

- [Npap60/Nup50 is a tri-stable switch that stimulates importin-alpha:beta-mediated nuclear protein import.](#)

Lindsay ME, Plafker K, Smith AE, Clurman BE, Macara IG.

Cell 2002 Aug; 110(3):349.

Application: IF, Human, Mouse, GSN2, HeLa, NIH3T3 cells

- [Characterization and targeted disruption of murine Nup50, a p27\(Kip1\)-interacting component of the nuclear pore complex.](#)

Smitherman M, Lee K, Swanger J, Kapur R, Clurman BE.

Molecular and Cellular Biology 2000 Aug; 20(15):5631.

Application: IF, IP, WB-Ce, WB-Ti, WB-Tr, Human, Mouse, HeLa, NIH 3T3, 293 cells, MEFs, Embryo, Cerebrum, Cerebellum, Lungs, Heart, Kidney, Liver, Testes, Stomach

## Disease

- [Tobacco Use Disorder](#)