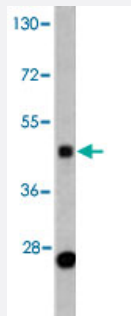


BMP15 polyclonal antibody

Catalog # PAB3669

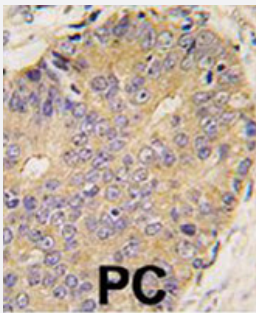
Size 400 uL

Applications



Western Blot (Cell lysate)

Western blot analysis of CEM cell lysate (35 ug/lane) with BMP15 polyclonal antibody (Cat # PAB3669).



Immunohistochemistry (Formalin/PFA-fixed paraffin-embedded sections)

Formalin-fixed and paraffin-embedded human prostate carcinoma tissue reacted with BMP15 polyclonal antibody (Cat # PAB3669), which was peroxidase-conjugated to the secondary antibody, followed by DAB staining. This data demonstrates the use of this antibody for immunohistochemistry ; clinical relevance has not been evaluated.

Specification

Product Description	Rabbit polyclonal antibody raised against synthetic peptide of BMP15.
Immunogen	A synthetic peptide (conjugated with KLH) corresponding to internal region of human BMP15.
Host	Rabbit
Reactivity	Human
Form	Liquid
Purification	Ammonium sulfate precipitation

Recommend Usage	Immunohistochemistry (Formalin/PFA-fixed paraffin-embedded sections) (1:10-50) Western Blot (1:1000) The optimal working dilution should be determined by the end user.
Storage Buffer	In PBS (0.09% sodium azide)
Storage Instruction	Store at 4°C. For long term storage store at -20°C. Aliquot to avoid repeated freezing and thawing.
Note	This product contains sodium azide: a POISONOUS AND HAZARDOUS SUBSTANCE which should be handled by trained staff only.

Applications

- Western Blot (Cell lysate)

Western blot analysis of CEM cell lysate (35 ug/lane) with BMP15 polyclonal antibody (Cat # PAB3669).

- Immunohistochemistry (Formalin/PFA-fixed paraffin-embedded sections)

Formalin-fixed and paraffin-embedded human prostate carcinoma tissue reacted with BMP15 polyclonal antibody (Cat # PAB3669), which was peroxidase-conjugated to the secondary antibody, followed by DAB staining. This data demonstrates the use of this antibody for immunohistochemistry; clinical relevance has not been evaluated.

Gene Info — BMP15

Entrez GeneID	9210
Protein Accession#	NP_005439
Gene Name	BMP15
Gene Alias	GDF9B, ODG2, POF4
Gene Description	bone morphogenetic protein 15
Omim ID	300247 300510
Gene Ontology	Hyperlink
Gene Summary	The protein encoded by this gene is a member of the bone morphogenetic protein family which is part of the transforming growth factor-beta superfamily. The transforming growth factor-beta superfamily includes large families of growth and differentiation factors. It is thought that this protein may be involved in oocyte maturation and follicular development as a homodimer or by forming heterodimers with a related protein, Gdf9. Defects in this gene are the cause of ovarian dysgenesis 2
Other Designations	OTTHUMP00000023297

Publication Reference

- [Effect of intracellular interactions on the processing and secretion of bone morphogenetic protein-15 \(BMP-15\) and growth and differentiation factor-9. Implication of the aberrant ovarian phenotype of BMP-15 mutant sheep.](#)

Liao WX, Moore RK, Otsuka F, Shimasaki S.

The Journal of Biological Chemistry 2003 Feb; 278(6):3713.

- [Mutations in an oocyte-derived growth factor gene \(BMP15\) cause increased ovulation rate and infertility in a dosage-sensitive manner.](#)

Galloway SM, McNatty KP, Cambridge LM, Laitinen MP, Juengel JL, Jokiranta TS, McLaren RJ, Luiro K, Dodds KG, Montgomery GW, Beattie AE, Davis GH, Ritvos O.

Nature Genetics 2000 Jul; 25(3):279.

Disease

- [Amenorrhea](#)
- [Anovulation](#)
- [Genetic Predisposition to Disease](#)
- [Iatrogenic Disease](#)
- [Infertility](#)
- [Obesity](#)
- [Ovarian Diseases](#)
- [Ovarian Failure](#)
- [Ovarian Hyperstimulation Syndrome](#)
- [Polycystic Ovary Syndrome](#)
- [Puberty](#)
- [Thrombophilia](#)
- [Tobacco Use Disorder](#)