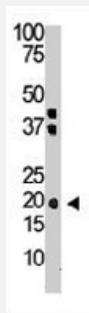


IL28A polyclonal antibody

Catalog # PAB3664

Size 400 uL

Applications



Western Blot (Tissue lysate)

The IL28A polyclonal antibody (Cat # PAB3664) is used in Western blot to detect IL28A in mouse brain tissue lysate.

Specification

Product Description	Rabbit polyclonal antibody raised against synthetic peptide of IL28A.
Immunogen	A synthetic peptide (conjugated with KLH) corresponding to internal region of human IL28A.
Host	Rabbit
Reactivity	Human, Mouse
Form	Liquid
Purification	Protein G purification
Recommend Usage	Western Blot (1:1000) The optimal working dilution should be determined by the end user.
Storage Buffer	In PBS (0.09% sodium azide)
Storage Instruction	Store at 4°C. For long term storage store at -20°C. Aliquot to avoid repeated freezing and thawing.
Note	This product contains sodium azide: a POISONOUS AND HAZARDOUS SUBSTANCE which should be handled by trained staff only.

Applications

- Western Blot (Tissue lysate)

The IL28A polyclonal antibody (Cat # PAB3664) is used in Western blot to detect IL28A in mouse brain tissue lysate.

Gene Info — IL28A

Entrez GeneID [282616](#)

Protein Accession# [NP_742150:Q8IZJ0](#)

Gene Name IL28A

Gene Alias IFNL2, IL-28A

Gene Description interleukin 28A (interferon, lambda 2)

Omim ID [607401](#)

Gene Ontology [Hyperlink](#)

Gene Summary This gene encodes a cytokine distantly related to type I interferons and the IL-10 family. This gene, interleukin 28B (IL28B), and interleukin 29 (IL29) are three closely related cytokine genes that form a cytokine gene cluster on a chromosomal region mapped to 19q13. Expression of the cytokines encoded by the three genes can be induced by viral infection. All three cytokines have been shown to interact with a heterodimeric class II cytokine receptor that consists of interleukin 10 receptor, beta (IL10RB) and interleukin 28 receptor, alpha (IL28RA). [provided by RefSeq]

Other Designations interferon lambda 2|interferon-lambda 2|interleukin 28A

Publication Reference

- [IFN-lambdas mediate antiviral protection through a distinct class II cytokine receptor complex.](#)

Kotenko SV, Gallagher G, Baurin VV, Lewis-Antes A, Shen M, Shah NK, Langer JA, Sheikh F, Dickensheets H, Donnelly RP. Nature Immunology 2003 Jan; 4(1):69.

- [IL-28, IL-29 and their class II cytokine receptor IL-28R.](#)

Sheppard P, Kindsvogel W, Xu W, Henderson K, Schlutsmeyer S, Whitmore TE, Kuestner R, Garrigues U, Birks C, Roraback J, Ostrander C, Dong D, Shin J, Presnell S, Fox B, Haldeman B, Cooper E, Taft D, Gilbert T, Grant FJ, Tackett M, Krivan W, McKnight G, Clegg C, Foster D, Klucher KM.

Nature Immunology 2003 Jan; 4(1):63.

Application: Func, Monkey, COS-7 cells

Pathway

- [Cytokine-cytokine receptor interaction](#)
- [Jak-STAT signaling pathway](#)

Disease

- [Hepatitis C](#)