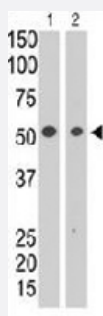


# SIGLEC7 polyclonal antibody

Catalog # PAB3650

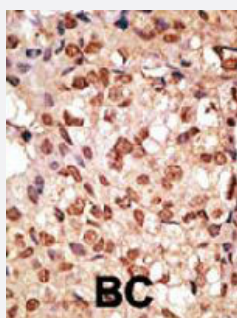
Size 400 uL

## Applications



### Western Blot

The SIGLEC7 polyclonal antibody (Cat # PAB3650) is used in Western blot to detect SIGLEC7 in HL-60 cell lysate (lane 1) and in mouse liver tissue lysate (lane 2) .



### Immunohistochemistry (Formalin/PFA-fixed paraffin-embedded sections)

Formalin-fixed and paraffin-embedded human cancer tissue reacted with SIGLEC7 polyclonal antibody (Cat # PAB3650) , which was peroxidase-conjugated to the secondary antibody, followed by DAB staining. This data demonstrates the use of this antibody for immunohistochemistry ; clinical relevance has not been evaluated. BC = breast carcinoma.

## Specification

<b>Product Description</b>	Rabbit polyclonal antibody raised against synthetic peptide of SIGLEC7.
<b>Immunogen</b>	A synthetic peptide (conjugated with KLH) corresponding to N-terminus of human SIGLEC7.
<b>Host</b>	Rabbit
<b>Reactivity</b>	Human
<b>Form</b>	Liquid
<b>Purification</b>	Protein G purification

<b>Recommend Usage</b>	Immunohistochemistry (Formalin/PFA-fixed paraffin-embedded sections) (1:50-100) Western Blot (1:1000) The optimal working dilution should be determined by the end user.
<b>Storage Buffer</b>	In PBS (0.09% sodium azide)
<b>Storage Instruction</b>	Store at 4°C. For long term storage store at -20°C. Aliquot to avoid repeated freezing and thawing.
<b>Note</b>	This product contains sodium azide: a POISONOUS AND HAZARDOUS SUBSTANCE which should be handled by trained staff only.

## Applications

- Western Blot

The SIGLEC7 polyclonal antibody (Cat # PAB3650) is used in Western blot to detect SIGLEC7 in HL-60 cell lysate (lane 1) and in mouse liver tissue lysate (lane 2) .

- Immunohistochemistry (Formalin/PFA-fixed paraffin-embedded sections)

Formalin-fixed and paraffin-embedded human cancer tissue reacted with SIGLEC7 polyclonal antibody (Cat # PAB3650) , which was peroxidase-conjugated to the secondary antibody, followed by DAB staining. This data demonstrates the use of this antibody for immunohistochemistry ; clinical relevance has not been evaluated. BC = breast carcinoma.

## Gene Info — SIGLEC7

<b>Entrez GeneID</b>	<a href="#">27036</a>
<b>Protein Accession#</b>	<a href="#">Q9NZQ1</a>
<b>Gene Name</b>	SIGLEC7
<b>Gene Alias</b>	AIRM1, CD328, CDw328, D-siglec, QA79, SIGLEC-7, p75, p75/AIRM1
<b>Gene Description</b>	sialic acid binding Ig-like lectin 7
<b>Omim ID</b>	<a href="#">604410</a>
<b>Gene Ontology</b>	<a href="#">Hyperlink</a>
<b>Gene Summary</b>	siglec-7 sialic acid binding immunoglobulin-like lectin 7
<b>Other Designations</b>	adhesion inhibitory receptor molecule 1, siglec-7 sialic acid binding immunoglobulin-like lectin 7

## Publication Reference

- [Ganglioside GD3 expression on target cells can modulate NK cell cytotoxicity via siglec-7-dependent and -independent mechanisms.](#)

Nicoll G, Avril T, Lock K, Furukawa K, Bovin N, Crocker PR.

European Journal of Immunology 2003 Jun; 33(6):1642.

- [High resolution crystal structures of Siglec-7. Insights into ligand specificity in the Siglec family.](#)

Alphey MS, Attrill H, Crocker PR, van Aalten DM.

The Journal of Biological Chemistry 2002 Nov; 278(5):3372.

- [Siglec-7: a sialic acid-binding lectin of the immunoglobulin superfamily.](#)

T Angata, A Varki.

Glycobiology 2000 Apr; 10(4):431.