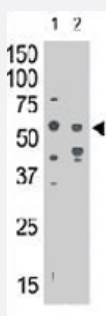


SIGLEC7 polyclonal antibody

Catalog # PAB3638

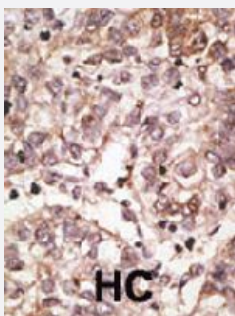
Size 400 uL

Applications



Western Blot

The SIGLEC7 polyclonal antibody (Cat # PAB3638) is used in Western blot to detect SIGLEC7 in mouse liver tissue lysate (lane 1) and in HL-60 cell lysate (lane 2) .



Immunohistochemistry (Formalin/PFA-fixed paraffin-embedded sections)

Formalin-fixed and paraffin-embedded human hepatocellular carcinoma tissue reacted with SIGLEC7 polyclonal antibody (Cat # PAB3638) , which was peroxidase-conjugated to the secondary antibody, followed by AEC staining. This data demonstrates the use of this antibody for immunohistochemistry ; clinical relevance has not been evaluated. HC = hepatocarcinoma.

Specification

Product Description	Rabbit polyclonal antibody raised against synthetic peptide of SIGLEC7.
Immunogen	A synthetic peptide (conjugated with KLH) corresponding to N-terminus of human SIGLEC7.
Host	Rabbit
Reactivity	Human, Mouse
Form	Liquid
Purification	Protein G purification

Recommend Usage	Immunohistochemistry (Formalin/PFA-fixed paraffin-embedded sections) (1:50-100) Western Blot (1:1000) The optimal working dilution should be determined by the end user.
Storage Buffer	In PBS (0.09% sodium azide)
Storage Instruction	Store at 4°C. For long term storage store at -20°C. Aliquot to avoid repeated freezing and thawing.
Note	This product contains sodium azide: a POISONOUS AND HAZARDOUS SUBSTANCE which should be handled by trained staff only.

Applications

- Western Blot

The SIGLEC7 polyclonal antibody (Cat # PAB3638) is used in Western blot to detect SIGLEC7 in mouse liver tissue lysate (lane 1) and in HL-60 cell lysate (lane 2) .

- Immunohistochemistry (Formalin/PFA-fixed paraffin-embedded sections)

Formalin-fixed and paraffin-embedded human hepatocellular carcinoma tissue reacted with SIGLEC7 polyclonal antibody (Cat # PAB3638) , which was peroxidase-conjugated to the secondary antibody, followed by AEC staining. This data demonstrates the use of this antibody for immunohistochemistry ; clinical relevance has not been evaluated. HC = hepatocarcinoma.

Gene Info — SIGLEC7

Entrez GeneID	27036
Protein Accession#	AAF12759
Gene Name	SIGLEC7
Gene Alias	AIRM1, CD328, CDw328, D-siglec, QA79, SIGLEC-7, p75, p75/AIRM1
Gene Description	sialic acid binding Ig-like lectin 7
Omim ID	604410
Gene Ontology	Hyperlink
Gene Summary	siglec-7 sialic acid binding immunoglobulin-like lectin 7
Other Designations	adhesion inhibitory receptor molecule 1, siglec-7 sialic acid binding immunoglobulin-like lectin 7

Publication Reference

- [Ganglioside GD3 expression on target cells can modulate NK cell cytotoxicity via siglec-7-dependent and -independent mechanisms.](#)

Nicoll G, Avril T, Lock K, Furukawa K, Bovin N, Crocker PR.

European Journal of Immunology 2003 Jun; 33(6):1642.

- [High resolution crystal structures of Siglec-7. Insights into ligand specificity in the Siglec family.](#)

Alphey MS, Attrill H, Crocker PR, van Aalten DM.

The Journal of Biological Chemistry 2002 Nov; 278(5):3372.

- [Siglec-7: a sialic acid-binding lectin of the immunoglobulin superfamily.](#)

T Angata, A Varki.

Glycobiology 2000 Apr; 10(4):431.

Application: Flow Cyt, IP, Monkey, OM VI-3 cells, Owl monkey 531H cells