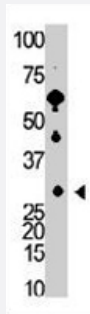


# RCVRN polyclonal antibody

Catalog # PAB3609

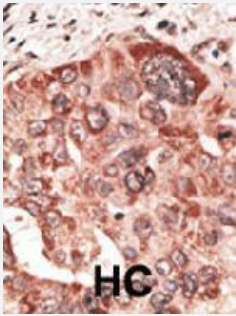
Size 400 uL

## Applications



### Western Blot (Cell lysate)

The RCVRN polyclonal antibody (Cat # PAB3609) is used in Western blot to detect Recoverin in Y-79 cell lysate.



### Immunohistochemistry (Formalin/PFA-fixed paraffin-embedded sections)

Formalin-fixed and paraffin-embedded human hepatocellular carcinoma tissue reacted with RCVRN polyclonal antibody (Cat # PAB3609), which was peroxidase-conjugated to the secondary antibody, followed by DAB staining. This data demonstrates the use of this antibody for immunohistochemistry; clinical relevance has not been evaluated. HC = hepatocarcinoma.

## Specification

Product Description	Rabbit polyclonal antibody raised against synthetic peptide of RCVRN.
Immunogen	A synthetic peptide (conjugated with KLH) corresponding to C-terminus of human RCVRN.
Host	Rabbit
Reactivity	Human
Form	Liquid
Purification	Protein G purification

<b>Recommend Usage</b>	Immunohistochemistry (Formalin/PFA-fixed paraffin-embedded sections) (1:50-100) Western Blot (1:1000) The optimal working dilution should be determined by the end user.
<b>Storage Buffer</b>	In PBS (0.09% sodium azide)
<b>Storage Instruction</b>	Store at 4°C. For long term storage store at -20°C. Aliquot to avoid repeated freezing and thawing.
<b>Note</b>	This product contains sodium azide: a POISONOUS AND HAZARDOUS SUBSTANCE which should be handled by trained staff only.

## Applications

- Western Blot (Cell lysate)

The RCVRN polyclonal antibody (Cat # PAB3609) is used in Western blot to detect Recoverin in Y-79 cell lysate.

- Immunohistochemistry (Formalin/PFA-fixed paraffin-embedded sections)

Formalin-fixed and paraffin-embedded human hepatocellular carcinoma tissue reacted with RCVRN polyclonal antibody (Cat # PAB3609), which was peroxidase-conjugated to the secondary antibody, followed by DAB staining. This data demonstrates the use of this antibody for immunohistochemistry; clinical relevance has not been evaluated. HC = hepatocarcinoma.

## Gene Info — RCVRN

<b>Entrez GeneID</b>	<a href="#">5957</a>
<b>Protein Accession#</b>	<a href="#">S43855</a>
<b>Gene Name</b>	RCVRN
<b>Gene Alias</b>	RCV1
<b>Gene Description</b>	recoverin
<b>Omim ID</b>	<a href="#">179618</a>
<b>Gene Ontology</b>	<a href="#">Hyperlink</a>
<b>Gene Summary</b>	This gene encodes a member of the recoverin family of neuronal calcium sensors. The encoded protein contains three calcium-binding EF-hand domains and may prolong the termination of the phototransduction cascade in the retina by blocking the phosphorylation of photo-activated rhodopsin. Recoverin may be the antigen responsible for cancer-associated retinopathy. [provided by RefSeq]
<b>Other Designations</b>	cancer associated retinopathy antigen

## Publication Reference

- [Functional analysis of the human recoverin gene promoter.](#)

Wiechmann A, Howard E.

Current Eye Research 2003 Jan; 26(1):25.

- [Expression of a photoreceptor protein, recoverin, as a cancer-associated retinopathy autoantigen in human lung cancer cell lines.](#)

Matsubara S, Yamaji Y, Sato M, Fujita J, Takahara J.

British Journal of Cancer 1996 Nov; 74(9):1419.

Application: WB-Ce, Human, MN-1112 cells, Recombinant proteins

- [Characterization of a small-cell-lung-carcinoma cell line from a patient with cancer-associated retinopathy.](#)

Yamaji Y, Matsubara S, Yamadori I, Sato M, Fujita T, Fujita J, Takahara J.

International Journal of Cancer 1996 Mar; 65(5):671.

Application: WB-Ce, Human, MN-1112, TK-130 cells