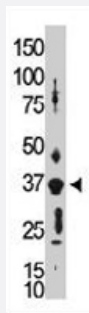


GJD2 polyclonal antibody

Catalog # PAB3597

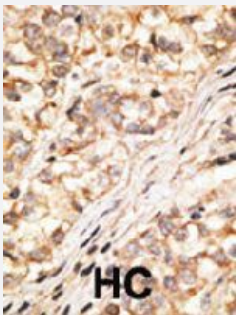
Size 400 uL

Applications



Western Blot (Tissue lysate)

The GJD2 polyclonal antibody (Cat # PAB3597) is used in Western blot to detect GJD2 in placenta tissue lysate.



Immunohistochemistry (Formalin/PFA-fixed paraffin-embedded sections)

Formalin-fixed and paraffin-embedded human hepatocellular carcinoma tissue reacted with GJD2 polyclonal antibody (Cat # PAB3597), which was peroxidase-conjugated to the secondary antibody, followed by DAB staining. This data demonstrates the use of this antibody for immunohistochemistry; clinical relevance has not been evaluated. HC = hepatocarcinoma.

Specification

Product Description	Rabbit polyclonal antibody raised against synthetic peptide of GJD2.
Immunogen	A synthetic peptide (conjugated with KLH) corresponding to C-terminus of human GJD2.
Host	Rabbit
Reactivity	Human
Form	Liquid
Purification	Protein G purification

Recommend Usage	Immunohistochemistry (Formalin/PFA-fixed paraffin-embedded sections) (1:50-100) Western Blot (1:2000) The optimal working dilution should be determined by the end user.
Storage Buffer	In PBS (0.09% sodium azide)
Storage Instruction	Store at 4°C. For long term storage store at -20°C. Aliquot to avoid repeated freezing and thawing.
Note	This product contains sodium azide: a POISONOUS AND HAZARDOUS SUBSTANCE which should be handled by trained staff only.

Applications

- Western Blot (Tissue lysate)

The GJD2 polyclonal antibody (Cat # PAB3597) is used in Western blot to detect GJD2 in placenta tissue lysate.

- Immunohistochemistry (Formalin/PFA-fixed paraffin-embedded sections)

Formalin-fixed and paraffin-embedded human hepatocellular carcinoma tissue reacted with GJD2 polyclonal antibody (Cat # PAB3597), which was peroxidase-conjugated to the secondary antibody, followed by DAB staining. This data demonstrates the use of this antibody for immunohistochemistry; clinical relevance has not been evaluated. HC = hepatocarcinoma.

Gene Info — GJD2

Entrez GeneID	57369
Protein Accession#	Q9UKL4
Gene Name	GJD2
Gene Alias	CX36, GJA9, MGC138315, MGC138319
Gene Description	gap junction protein, delta 2, 36kDa
Omim ID	607058
Gene Ontology	Hyperlink
Gene Summary	This gene is a member of the connexin gene family that is expressed predominantly in mammalian neurons. Connexins associate in groups of 6 and are organized radially around a central pore to form connexons. Each gap junction intercellular channel is formed by the conjunction of 2 connexons. [provided by RefSeq]
Other Designations	connexin 36 connexin-36 gap junction alpha-9 protein gap junction protein, alpha 9, 36kDa

Publication Reference

- [Mutations in the calcium-binding motifs of CDH23 and the 35delG mutation in GJB2 cause hearing loss in one family.](#)

de Brouwer AP, Pennings RJ, Roeters M, Van Hauwe P, Astuto LM, Hoefsloot LH, Huygen PL, van den Helm B, Deutman AF, Bork JM, Kimberling WJ, Cremers FP, Cremers CW, Kremer H.

Human Genetics 2003 Feb; 112(2):156.

- [Structure, chromosomal localization, and brain expression of human Cx36 gene.](#)

Belluardo N, Trovato-Salinaro A, Mudo G, Hurd YL, Condorelli DF.

Journal of Neuroscience Research 1999 Sep; 57(5):740.

Pathway

- [Gap junction](#)

Disease

- [Genetic Predisposition to Disease](#)
- [Myopia](#)