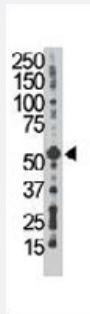


GJC1 polyclonal antibody

Catalog # PAB3593

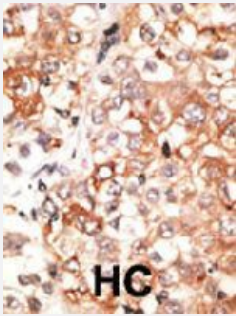
Size 400 uL

Applications



Western Blot (Cell lysate)

Western blot analysis of GJC1 polyclonal antibody (Cat # PAB3593) in A547 cell lysate. GJA7 (Arrow) was detected using purified polyclonal antibody. Secondary HRP-anti-rabbit was used for signal visualization with chemiluminescence.



Immunohistochemistry (Formalin/PFA-fixed paraffin-embedded sections)

Formalin-fixed and paraffin-embedded human hepatocellular carcinoma tissue reacted with GJC1 polyclonal antibody (Cat # PAB3593), which was peroxidase-conjugated to the secondary antibody, followed by DAB staining. This data demonstrates the use of this antibody for immunohistochemistry; clinical relevance has not been evaluated. HC = hepatocarcinoma.

Specification

Product Description	Rabbit polyclonal antibody raised against synthetic peptide of GJC1.
Immunogen	A synthetic peptide (conjugated with KLH) corresponding to N-terminus of human GJC1.
Host	Rabbit
Reactivity	Human
Form	Liquid
Purification	Protein G purification

Recommend Usage	Immunohistochemistry (Formalin/PFA-fixed paraffin-embedded sections) (1:50-100) Western Blot (1:1000) The optimal working dilution should be determined by the end user.
Storage Buffer	In PBS (0.09% sodium azide)
Storage Instruction	Store at 4°C. For long term storage store at -20°C. Aliquot to avoid repeated freezing and thawing.
Note	This product contains sodium azide: a POISONOUS AND HAZARDOUS SUBSTANCE which should be handled by trained staff only.

Applications

- Western Blot (Cell lysate)

Western blot analysis of GJC1 polyclonal antibody (Cat # PAB3593) in A547 cell lysate. GJA7 (Arrow) was detected using purified polyclonal antibody. Secondary HRP-anti-rabbit was used for signal visualization with chemiluminescence.

- Immunohistochemistry (Formalin/PFA-fixed paraffin-embedded sections)

Formalin-fixed and paraffin-embedded human hepatocellular carcinoma tissue reacted with GJC1 polyclonal antibody (Cat # PAB3593), which was peroxidase-conjugated to the secondary antibody, followed by DAB staining. This data demonstrates the use of this antibody for immunohistochemistry; clinical relevance has not been evaluated. HC = hepatocarcinoma.

Gene Info — GJC1

Entrez GeneID	10052
Protein Accession#	P36383
Gene Name	GJC1
Gene Alias	CX45, DKFZp686P0738, GJA7
Gene Description	gap junction protein, gamma 1, 45kDa
Omim ID	608655
Gene Ontology	Hyperlink
Gene Summary	This gene is a member of the connexin gene family. The encoded protein is a component of gap junctions, which are composed of arrays of intercellular channels that provide a route for the diffusion of low molecular weight materials from cell to cell. Alternatively spliced transcript variants encoding the same isoform have been described. [provided by RefSeq]
Other Designations	connexin 45 gap junction protein, alpha 7, 45kDa

Publication Reference

- [\[Expression of connexin43 and connexin45 in nasopharyngeal carcinoma\].](#)

Xiang Q, Fan SQ, Li J, Tan C, Xiang JJ, Zhang QH, Wang R, Li GY.

Ai Zheng 2002 Jun; 21(6).

- [Comparison of connexin 43, 40 and 45 expression patterns in the developing human and mouse hearts.](#)

Kaba RA, Coppen SR, Dupont E, Skepper JN, Elneil S, Haw MP, Pepper JR, Yacoub MH, Rothery S, Severs NJ.

Cell Adhesion and Communication 2001 Jan; 8(4-6):339.

Application: IF, IHC-Fr, Human, Mouse, Hearts

- [Molecular cloning of two human cardiac gap junction proteins, connexin40 and connexin45.](#)

Kanter HL, Saffitz JE, Beyer EC.

Journal of Molecular and Cellular Cardiology 1994 Jul; 26(7):861.

Application: IF, IHC-Fr, WB-Ti, Human, Human hearts

Disease

- [Cardiovascular Diseases](#)
- [Diabetes Mellitus](#)
- [Edema](#)