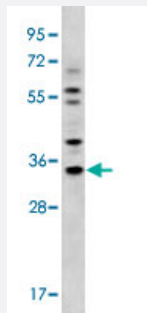


GJB5 polyclonal antibody

Catalog # PAB3590

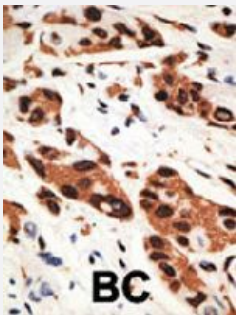
Size 400 uL

Applications



Western Blot (Cell lysate)

Western blot analysis of MDA-MB-231 cell lysate (35 ug/lane) with GJB5 polyclonal antibody (Cat # PAB3590).



Immunohistochemistry (Formalin/PFA-fixed paraffin-embedded sections)

Formalin-fixed and paraffin-embedded human cancer tissue reacted with GJB5 polyclonal antibody (Cat # PAB3590), which was peroxidase-conjugated to the secondary antibody, followed by AEC staining. This data demonstrates the use of this antibody for immunohistochemistry; clinical relevance has not been evaluated. BC = breast carcinoma.

Specification

Product Description	Rabbit polyclonal antibody raised against synthetic peptide of GJB5.
Immunogen	A synthetic peptide (conjugated with KLH) corresponding to internal region of human GJB5.
Host	Rabbit
Reactivity	Human
Form	Liquid
Purification	Protein G purification

Recommend Usage	Immunohistochemistry (Formalin/PFA-fixed paraffin-embedded sections) (1:50-100) Western Blot (1:1000) The optimal working dilution should be determined by the end user.
Storage Buffer	In PBS (0.09% sodium azide)
Storage Instruction	Store at 4°C. For long term storage store at -20°C. Aliquot to avoid repeated freezing and thawing.
Note	This product contains sodium azide: a POISONOUS AND HAZARDOUS SUBSTANCE which should be handled by trained staff only.

Applications

- Western Blot (Cell lysate)

Western blot analysis of MDA-MB-231 cell lysate (35 ug/lane) with GJB5 polyclonal antibody (Cat # PAB3590).

- Immunohistochemistry (Formalin/PFA-fixed paraffin-embedded sections)

Formalin-fixed and paraffin-embedded human cancer tissue reacted with GJB5 polyclonal antibody (Cat # PAB3590), which was peroxidase-conjugated to the secondary antibody, followed by AEC staining. This data demonstrates the use of this antibody for immunohistochemistry; clinical relevance has not been evaluated. BC = breast carcinoma.

Gene Info — GJB5

Entrez GeneID	2709
Protein Accession#	NP_005259;O95377
Gene Name	GJB5
Gene Alias	CX31.1
Gene Description	gap junction protein, beta 5, 31.1kDa
Omim ID	604493
Gene Ontology	Hyperlink
Gene Summary	Gap junctions are conduits that allow the direct cell-to-cell passage of small cytoplasmic molecules, including ions, metabolic intermediates, and second messengers, and thereby mediate intercellular metabolic and electrical communication. Gap junction channels consist of connexin protein subunits, which are encoded by a multigene family.[supplied by OMIM]
Other Designations	OTTHUMP00000004186 connexin 31.1 gap junction protein, beta 5 (connexin 31.1)

Publication Reference

- [Mutations in the human connexin gene GJB3 cause erythrokeratoderma variabilis.](#)

Richard G, Smith LE, Bailey RA, Itin P, Hohl D, Epstein EH Jr, DiGiovanna JJ, Compton JG, Bale SJ.

Nature Genetics 1998 Dec; 20(4):366.

Disease

- [Esophageal Neoplasms](#)
- [Genetic Predisposition to Disease](#)
- [Head and Neck Neoplasms](#)
- [Hearing Loss](#)
- [Laryngeal Neoplasms](#)
- [Mouth Neoplasms](#)
- [Pharyngeal Neoplasms](#)