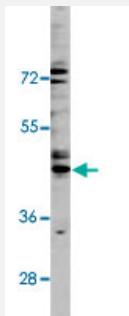


# GJA3 polyclonal antibody

Catalog # PAB3583

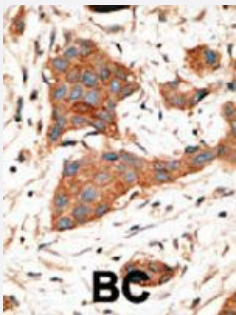
Size 400 uL

## Applications



### Western Blot (Cell lysate)

Western blot analysis of Jurkat cell lysate (35 ug/lane) with GJA3 polyclonal antibody (Cat # PAB3583).



### Immunohistochemistry (Formalin/PFA-fixed paraffin-embedded sections)

Formalin-fixed and paraffin-embedded human cancer tissue reacted with GJA3 polyclonal antibody (Cat # PAB3583), which was peroxidase-conjugated to the secondary antibody, followed by DAB staining. This data demonstrates the use of this antibody for immunohistochemistry; clinical relevance has not been evaluated. BC = breast carcinoma.

## Specification

<b>Product Description</b>	Rabbit polyclonal antibody raised against synthetic peptide of GJA3.
<b>Immunogen</b>	A synthetic peptide (conjugated with KLH) corresponding to N-terminus of human GJA3.
<b>Host</b>	Rabbit
<b>Reactivity</b>	Human
<b>Form</b>	Liquid
<b>Purification</b>	Protein G purification

<b>Recommend Usage</b>	Immunohistochemistry (Formalin/PFA-fixed paraffin-embedded sections) (1:50-100) Western Blot (1:1000) The optimal working dilution should be determined by the end user.
<b>Storage Buffer</b>	In PBS (0.09% sodium azide)
<b>Storage Instruction</b>	Store at 4°C. For long term storage store at -20°C. Aliquot to avoid repeated freezing and thawing.
<b>Note</b>	This product contains sodium azide: a POISONOUS AND HAZARDOUS SUBSTANCE which should be handled by trained staff only.

## Applications

- Western Blot (Cell lysate)

Western blot analysis of Jurkat cell lysate (35 ug/lane) with GJA3 polyclonal antibody (Cat # PAB3583).

- Immunohistochemistry (Formalin/PFA-fixed paraffin-embedded sections)

Formalin-fixed and paraffin-embedded human cancer tissue reacted with GJA3 polyclonal antibody (Cat # PAB3583), which was peroxidase-conjugated to the secondary antibody, followed by DAB staining. This data demonstrates the use of this antibody for immunohistochemistry; clinical relevance has not been evaluated. BC = breast carcinoma.

## Gene Info — GJA3

<b>Entrez GeneID</b>	<a href="#">2700</a>
<b>Protein Accession#</b>	<a href="#">NP_068773:Q9Y6H8</a>
<b>Gene Name</b>	GJA3
<b>Gene Alias</b>	CX46, CZP3
<b>Gene Description</b>	gap junction protein, alpha 3, 46kDa
<b>Omim ID</b>	<a href="#">121015 601885</a>
<b>Gene Ontology</b>	<a href="#">Hyperlink</a>
<b>Gene Summary</b>	alpha 3
<b>Other Designations</b>	connexin 46

## Publication Reference

- [Connexin46 mutations in autosomal dominant congenital cataract.](#)

Mackay D, Ionides A, Kibar Z, Rouleau G, Berry V, Moore A, Shiels A, Bhattacharya S.

American Journal of Human Genetics 1999 May; 64(5):1357.