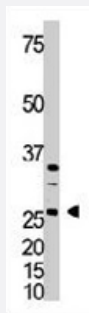


# DKK4 polyclonal antibody

Catalog # PAB3574

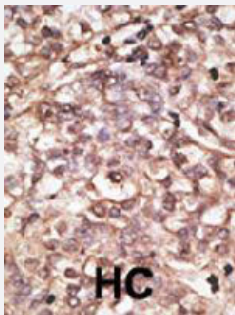
Size 400 uL

## Applications



### Western Blot (Cell lysate)

The DKK4 polyclonal antibody (Cat # PAB3574) is used in Western blot to detect DKK4 in A-375 cell lysate.



### Immunohistochemistry (Formalin/PFA-fixed paraffin-embedded sections)

Formalin-fixed and paraffin-embedded human hepatocellular carcinoma tissue reacted with DKK4 polyclonal antibody (Cat # PAB3574), which was peroxidase-conjugated to the secondary antibody, followed by DAB staining. This data demonstrates the use of this antibody for immunohistochemistry; clinical relevance has not been evaluated. HC = hepatocarcinoma.

## Specification

<b>Product Description</b>	Rabbit polyclonal antibody raised against synthetic peptide of DKK4.
<b>Immunogen</b>	A synthetic peptide (conjugated with KLH) corresponding to C-terminus of human DKK4.
<b>Host</b>	Rabbit
<b>Reactivity</b>	Human
<b>Form</b>	Liquid
<b>Purification</b>	Protein G purification

<b>Recommend Usage</b>	Immunohistochemistry (Formalin/PFA-fixed paraffin-embedded sections) (1:50-100) Western Blot (1:1000) The optimal working dilution should be determined by the end user.
<b>Storage Buffer</b>	In PBS (0.09% sodium azide)
<b>Storage Instruction</b>	Store at 4°C. For long term storage store at -20°C. Aliquot to avoid repeated freezing and thawing.
<b>Note</b>	This product contains sodium azide: a POISONOUS AND HAZARDOUS SUBSTANCE which should be handled by trained staff only.

## Applications

- Western Blot (Cell lysate)

The DKK4 polyclonal antibody (Cat # PAB3574) is used in Western blot to detect DKK4 in A-375 cell lysate.

- Immunohistochemistry (Formalin/PFA-fixed paraffin-embedded sections)

Formalin-fixed and paraffin-embedded human hepatocellular carcinoma tissue reacted with DKK4 polyclonal antibody (Cat # PAB3574), which was peroxidase-conjugated to the secondary antibody, followed by DAB staining. This data demonstrates the use of this antibody for immunohistochemistry; clinical relevance has not been evaluated. HC = hepatocarcinoma.

## Gene Info — DKK4

<b>Entrez GeneID</b>	<a href="#">27121</a>
<b>Protein Accession#</b>	<a href="#">NP_055235</a>
<b>Gene Name</b>	DKK4
<b>Gene Alias</b>	DKK-4, MGC129562, MGC129563
<b>Gene Description</b>	dickkopf homolog 4 (Xenopus laevis)
<b>Omim ID</b>	<a href="#">605417</a>
<b>Gene Ontology</b>	<a href="#">Hyperlink</a>
<b>Gene Summary</b>	This gene encodes a protein that is a member of the dickkopf family. The secreted protein contains two cysteine rich regions and is involved in embryonic development through its interactions with the Wnt signaling pathway. Activity of this protein is modulated by binding to the Wnt co-receptor and the co-factor kremen 2. [provided by RefSeq]
<b>Other Designations</b>	dickkopf homolog 4

## Publication Reference

- [Assignment of the human dickkopf \(Xenopus\) homolog 4 \(DKK4\) to chromosome 8p11.2-->p11.1 by fluorescence in situ hybridization.](#)

Yoshida S, Satoh H, Mitsuya T, Tate G.

Cytogenetics and Cell Genetics 2001 Jan; 94(1-2):88.

- [Functional and structural diversity of the human Dickkopf gene family.](#)

Krupnik VE, Sharp JD, Jiang C, Robison K, Chickering TW, Amaravadi L, Brown DE, Guyot D, Mays G, Leiby K, Chang B, Duong T, Goodearl AD, Gearing DP, Sokol SY, McCarthy SA.

Gene 1999 Oct; 238(2):301.

## Pathway

- [Wnt signaling pathway](#)

## Disease

- [Carcinoma](#)
- [Genetic Predisposition to Disease](#)
- [Hematologic Diseases](#)
- [Kidney Neoplasms](#)
- [Occupational Diseases](#)
- [Schizophrenia](#)