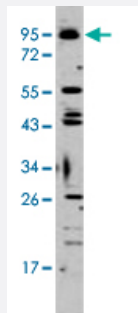


Tlr6 polyclonal antibody

Catalog # PAB3555

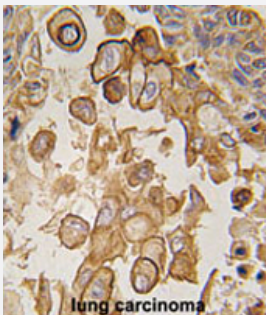
Size 400 uL

Applications



Western Blot (Cell lysate)

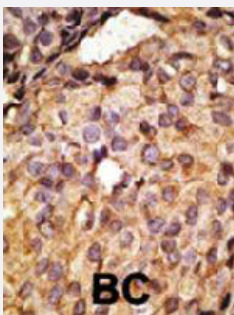
Western blot analysis of K-562 cell lysate (35 ug/lane) with Tlr6 polyclonal antibody (Cat # PAB3555).



Immunohistochemistry (Formalin/PFA-fixed paraffin-embedded sections)

Formalin-fixed and paraffin-embedded human lung carcinoma reacted with Tlr6 polyclonal antibody (Cat # PAB3555), which was peroxidase-conjugated to the secondary antibody, followed by AEC staining.

This data demonstrates the use of this antibody for immunohistochemistry; clinical relevance has not been evaluated.



Immunohistochemistry (Formalin/PFA-fixed paraffin-embedded sections)

Formalin-fixed and paraffin-embedded human cancer tissue reacted with Tlr6 polyclonal antibody (Cat # PAB3555), which was peroxidase-conjugated to the secondary antibody, followed by AEC staining. This data demonstrates the use of this antibody for immunohistochemistry; clinical relevance has not been evaluated. BC = breast carcinoma.

Specification

Product Description

Rabbit polyclonal antibody raised against synthetic peptide of Tlr6.

Immunogen

A synthetic peptide (conjugated with KLH) corresponding to C-terminus of mouse Tlr6.

Host	Rabbit
Reactivity	Human, Mouse
Form	Liquid
Purification	Protein G purification
Recommend Usage	Immunohistochemistry (Formalin/PFA-fixed paraffin-embedded sections) (1:50-100) Western Blot (1:1000) The optimal working dilution should be determined by the end user.
Storage Buffer	In PBS (0.09% sodium azide)
Storage Instruction	Store at 4°C. For long term storage store at -20°C. Aliquot to avoid repeated freezing and thawing.
Note	This product contains sodium azide: a POISONOUS AND HAZARDOUS SUBSTANCE which should be handled by trained staff only.

Applications

- Western Blot (Cell lysate)

Western blot analysis of K-562 cell lysate (35 ug/lane) with Tlr6 polyclonal antibody (Cat # PAB3555).

- Immunohistochemistry (Formalin/PFA-fixed paraffin-embedded sections)

Formalin-fixed and paraffin-embedded human lung carcinoma reacted with Tlr6 polyclonal antibody (Cat # PAB3555), which was peroxidase-conjugated to the secondary antibody, followed by AEC staining.

This data demonstrates the use of this antibody for immunohistochemistry; clinical relevance has not been evaluated.

- Immunohistochemistry (Formalin/PFA-fixed paraffin-embedded sections)

Formalin-fixed and paraffin-embedded human cancer tissue reacted with Tlr6 polyclonal antibody (Cat # PAB3555), which was peroxidase-conjugated to the secondary antibody, followed by AEC staining. This data demonstrates the use of this antibody for immunohistochemistry; clinical relevance has not been evaluated. BC = breast carcinoma.

Gene Info — Tlr6

Entrez GeneID	21899
Protein Accession#	Q9EPW9
Gene Name	Tlr6
Gene Alias	-

Gene Description	toll-like receptor 6
------------------	----------------------

Gene Ontology	Hyperlink
---------------	---------------------------

Other Designations	-
--------------------	---

Publication Reference

- [The repertoire for pattern recognition of pathogens by the innate immune system is defined by cooperation between toll-like receptors.](#)

Ozinsky A, Underhill DM, Fontenot JD, Hajjar AM, Smith KD, Wilson CB, Schroeder L, Aderem A.

PNAS 2000 Dec; 97(25):13766.

- [TLR6: A novel member of an expanding toll-like receptor family.](#)

Takeuchi O, Kawai T, Sanjo H, Copeland NG, Gilbert DJ, Jenkins NA, Takeda K, Akira S.

Gene 1999 Apr; 231(1-2):59.