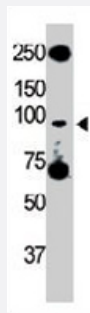


# Tlr5 polyclonal antibody

Catalog # PAB3552

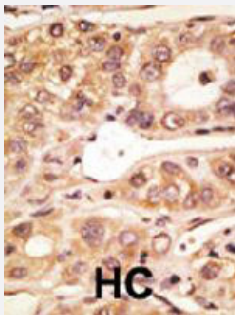
Size 400 uL

## Applications



### Western Blot (Cell lysate)

The Tlr5 polyclonal antibody (Cat # PAB3552) is used in Western blot to detect TLR5 in HL-60 cell lysate.



### Immunohistochemistry (Formalin/PFA-fixed paraffin-embedded sections)

Formalin-fixed and paraffin-embedded human hepatocellular carcinoma tissue reacted with Tlr5 polyclonal antibody (Cat # PAB3552), which was peroxidase-conjugated to the secondary antibody, followed by AEC staining. This data demonstrates the use of this antibody for immunohistochemistry; clinical relevance has not been evaluated. HC = hepatocarcinoma.

## Specification

<b>Product Description</b>	Rabbit polyclonal antibody raised against synthetic peptide of Tlr5.
<b>Immunogen</b>	A synthetic peptide (conjugated with KLH) corresponding to C-terminus of mouse Tlr5.
<b>Host</b>	Rabbit
<b>Reactivity</b>	Mouse
<b>Form</b>	Liquid
<b>Purification</b>	Protein G purification

<b>Recommend Usage</b>	Immunohistochemistry (Formalin/PFA-fixed paraffin-embedded sections) (1:50-100) Western Blot (1:1000) The optimal working dilution should be determined by the end user.
<b>Storage Buffer</b>	In PBS (0.09% sodium azide)
<b>Storage Instruction</b>	Store at 4°C. For long term storage store at -20°C. Aliquot to avoid repeated freezing and thawing.
<b>Note</b>	This product contains sodium azide: a POISONOUS AND HAZARDOUS SUBSTANCE which should be handled by trained staff only.

## Applications

- Western Blot (Cell lysate)

The Tlr5 polyclonal antibody (Cat # PAB3552) is used in Western blot to detect TLR5 in HL-60 cell lysate.

- Immunohistochemistry (Formalin/PFA-fixed paraffin-embedded sections)

Formalin-fixed and paraffin-embedded human hepatocellular carcinoma tissue reacted with Tlr5 polyclonal antibody (Cat # PAB3552), which was peroxidase-conjugated to the secondary antibody, followed by AEC staining. This data demonstrates the use of this antibody for immunohistochemistry; clinical relevance has not been evaluated. HC = hepatocarcinoma.

## Gene Info — Tlr5

<b>Entrez GeneID</b>	<a href="#">53791</a>
<b>Protein Accession#</b>	<a href="#">Q9JLF7</a>
<b>Gene Name</b>	Tlr5
<b>Gene Alias</b>	-
<b>Gene Description</b>	toll-like receptor 5
<b>Gene Ontology</b>	<a href="#">Hyperlink</a>
<b>Other Designations</b>	-

## Publication Reference

- [Cloning and characterization of the murine toll-like receptor 5 \(Tlr5\) gene: sequence and mRNA expression studies in Salmonella-susceptible MOLF/Ei mice.](#)

Sebastiani G, Leveque G, Lariviere L, Laroche L, Skamene E, Gros P, Malo D.

Genomics 2000 Mar; 64(3):230.