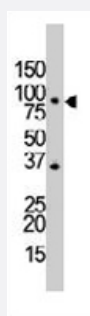


Tlr4 polyclonal antibody

Catalog # PAB3549

Size 400 uL

Applications



Western Blot (Tissue lysate)

Western blot analysis of Tlr4 polyclonal antibody (Cat # PAB3549) in mouse spleen tissue lysate. Tlr4 (arrow) was detected using purified polyclonal antibody. Secondary HRP-anti-rabbit was used for signal visualization with chemiluminescence.

Specification

Product Description	Rabbit polyclonal antibody raised against synthetic peptide of Tlr4.
Immunogen	A synthetic peptide (conjugated with KLH) corresponding to N-terminus of mouse Tlr4.
Host	Rabbit
Reactivity	Mouse
Form	Liquid
Purification	Protein G purification
Recommend Usage	Western Blot (1:1000) The optimal working dilution should be determined by the end user.
Storage Buffer	In PBS (0.09% sodium azide)
Storage Instruction	Store at 4°C. For long term storage store at -20°C. Aliquot to avoid repeated freezing and thawing.
Note	This product contains sodium azide: a POISONOUS AND HAZARDOUS SUBSTANCE which should be handled by trained staff only.

Applications

- Western Blot (Tissue lysate)

Western blot analysis of Tlr4 polyclonal antibody (Cat # PAB3549) in mouse spleen tissue lysate. Tlr4 (arrow) was detected using purified polyclonal antibody. Secondary HRP-anti-rabbit was used for signal visualization with chemiluminescence.

- Immunohistochemistry

Gene Info — Tlr4

Entrez GeneID	21898
---------------	-----------------------

Protein Accession#	Q9QUK6
--------------------	------------------------

Gene Name	Tlr4
-----------	------

Gene Alias	Lps, Ly87, Ran/M1, Rasl2-8
------------	----------------------------

Gene Description	toll-like receptor 4
------------------	----------------------

Gene Ontology	Hyperlink
---------------	---------------------------

Other Designations	OTTMUSP00000000296 lipopolysaccharide response
--------------------	--