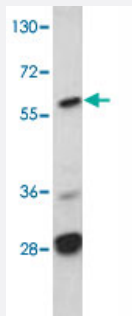


ARAF polyclonal antibody

Catalog # PAB3478

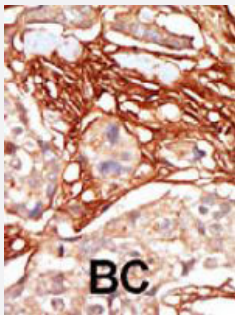
Size 400 uL

Applications



Western Blot (Cell lysate)

Western blot analysis of MCF-7 cell lysate (35 ug/lane) with ARAF polyclonal antibody (Cat # PAB3478).



Immunohistochemistry (Formalin/PFA-fixed paraffin-embedded sections)

Formalin-fixed and paraffin-embedded human cancer tissue reacted with ARAF polyclonal antibody (Cat # PAB3478) , which was peroxidase-conjugated to the secondary antibody, followed by AEC staining. This data demonstrates the use of this antibody for immunohistochemistry ; clinical relevance has not been evaluated. BC = breast carcinoma.

Specification

Product Description	Rabbit polyclonal antibody raised against synthetic peptide of ARAF.
Immunogen	A synthetic peptide (conjugated with KLH) corresponding to internal region of human ARAF.
Host	Rabbit
Reactivity	Human
Form	Liquid
Purification	Protein G purification

Recommend Usage	Immunohistochemistry (Formalin/PFA-fixed paraffin-embedded sections) (1:50-100) Western Blot (1:1000) The optimal working dilution should be determined by the end user.
Storage Buffer	In PBS (0.09% sodium azide)
Storage Instruction	Store at 4°C. For long term storage store at -20°C. Aliquot to avoid repeated freezing and thawing.
Note	This product contains sodium azide: a POISONOUS AND HAZARDOUS SUBSTANCE which should be handled by trained staff only.

Applications

- Western Blot (Cell lysate)

Western blot analysis of MCF-7 cell lysate (35 ug/lane) with ARAF polyclonal antibody (Cat # PAB3478).

- Immunohistochemistry (Formalin/PFA-fixed paraffin-embedded sections)

Formalin-fixed and paraffin-embedded human cancer tissue reacted with ARAF polyclonal antibody (Cat # PAB3478), which was peroxidase-conjugated to the secondary antibody, followed by AEC staining. This data demonstrates the use of this antibody for immunohistochemistry; clinical relevance has not been evaluated. BC = breast carcinoma.

Gene Info — ARAF

Entrez GeneID	369
Protein Accession#	P10398
Gene Name	ARAF
Gene Alias	A-RAF, ARAF1, PKS2, RAFA1
Gene Description	v-raf murine sarcoma 3611 viral oncogene homolog
Omim ID	311010
Gene Ontology	Hyperlink
Other Designations	OTTHUMP00000023212 Oncogene ARAF1 Ras-binding protein DA-Raf v-raf murine sarcoma 3611 viral oncogene homolog 1

Publication Reference

- [Selective activation of MEK1 but not MEK2 by A-Raf from epidermal growth factor-stimulated Hela cells.](#)

Wu X, Noh SJ, Zhou G, Dixon JE, Guan KL.

The Journal of Biological Chemistry 1996 Feb; 271(6):3265.

Application: IP-WB, Human, HeLa cells

- [The complete sequence and promoter activity of the human A-raf-1 gene \(ARAF1\).](#)

Lee JE, Beck TW, Brennscheidt U, DeGennaro LJ, Rapp UR.

Genomics 1994 Mar; 20(1):43.

Pathway

- [Acute myeloid leukemia](#)
- [Bladder cancer](#)
- [Chronic myeloid leukemia](#)
- [Colorectal cancer](#)
- [Endometrial cancer](#)
- [ErbB signaling pathway](#)
- [Glioma](#)
- [Insulin signaling pathway](#)
- [Long-term depression](#)
- [Long-term potentiation](#)
- [Melanoma](#)
- [Natural killer cell mediated cytotoxicity](#)
- [Non-small cell lung cancer](#)
- [Pancreatic cancer](#)
- [Pathways in cancer](#)
- [Prostate cancer](#)
- [Regulation of actin cytoskeleton](#)

- [Renal cell carcinoma](#)
- [Vascular smooth muscle contraction](#)