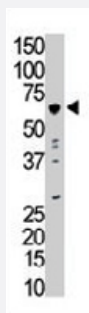


SRMS polyclonal antibody

Catalog # PAB3436

Size 400 uL

Applications



Western Blot (Cell lysate)

Western blot analysis of SRMS polyclonal antibody (Cat # PAB3436) in HL-60 cell lysate. SRMS (arrow) was detected using purified polyclonal antibody. Secondary HRP-anti-rabbit was used for signal visualization with chemiluminescence.

Specification

Product Description	Rabbit polyclonal antibody raised against synthetic peptide of SRMS.
Immunogen	A synthetic peptide (conjugated with KLH) corresponding to N-terminus of human SRMS.
Host	Rabbit
Reactivity	Human
Form	Liquid
Purification	Protein G purification
Recommend Usage	Immunohistochemistry (Formalin/PFA-fixed paraffin-embedded sections) (1:50-100) Western Blot (1:1000) The optimal working dilution should be determined by the end user.
Storage Buffer	In PBS (0.09% sodium azide)
Storage Instruction	Store at 4°C. For long term storage store at -20°C. Aliquot to avoid repeated freezing and thawing.
Note	This product contains sodium azide: a POISONOUS AND HAZARDOUS SUBSTANCE which should be handled by trained staff only.

Applications

- Western Blot (Cell lysate)

Western blot analysis of SRMS polyclonal antibody (Cat # PAB3436) in HL-60 cell lysate. SRMS (arrow) was detected using purified polyclonal antibody. Secondary HRP-anti-rabbit was used for signal visualization with chemiluminescence.

- Immunohistochemistry (Formalin/PFA-fixed paraffin-embedded sections)

Gene Info — SRMS

Entrez GeneID	6725
Protein Accession#	Q9H3Y6
Gene Name	SRMS
Gene Alias	C20orf148, SRM, dJ697K14.1
Gene Description	src-related kinase lacking C-terminal regulatory tyrosine and N-terminal myristylation sites
Gene Ontology	Hyperlink
Other Designations	OTTHUMP00000031561

Publication Reference

- [A novel nonreceptor tyrosine kinase, Srm: cloning and targeted disruption.](#)

Kohmura N, Yagi T, Tomooka Y, Oyanagi M, Kominami R, Takeda N, Chiba J, Ikawa Y, Aizawa S.
Molecular and Cellular Biology 1994 Oct; 14(10):6915.