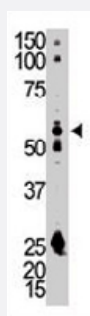


SRC polyclonal antibody

Catalog # PAB3435

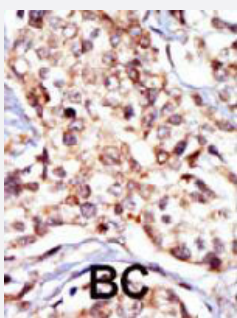
Size 400 uL

Applications



Western Blot (Tissue lysate)

Western blot analysis of SRC polyclonal antibody (Cat # PAB3435) in mouse kidney tissue lysate. SRC (arrow) was detected using purified polyclonal antibody. Secondary HRP-anti-rabbit was used for signal visualization with chemiluminescence.



Immunohistochemistry (Formalin/PFA-fixed paraffin-embedded sections)

Formalin-fixed and paraffin-embedded human cancer tissue reacted with SRC polyclonal antibody (Cat # PAB3435), which was peroxidase-conjugated to the secondary antibody, followed by DAB staining. This data demonstrates the use of this antibody for immunohistochemistry; clinical relevance has not been evaluated. BC = breast carcinoma.

Specification

Product Description	Rabbit polyclonal antibody raised against synthetic peptide of SRC.
Immunogen	A synthetic peptide (conjugated with KLH) corresponding to N-terminus of human SRC.
Host	Rabbit
Reactivity	Human, Mouse
Form	Liquid
Purification	Protein G purification

Recommend Usage	Immunofluorescence (1:10-50) Immunohistochemistry (Formalin/PFA-fixed paraffin-embedded sections) (1:50-100) Western Blot (1:1000) The optimal working dilution should be determined by the end user.
Storage Buffer	In PBS (0.09% sodium azide)
Storage Instruction	Store at 4°C. For long term storage store at -20°C. Aliquot to avoid repeated freezing and thawing.
Note	This product contains sodium azide: a POISONOUS AND HAZARDOUS SUBSTANCE which should be handled by trained staff only.

Applications

- Western Blot (Tissue lysate)

Western blot analysis of SRC polyclonal antibody (Cat # PAB3435) in mouse kidney tissue lysate. SRC (arrow) was detected using purified polyclonal antibody. Secondary HRP-anti-rabbit was used for signal visualization with chemiluminescence.

- Immunohistochemistry (Formalin/PFA-fixed paraffin-embedded sections)

Formalin-fixed and paraffin-embedded human cancer tissue reacted with SRC polyclonal antibody (Cat # PAB3435), which was peroxidase-conjugated to the secondary antibody, followed by DAB staining. This data demonstrates the use of this antibody for immunohistochemistry; clinical relevance has not been evaluated. BC = breast carcinoma.

- Immunofluorescence

Gene Info — SRC

Entrez GeneID	6714
Protein Accession#	P12931
Gene Name	SRC
Gene Alias	ASV, SRC1, c-SRC, p60-Src
Gene Description	v-src sarcoma (Schmidt-Ruppin A-2) viral oncogene homolog (avian)
Omim ID	190090
Gene Ontology	Hyperlink

Gene Summary

This gene is highly similar to the v-src gene of Rous sarcoma virus. This proto-oncogene may play a role in the regulation of embryonic development and cell growth. The protein encoded by this gene is a tyrosine-protein kinase whose activity can be inhibited by phosphorylation by c-SRC kinase. Mutations in this gene could be involved in the malignant progression of colon cancer. Two transcript variants encoding the same protein have been found for this gene. [provided by RefSeq]

Other Designations

OTTHUMP00000174476|OTTHUMP00000174477|proto-oncogene tyrosine-protein kinase SRC|protooncogene SRC, Rous sarcoma|tyrosine kinase pp60c-src|tyrosine-protein kinase SRC-1

Publication Reference

- [Coexpression of IGF-1R and c-Src proteins in human pancreatic ductal adenocarcinoma.](#)

Hakam A, Fang Q, Karl R, Coppola D.

Digestive Diseases and Sciences 2003 Oct; 48(10):1972.

Application: IHC-P, Human, Pancreatic ductal adenocarcinomas

- [An increase in the expression and total activity of endogenous p60\(c-Src\) in several factor-independent mutants of a human GM-CSF-dependent leukemia cell line \(TF-1\).](#)

Horn S, Meyer J, Stocking C, Ostertag W, Jucker M.

Oncogene 2003 Oct; 22(46):7170.

- [v-SRC specifically regulates the nucleo-cytoplasmic delocalization of the major isoform of TEL \(ETV6\).](#)

Lopez RG, Carron C, Ghysdael J.

The Journal of Biological Chemistry 2003 Oct; 278(42):41316.

Application: IF, Human, HeLa cells

Pathway

- [Adherens junction](#)
- [Endocytosis](#)
- [Epithelial cell signaling in Helicobacter pylori infection](#)
- [ErbB signaling pathway](#)
- [Focal adhesion](#)
- [Gap junction](#)
- [GnRH signaling pathway](#)

- [Tight junction](#)
- [VEGF signaling pathway](#)

Disease

- [Genetic Predisposition to Disease](#)
- [HIV Infections](#)
- [Thyroid Neoplasms](#)