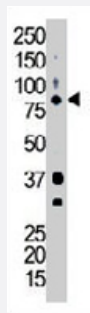


BMX polyclonal antibody

Catalog # PAB3418

Size 400 uL

Applications



Western Blot (Tissue lysate)

The BMX polyclonal antibody (Cat # PAB3418) is used in Western blot to detect BMX in mouse heart tissue lysate.



Immunohistochemistry (Formalin/PFA-fixed paraffin-embedded sections)

Formalin-fixed and paraffin-embedded human hepatocellular carcinoma tissue reacted with BMX polyclonal antibody (Cat # PAB3418), which was peroxidase-conjugated to the secondary antibody, followed by AEC staining. This data demonstrates the use of this antibody for immunohistochemistry; clinical relevance has not been evaluated. HC = hepatocarcinoma.

Specification

Product Description	Rabbit polyclonal antibody raised against synthetic peptide of BMX.
Immunogen	A synthetic peptide (conjugated with KLH) corresponding to internal region of human BMX.
Host	Rabbit
Reactivity	Human, Mouse
Form	Liquid
Purification	Protein G purification

Recommend Usage	Immunohistochemistry (Formalin/PFA-fixed paraffin-embedded sections) (1:50-100) Western Blot (1:1000) The optimal working dilution should be determined by the end user.
Storage Buffer	In PBS (0.09% sodium azide)
Storage Instruction	Store at 4°C. For long term storage store at -20°C. Aliquot to avoid repeated freezing and thawing.
Note	This product contains sodium azide: a POISONOUS AND HAZARDOUS SUBSTANCE which should be handled by trained staff only.

Applications

- Western Blot (Tissue lysate)

The BMX polyclonal antibody (Cat # PAB3418) is used in Western blot to detect BMX in mouse heart tissue lysate.

- Immunohistochemistry (Formalin/PFA-fixed paraffin-embedded sections)

Formalin-fixed and paraffin-embedded human hepatocellular carcinoma tissue reacted with BMX polyclonal antibody (Cat # PAB3418), which was peroxidase-conjugated to the secondary antibody, followed by AEC staining. This data demonstrates the use of this antibody for immunohistochemistry; clinical relevance has not been evaluated. HC = hepatocarcinoma.

Gene Info — BMX

Entrez GeneID	660
Protein Accession#	P51813
Gene Name	BMX
Gene Alias	ETK, PSCTK2, PSCTK3
Gene Description	BMX non-receptor tyrosine kinase
Omim ID	300101
Gene Ontology	Hyperlink
Gene Summary	This gene encodes a non-receptor tyrosine kinase belonging to the Tec kinase family. The protein contains a PH-like domain, which mediates membrane targeting by binding to phosphatidylinositol 3,4,5-triphosphate (PIP3), and a SH2 domain that binds to tyrosine-phosphorylated proteins and functions in signal transduction. The protein is implicated in several signal transduction pathways including the Stat pathway, and regulates differentiation and tumorigenicity of several types of cancer cells. Multiple alternatively spliced variants, encoding the same protein, have been identified.

Other Designations

OTTHUMP00000022964|OTTHUMP00000022965|OTTHUMP00000022966

Publication Reference

- [Etk/Bmx, a tyrosine kinase with a pleckstrin-homology domain, is an effector of phosphatidylinositol 3'-kinase and is involved in interleukin 6-induced neuroendocrine differentiation of prostate cancer cells.](#)

Qiu Y, Robinson D, Pretlow TG, Kung HJ.

PNAS 1998 Mar; 95(7):3644.

Application: IP, WB-Tr, Human, LNCaP, CV-1 cells

- [BMX, a novel nonreceptor tyrosine kinase gene of the BTK/ITK/TEC/TKX family located in chromosome Xp22.2.](#)

Tamagnone L, Lahtinen I, Mustonen T, Virtaneva K, Francis F, Muscatelli F, Alitalo R, Smith CI, Larsson C, Alitalo K.

Oncogene 1994 Dec; 9(12).

Disease

- [HIV Infections](#)
- [Lymphoproliferative Disorders](#)
- [Myelodysplastic Syndromes](#)