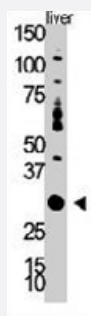


DOK5 polyclonal antibody

Catalog # PAB3409

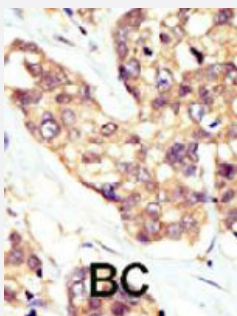
Size 400 uL

Applications



Western Blot (Tissue lysate)

Western blot analysis of DOK5 polyclonal antibody (Cat # PAB3409) in mouse liver tissue lysate. DOK5 (arrow) was detected using the purified polyclonal antibody



Immunohistochemistry (Formalin/PFA-fixed paraffin-embedded sections)

Formalin-fixed and paraffin-embedded human cancer tissue reacted with DOK5 polyclonal antibody (Cat # PAB3409), which was peroxidase-conjugated to the secondary antibody, followed by AEC staining. This data demonstrates the use of this antibody for immunohistochemistry; clinical relevance has not been evaluated. BC = breast carcinoma.

Specification

Product Description	Rabbit polyclonal antibody raised against synthetic peptide of DOK5.
Immunogen	A synthetic peptide (conjugated with KLH) corresponding to amino acids 276-306 of human DOK5.
Host	Rabbit
Reactivity	Human, Mouse
Form	Liquid
Purification	Ammonium sulfate precipitation

Recommend Usage	ELISA Immunohistochemistry (Formalin/PFA-fixed paraffin-embedded sections) (1:50-100) Western Blot (1:1000) The optimal working dilution should be determined by the end user.
Storage Buffer	In PBS (0.09% sodium azide).
Storage Instruction	Store at 4°C. For long term storage store at -20°C. Aliquot to avoid repeated freezing and thawing.
Note	This product contains sodium azide: a POISONOUS AND HAZARDOUS SUBSTANCE which should be handled by trained staff only.

Applications

- Western Blot (Tissue lysate)

Western blot analysis of DOK5 polyclonal antibody (Cat # PAB3409) in mouse liver tissue lysate. DOK5 (arrow) was detected using the purified polyclonal antibody

- Immunohistochemistry (Formalin/PFA-fixed paraffin-embedded sections)

Formalin-fixed and paraffin-embedded human cancer tissue reacted with DOK5 polyclonal antibody (Cat # PAB3409), which was peroxidase-conjugated to the secondary antibody, followed by AEC staining. This data demonstrates the use of this antibody for immunohistochemistry; clinical relevance has not been evaluated. BC = breast carcinoma.

- Enzyme-linked Immunoabsorbent Assay

Gene Info — DOK5

Entrez GeneID	55816
Protein Accession#	Q9P104
Gene Name	DOK5
Gene Alias	C20orf180, MGC16926
Gene Description	docking protein 5
Omim ID	608334
Gene Ontology	Hyperlink

Gene Summary

The protein encoded by this gene is a member of the DOK family of membrane proteins, which are adapter proteins involved in signal transduction. The encoded protein interacts with phosphorylated receptor tyrosine kinases to mediate neurite outgrowth and activation of the MAP kinase pathway. In contrast to other DOK family proteins, this protein does not interact with RASGAP. [provided by RefSeq]

Other Designations

OTTHUMP00000031322|downstream of tyrosine kinase 5

Publication Reference

- [Two new substrates in insulin signaling. IRS5/DOK4 and IRS6/DOK5.](#)

Cai D, Dhe-Paganon S, Melendez PA, Lee J, Shoelson SE.

The Journal of Biological Chemistry 2003 May; 278(28):25323.

- [DOK4 and DOK5: new Dok-related genes expressed in human T cells.](#)

Favre C, Gerard A, Clauzier E, Pontarotti P, Olive D, Nunes JA.

Genes and Immunity 2003 Jan; 4(1):40.

Disease

- [Bipolar Disorder](#)
- [Diabetes Mellitus](#)
- [Dominance](#)
- [Genetic Predisposition to Disease](#)
- [Obesity](#)
- [Ovarian Failure](#)
- [Pattern Recognition](#)
- [Polycystic Ovary Syndrome](#)
- [Puberty](#)
- [Thrombophilia](#)
- [Tobacco Use Disorder](#)