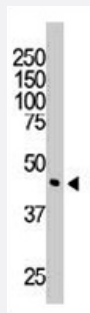


DOK2 polyclonal antibody

Catalog # PAB3407

Size 400 uL

Applications



Western Blot (Cell lysate)

Western blot analysis of DOK2 polyclonal antibody (Cat # PAB3407) in CEM cell lysate. DOK2 (Arrow) was detected using purified polyclonal antibody. Secondary HRP-anti-rabbit was used for signal visualization with chemiluminescence.



Immunohistochemistry (Formalin/PFA-fixed paraffin-embedded sections)

Formalin-fixed and paraffin-embedded human cancer tissue reacted with DOK2 polyclonal antibody (Cat # PAB3407), which was peroxidase-conjugated to the secondary antibody, followed by DAB staining. This data demonstrates the use of this antibody for immunohistochemistry; clinical relevance has not been evaluated. BC = breast carcinoma.

Specification

Product Description	Rabbit polyclonal antibody raised against synthetic peptide of DOK2.
Immunogen	A synthetic peptide (conjugated with KLH) corresponding to C-terminus of human DOK2.
Host	Rabbit
Reactivity	Human
Form	Liquid
Purification	Protein G purification

Recommend Usage	Immunohistochemistry (Formalin/PFA-fixed paraffin-embedded sections) (1:50-100) Western Blot (1:1000) The optimal working dilution should be determined by the end user.
Storage Buffer	In PBS (0.09% sodium azide)
Storage Instruction	Store at 4°C. For long term storage store at -20°C. Aliquot to avoid repeated freezing and thawing.
Note	This product contains sodium azide: a POISONOUS AND HAZARDOUS SUBSTANCE which should be handled by trained staff only.

Applications

- Western Blot (Cell lysate)

Western blot analysis of DOK2 polyclonal antibody (Cat # PAB3407) in CEM cell lysate. DOK2 (Arrow) was detected using purified polyclonal antibody. Secondary HRP-anti-rabbit was used for signal visualization with chemiluminescence.

- Immunohistochemistry (Formalin/PFA-fixed paraffin-embedded sections)

Formalin-fixed and paraffin-embedded human cancer tissue reacted with DOK2 polyclonal antibody (Cat # PAB3407), which was peroxidase-conjugated to the secondary antibody, followed by DAB staining. This data demonstrates the use of this antibody for immunohistochemistry; clinical relevance has not been evaluated. BC = breast carcinoma.

Gene Info — DOK2

Entrez GeneID	9046
Protein Accession#	O60496
Gene Name	DOK2
Gene Alias	p56DOK, p56dok-2
Gene Description	docking protein 2, 56kDa
Omim ID	604997
Gene Ontology	Hyperlink
Gene Summary	The protein encoded by this gene is constitutively tyrosine phosphorylated in hematopoietic progenitors isolated from chronic myelogenous leukemia (CML) patients in the chronic phase. It may be a critical substrate for p210(bcr/abl), a chimeric protein whose presence is associated with CML. This encoded protein binds p120 (RasGAP) from CML cells. [provided by RefSeq]
Other Designations	docking protein 2

Publication Reference

- [Profiling of tyrosine phosphorylation pathways in human cells using mass spectrometry.](#)

Salomon AR, Ficarro SB, Brill LM, Brinker A, Phung QT, Ericson C, Sauer K, Brock A, Horn DM, Schultz PG, Peters EC.
PNAS 2003 Jan; 100(2):443.

- [Molecular cloning and characterization of p56dok-2 defines a new family of RasGAP-binding proteins.](#)

Di Cristofano A, Carpino N, Dunant N, Friedland G, Kobayashi R, Strife A, Wisniewski D, Clarkson B, Pandolfi PP, Resh MD.
The Journal of Biological Chemistry 1998 Feb; 273(9):4827.

Application: IP, WB-Tr, Monkey, COS cells

Disease

- [Cardiovascular Diseases](#)
- [Diabetes Mellitus](#)
- [Edema](#)