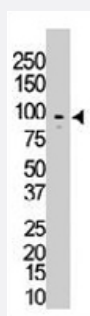


TYRO3 polyclonal antibody

Catalog # PAB3391

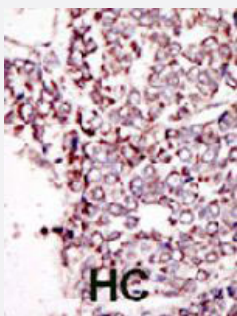
Size 400 uL

Applications



Western Blot (Tissue lysate)

Western blot analysis of TYRO3 polyclonal antibody (Cat # PAB3391) in mouse brain lysate. SKY (arrow) was detected using purified polyclonal antibody. Secondary HRP-anti-rabbit was used for signal visualization with chemiluminescence.



Immunohistochemistry (Formalin/PFA-fixed paraffin-embedded sections)

Formalin-fixed and paraffin-embedded human hepatocellular carcinoma tissue reacted with TYRO3 polyclonal antibody (Cat # PAB3391), which was peroxidase-conjugated to the secondary antibody, followed by DAB staining. This data demonstrates the use of this antibody for immunohistochemistry; clinical relevance has not been evaluated. HC = hepatocarcinoma.

Specification

Product Description	Rabbit polyclonal antibody raised against synthetic peptide of TYRO3.
Immunogen	A synthetic peptide (conjugated with KLH) corresponding to C-terminus of human TYRO3.
Host	Rabbit
Reactivity	Human, Mouse
Form	Liquid
Purification	Protein G purification

Recommend Usage	Immunohistochemistry (Formalin/PFA-fixed paraffin-embedded sections) (1:50-100) Western Blot (1:1000) The optimal working dilution should be determined by the end user.
Storage Buffer	In PBS (0.09% sodium azide)
Storage Instruction	Store at 4°C. For long term storage store at -20°C. Aliquot to avoid repeated freezing and thawing.
Note	This product contains sodium azide: a POISONOUS AND HAZARDOUS SUBSTANCE which should be handled by trained staff only.

Applications

- Western Blot (Tissue lysate)

Western blot analysis of TYRO3 polyclonal antibody (Cat # PAB3391) in mouse brain lysate. SKY (arrow) was detected using purified polyclonal antibody. Secondary HRP-anti-rabbit was used for signal visualization with chemiluminescence.

- Immunohistochemistry (Formalin/PFA-fixed paraffin-embedded sections)

Formalin-fixed and paraffin-embedded human hepatocellular carcinoma tissue reacted with TYRO3 polyclonal antibody (Cat # PAB3391), which was peroxidase-conjugated to the secondary antibody, followed by DAB staining. This data demonstrates the use of this antibody for immunohistochemistry; clinical relevance has not been evaluated. HC = hepatocarcinoma.

Gene Info — TYRO3

Entrez GeneID	7301
Protein Accession#	NP_006284
Gene Name	TYRO3
Gene Alias	BYK, Brt, Dtk, FLJ16467, RSE, Sky, Tif
Gene Description	TYRO3 protein tyrosine kinase
Omim ID	600341
Gene Ontology	Hyperlink
Other Designations	Tyro3 protein tyrosine kinase (sea-related receptor tyrosine kinase) tyrosine-protein kinase receptor or TYRO3

Publication Reference

- [Prognostic Significance of TYRO3 Receptor Tyrosine Kinase Expression in Gastric Cancer.](#)

Chihiro Uejima, Masaki Morimoto, Manabu Yamamoto, Kazushi Hara, Wataru Miyauchi, Ken Sugezawa, Yoichiro Tada, Akimitsu Tanio, Kyoichi Kihara, Tomoyuki Matsunaga, Naruo Tokuyasu, Teruhisa Sakamoto, Soichiro Honjo, Yoshihisa Umekita, Yoshiyuki Fujiwara.

Anticancer Research 2020 Oct; 40(10):5593.

Application: IHC-P, Human, Human gastric cancer, Human pancreas

- [Regional localization of human chromosome 15 loci.](#)

Richard I, Broux O, Chiannikulchai N, Fougousse F, Allamand V, Bourg N, Brenguier L, Devaud C, Pasturaud P, Roudaut C, et al..

Genomics 1994 Oct; 23(3):619.

Application: WB-Ce, WB-Tr, Human, Mammalian cells

- [rse, a novel receptor-type tyrosine kinase with homology to Axl/Ufo, is expressed at high levels in the brain.](#)

Mark MR, Scadden DT, Wang Z, Gu Q, Goddard A, Godowski PJ.

The Journal of Biological Chemistry 1994 Apr; 269(14):10720.

Application: IP, WB-Tr, Mouse, NIH/3T3 cells

Disease

- [Carotid Artery Diseases](#)
- [Genetic Predisposition to Disease](#)
- [Stroke](#)