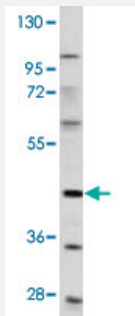


# PDGFRL polyclonal antibody

Catalog # PAB3378

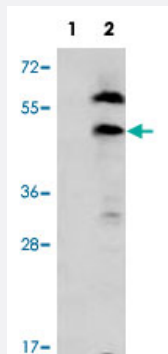
Size 400 uL

## Applications



### Western Blot (Cell lysate)

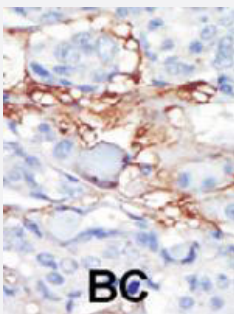
Western blot analysis of HeLa cell lysate (35 ug/lane) with PDGFRL polyclonal antibody (Cat # PAB3378).



### Western Blot (Transfected lysate)

Western blot analysis of PDGFRL (arrow) using PDGFRL polyclonal antibody (Cat # PAB3378).

293 cell lysates (2 ug/lane) either nontransfected (Lane 1) or transiently transfected with the PDGFRL gene (Lane 2).



### Immunohistochemistry (Formalin/PFA-fixed paraffin-embedded sections)

Formalin-fixed and paraffin-embedded human cancer tissue reacted with PDGFRL polyclonal antibody (Cat # PAB3378), which was peroxidase-conjugated to the secondary antibody, followed by DAB staining. This data demonstrates the use of this antibody for immunohistochemistry; clinical relevance has not been evaluated. BC = breast carcinoma.

## Specification

### Product Description

Rabbit polyclonal antibody raised against synthetic peptide of PDGFRL.

<b>Immunogen</b>	A synthetic peptide (conjugated with KLH) corresponding to C-terminus of human PDGFRL.
<b>Host</b>	Rabbit
<b>Reactivity</b>	Human
<b>Form</b>	Liquid
<b>Purification</b>	Protein G purification
<b>Recommend Usage</b>	Immunohistochemistry (Formalin/PFA-fixed paraffin-embedded sections) (1:50-100) Western Blot (1:1000) The optimal working dilution should be determined by the end user.
<b>Storage Buffer</b>	In PBS (0.09% sodium azide)
<b>Storage Instruction</b>	Store at 4°C. For long term storage store at -20°C. Aliquot to avoid repeated freezing and thawing.
<b>Note</b>	This product contains sodium azide: a POISONOUS AND HAZARDOUS SUBSTANCE which should be handled by trained staff only.

## Applications

- Western Blot (Cell lysate)

Western blot analysis of HeLa cell lysate (35 ug/lane) with PDGFRL polyclonal antibody (Cat # PAB3378).

- Western Blot (Transfected lysate)

Western blot analysis of PDGFRL (arrow) using PDGFRL polyclonal antibody (Cat # PAB3378).  
293 cell lysates (2 ug/lane) either nontransfected (Lane 1) or transiently transfected with the PDGFRL gene (Lane 2).

- Immunohistochemistry (Formalin/PFA-fixed paraffin-embedded sections)

Formalin-fixed and paraffin-embedded human cancer tissue reacted with PDGFRL polyclonal antibody (Cat # PAB3378), which was peroxidase-conjugated to the secondary antibody, followed by DAB staining. This data demonstrates the use of this antibody for immunohistochemistry; clinical relevance has not been evaluated. BC = breast carcinoma.

## Gene Info — PDGFRL

<b>Entrez GeneID</b>	<a href="#">5157</a>
<b>Protein Accession#</b>	<a href="#">Q15198</a>
<b>Gene Name</b>	PDGFRL
<b>Gene Alias</b>	PDGRL, PRLTS

Gene Description	platelet-derived growth factor receptor-like
Omim ID	<a href="#">114500</a> <a href="#">114550</a> <a href="#">604584</a>
Gene Ontology	<a href="#">Hyperlink</a>
Gene Summary	<p>This gene encodes a protein with significant sequence similarity to the ligand binding domain of platelet-derived growth factor receptor beta. Mutations in this gene, or deletion of a chromosomal segment containing this gene, are associated with sporadic hepatocellular carcinomas, colorectal cancers, and non-small cell lung cancers. This suggests this gene product may function as a tumor suppressor. [provided by RefSeq]</p>
Other Designations	OTTHUMP00000161390 platelet-derived growth factor receptor-like protein platelet-derived growth factor-beta-like tumor suppressor