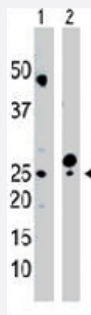


CMPK1 polyclonal antibody

Catalog # PAB3351

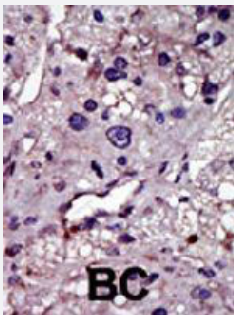
Size 400 uL

Applications



Western Blot

The CMPK1 polyclonal antibody (Cat # PAB3351) is used in Western blot to detect CMPK1 in mouse cerebellum tissue lysate (Lane 1) and HepG2 cell lysate (Lane 2) .



Immunohistochemistry (Formalin/PFA-fixed paraffin-embedded sections)

Formalin-fixed and paraffin-embedded human cancer tissue reacted with CMPK1 polyclonal antibody (Cat # PAB3351) , which was peroxidase-conjugated to the secondary antibody, followed by AEC staining. This data demonstrates the use of this antibody for immunohistochemistry ; clinical relevance has not been evaluated. BC = breast carcinoma.

Specification

Product Description	Rabbit polyclonal antibody raised against synthetic peptide of CMPK1.
Immunogen	A synthetic peptide (conjugated with KLH) corresponding to N-terminus of human CMPK1.
Host	Rabbit
Reactivity	Human, Mouse
Form	Liquid
Purification	Protein G purification

Recommend Usage	Immunohistochemistry (Formalin/PFA-fixed paraffin-embedded sections) (1:50-100) Western Blot (1:1000) The optimal working dilution should be determined by the end user.
Storage Buffer	In PBS (0.09% sodium azide)
Storage Instruction	Store at 4°C. For long term storage store at -20°C. Aliquot to avoid repeated freezing and thawing.
Note	This product contains sodium azide: a POISONOUS AND HAZARDOUS SUBSTANCE which should be handled by trained staff only.

Applications

- Western Blot

The CMPK1 polyclonal antibody (Cat # PAB3351) is used in Western blot to detect CMPK1 in mouse cerebellum tissue lysate (Lane 1) and HepG2 cell lysate (Lane 2) .

- Immunohistochemistry (Formalin/PFA-fixed paraffin-embedded sections)

Formalin-fixed and paraffin-embedded human cancer tissue reacted with CMPK1 polyclonal antibody (Cat # PAB3351) , which was peroxidase-conjugated to the secondary antibody, followed by AEC staining. This data demonstrates the use of this antibody for immunohistochemistry ; clinical relevance has not been evaluated. BC = breast carcinoma.

Gene Info — CMPK1

Entrez GeneID	51727
Protein Accession#	P30085
Gene Name	CMPK1
Gene Alias	CMK, CMPK, UMK, UMP-CMPK, UMPK
Gene Description	cytidine monophosphate (UMP-CMP) kinase 1, cytosolic
Omim ID	191710
Gene Ontology	Hyperlink
Gene Summary	Uridine monophosphate (UMP)/cytidine monophosphate (CMP) kinase (EC 2.7.4.4) catalyzes the phosphoryl transfer from ATP to UMP, CMP, and deoxy-CMP (dCMP), resulting in the formation of ADP and the corresponding nucleoside diphosphate. These nucleoside diphosphates are required for cellular nucleic acid synthesis (Liou et al., 2002 [PubMed 11912132]).[supplied by OMIM]
Other Designations	Cytidine monophosphate kinase OTTHUMP00000009565 UMP-CMP kinase cytidylate kinase

Publication Reference

- [Generation and initial analysis of more than 15,000 full-length human and mouse cDNA sequences.](#)

Strausberg RL, Feingold EA, Grouse LH, Derge JG, Klausner RD, Collins FS, Wagner L, Shenmen CM, Schuler GD, Altschul SF, Zeeberg B, Buetow KH, Schaefer CF, Bhat NK, Hopkins RF, Jordan H, Moore T, Max SI, Wang J, Hsieh F, Diatchenko L, Marusina K, Farmer AA, Rubin GM, Hong L, Stapleton M, Soares MB, Bonaldo MF, Casavant TL, Scheetz TE, Brownstein MJ, Ustin TB, Toshiyuki S, Carninci P, Prange C, Raha SS, Loquellano NA, Peters GJ, Abramson RD, Mullahy SJ, Bosak SA, McEwan PJ, McKernan KJ, Malek JA,

PNAS 2002 Dec; 99(26):16899.

- [Gene expression profiling in the human hypothalamus-pituitary-adrenal axis and full-length cDNA cloning.](#)

Hu RM, Han ZG, Song HD, Peng YD, Huang QH, Ren SX, Gu YJ, Huang CH, Li YB, Jiang CL, Fu G, Zhang QH, Gu BW, Dai M, Mao YF, Gao GF, Rong R, Ye M, Zhou J, Xu SH, Gu J, Shi JX, Jin WR, Zhang CK, Wu TM, Huang GY, Chen Z, Chen MD, Chen JL.

PNAS 2000 Aug; 97(17):9543.

- [Human liver protein map: update 1993.](#)

Hughes GJ, Frutiger S, Paquet N, Pasquali C, Sanchez JC, Tissot JD, Bairoch A, Appel RD, Hochstrasser DF.

Electrophoresis 1993 Nov; 14(11):1216.

Pathway

- [Metabolic pathways](#)
- [Pyrimidine metabolism](#)