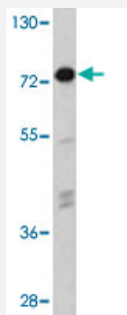


EIF2AK1 polyclonal antibody

Catalog # PAB3333

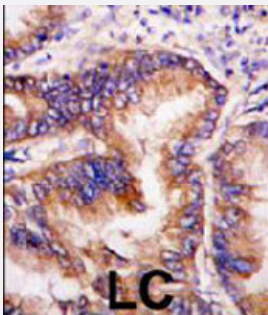
Size 400 uL

Applications



Western Blot (Cell lysate)

Western blot analysis of HeLa cell lysate (35 ug/lane) with EIF2AK1 polyclonal antibody (Cat # PAB3333).



Immunohistochemistry (Formalin/PFA-fixed paraffin-embedded sections)

Formalin-fixed and paraffin-embedded human lung carcinoma tissue reacted with EIF2AK1 polyclonal antibody (Cat # PAB3333), which was peroxidase-conjugated to the secondary antibody, followed by DAB staining. This data demonstrates the use of this antibody for immunohistochemistry; clinical relevance has not been evaluated.

Specification

Product Description	Rabbit polyclonal antibody raised against synthetic peptide of EIF2AK1.
Immunogen	A synthetic peptide (conjugated with KLH) corresponding to internal region of human EIF2AK1.
Host	Rabbit
Reactivity	Human
Form	Liquid
Purification	Protein A purification

Recommend Usage	Immunohistochemistry (Formalin/PFA-fixed paraffin-embedded sections) (1:10-50) Western Blot (1:1000) The optimal working dilution should be determined by the end user.
Storage Buffer	In PBS (0.09% sodium azide)
Storage Instruction	Store at 4°C. For long term storage store at -20°C. Aliquot to avoid repeated freezing and thawing.
Note	This product contains sodium azide: a POISONOUS AND HAZARDOUS SUBSTANCE which should be handled by trained staff only.

Applications

- Western Blot (Cell lysate)

Western blot analysis of HeLa cell lysate (35 ug/lane) with EIF2AK1 polyclonal antibody (Cat # PAB3333).

- Immunohistochemistry (Formalin/PFA-fixed paraffin-embedded sections)

Formalin-fixed and paraffin-embedded human lung carcinoma tissue reacted with EIF2AK1 polyclonal antibody (Cat # PAB3333), which was peroxidase-conjugated to the secondary antibody, followed by DAB staining. This data demonstrates the use of this antibody for immunohistochemistry; clinical relevance has not been evaluated.

Gene Info — EIF2AK1

Entrez GeneID	27102
Protein Accession#	NP_055228;Q9BQI3
Gene Name	EIF2AK1
Gene Alias	HCR, HRI, KIAA1369
Gene Description	eukaryotic translation initiation factor 2-alpha kinase 1
Gene Ontology	Hyperlink
Gene Summary	The protein encoded by this gene acts at the level of translation initiation to downregulate protein synthesis in response to stress. The encoded protein is a kinase that can be inactivated by hemin. Two transcript variants encoding different isoforms have been found for this gene. [provided by RefSeq]
Other Designations	heme regulated initiation factor 2 alpha kinase heme sensitive initiation factor 2a kinase heme-regulated inhibitor heme-regulated initiation factor 2-alpha kinase heme-regulated repressor

Publication Reference

- [Molecular cloning and sequencing of the human heme-regulated eukaryotic initiation factor 2 alpha \(eIF-2 alpha\) kinase from bone marrow culture.](#)
Omasa T, Chen YG, Mantalaris A, Tsai YC, Wu JH.
DNA Seq 2002 Jun; 13(3):133.
- [Cloning of hHRI, human heme-regulated eukaryotic initiation factor 2alpha kinase: down-regulated in epithelial ovarian cancers.](#)
Hwang SY, Kim MK, Kim JC.
Molecules and Cells 2000 Oct; 10(5):584.

Disease

- [Cerebral Hemorrhage](#)
- [Genetic Predisposition to Disease](#)
- [Hypertension](#)
- [Intracranial Hemorrhages](#)
- [Kidney Failure](#)
- [Stroke](#)
- [Subarachnoid Hemorrhage](#)