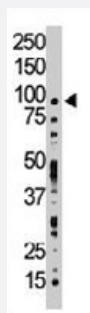


# TLK1 polyclonal antibody

Catalog # PAB3318

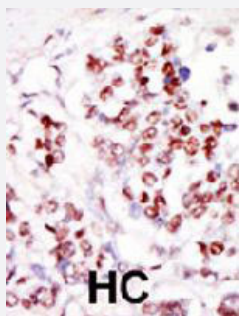
Size 400 uL

## Applications



### Western Blot (Cell lysate)

Western blot analysis of TLK1 polyclonal antibody (Cat # PAB3318) in HL-60 cell lysate. TLK1 (Arrow) was detected using purified polyclonal antibody. Secondary HRP-anti-rabbit was used for signal visualization with chemiluminescence.



### Immunohistochemistry (Formalin/PFA-fixed paraffin-embedded sections)

Formalin-fixed and paraffin-embedded human hepatocellular carcinoma tissue reacted with TLK1 polyclonal antibody (Cat # PAB3318), which was peroxidase-conjugated to the secondary antibody, followed by DAB staining. This data demonstrates the use of this antibody for immunohistochemistry; clinical relevance has not been evaluated. HC = hepatocarcinoma.

## Specification

|                            |  |
|----------------------------|--|
| <b>Product Description</b> | Rabbit polyclonal antibody raised against synthetic peptide of TLK1.                 |
| <b>Immunogen</b>           | A synthetic peptide (conjugated with KLH) corresponding to C-terminus of human TLK1. |
| <b>Host</b>                | Rabbit   |
| <b>Reactivity</b>          | Human  |
| <b>Form</b>                | Liquid   |
| <b>Purification</b>        | Protein G purification   |

|                            |  |
|----------------------------|--|
| <b>Recommend Usage</b>     | Immunohistochemistry (Formalin/PFA-fixed paraffin-embedded sections) (1:50-100)<br>Western Blot (1:1000)<br>The optimal working dilution should be determined by the end user. |
| <b>Storage Buffer</b>      | In PBS (0.09% sodium azide)  |
| <b>Storage Instruction</b> | Store at 4°C. For long term storage store at -20°C.<br>Aliquot to avoid repeated freezing and thawing.   |
| <b>Note</b>                | This product contains sodium azide: a POISONOUS AND HAZARDOUS SUBSTANCE which should be handled by trained staff only.   |

## Applications

- Western Blot (Cell lysate)

Western blot analysis of TLK1 polyclonal antibody (Cat # PAB3318) in HL-60 cell lysate. TLK1 (Arrow) was detected using purified polyclonal antibody. Secondary HRP-anti-rabbit was used for signal visualization with chemiluminescence.

- Immunohistochemistry (Formalin/PFA-fixed paraffin-embedded sections)

Formalin-fixed and paraffin-embedded human hepatocellular carcinoma tissue reacted with TLK1 polyclonal antibody (Cat # PAB3318), which was peroxidase-conjugated to the secondary antibody, followed by DAB staining. This data demonstrates the use of this antibody for immunohistochemistry; clinical relevance has not been evaluated. HC = hepatocarcinoma.

## Gene Info — TLK1

|                           |   |
|---------------------------|---|
| <b>Entrez GeneID</b>      | <a href="#">9874</a>  |
| <b>Protein Accession#</b> | <a href="#">Q9UKI8</a>  |
| <b>Gene Name</b>          | TLK1  |
| <b>Gene Alias</b>         | KIAA0137, PKU-beta  |
| <b>Gene Description</b>   | tousled-like kinase 1   |
| <b>Omim ID</b>            | <a href="#">608438</a>  |
| <b>Gene Ontology</b>      | <a href="#">Hyperlink</a>   |
| <b>Gene Summary</b>       | The Tousled-like kinases, first described in Arabidopsis, are nuclear serine/threonine kinases that are potentially involved in the regulation of chromatin assembly.[supplied by OMIM] |
| <b>Other Designations</b> | SNARE protein kinase SNAK serine threonine protein kinase   |

## Publication Reference

- [Suppression of Tousled-like kinase activity after DNA damage or replication block requires ATM, NBS1 and Chk1.](#)

Krause DR, Jonnalagadda JC, Gatei MH, Sillje HH, Zhou BB, Nigg EA, Khanna K.

Oncogene 2003 Sep; 22(38):5927.

Application: IP, WB-Tr, Human, AT1ABR, C2ABR, HCT-115, L3 cells

- [Phosphorylation of SNAP-23 by the novel kinase SNAK regulates t-SNARE complex assembly.](#)

Cabaniols JP, Ravichandran V, Roche PA.

Molecular Biology of the Cell 1999 Dec; 10(12):4033.

Application: IP, Human, HeLa cells

- [Mammalian homologues of the plant Tousled gene code for cell-cycle-regulated kinases with maximal activities linked to ongoing DNA replication.](#)

Sillje HH, Takahashi K, Tanaka K, Van Houwe G, Nigg EA.

The EMBO Journal 1999 Oct; 18(20):5691.

Application: IF, IP, KA, WB-Ce, WB-Re, Human, HeLa cells, Recombinant protein, U2-OS cells