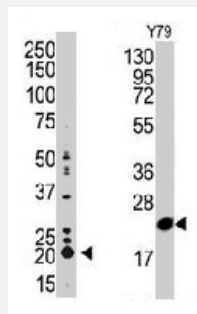


# PEBP1 polyclonal antibody

Catalog # PAB3307

Size 400 uL

## Applications

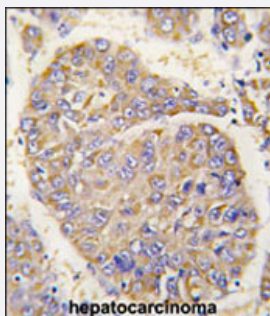


### Western Blot (Cell lysate)

(LEFT) The PEBP1 polyclonal antibody (Cat # PAB3307) is used in Western blot to detect PEBP1 in HeLa cell lysate.

(RIGHT) Western blot analysis of PEBP1 polyclonal antibody (Cat # PAB3307) in Y-79 cell line lysate (35 ug/lane).

PEBP1 (arrow) was detected using the purified polyclonal antibody (1 : 60 dilution).



### Immunohistochemistry (Formalin/PFA-fixed paraffin-embedded sections)

Formalin-fixed and paraffin-embedded human hepatocellular carcinoma tissue reacted with PEBP1 polyclonal antibody (Cat # PAB3307) , which was peroxidase-conjugated to the secondary antibody, followed by DAB staining. This data demonstrates the use of this antibody for immunohistochemistry; clinical relevance has not been evaluated. HC = hepatocarcinoma.

## Specification

Product Description	Rabbit polyclonal antibody raised against synthetic peptide of PEBP1.
Immunogen	A synthetic peptide (conjugated with KLH) corresponding to N-terminus of human PEBP1.
Host	Rabbit
Reactivity	Human, Mouse
Form	Liquid
Purification	Protein G purification

<b>Recommend Usage</b>	Immunohistochemistry (Formalin/PFA-fixed paraffin-embedded sections) (1:50-100) Western Blot (1:1000) The optimal working dilution should be determined by the end user.
<b>Storage Buffer</b>	In PBS (0.09% sodium azide)
<b>Storage Instruction</b>	Store at 4°C. For long term storage store at -20°C. Aliquot to avoid repeated freezing and thawing.
<b>Note</b>	This product contains sodium azide: a POISONOUS AND HAZARDOUS SUBSTANCE which should be handled by trained staff only.

## Applications

- Western Blot (Cell lysate)

(LEFT) The PEBP1 polyclonal antibody (Cat # PAB3307) is used in Western blot to detect PEBP1 in HeLa cell lysate.

(RIGHT) Western blot analysis of PEBP1 polyclonal antibody (Cat # PAB3307) in Y-79 cell line lysate (35 ug/lane).

PEBP1 (arrow) was detected using the purified polyclonal antibody (1 : 60 dilution).

- Immunohistochemistry (Formalin/PFA-fixed paraffin-embedded sections)

Formalin-fixed and paraffin-embedded human hepatocellular carcinoma tissue reacted with PEBP1 polyclonal antibody (Cat # PAB3307), which was peroxidase-conjugated to the secondary antibody, followed by DAB staining. This data demonstrates the use of this antibody for immunohistochemistry; clinical relevance has not been evaluated. HC = hepatocarcinoma.

## Gene Info — PEBP1

<b>Entrez GeneID</b>	<a href="#">5037</a>
<b>Protein Accession#</b>	<a href="#">NP_002558:P30086</a>
<b>Gene Name</b>	PEBP1
<b>Gene Alias</b>	HCNP, PBP, PEBP, RKIP
<b>Gene Description</b>	phosphatidylethanolamine binding protein 1
<b>Omim ID</b>	<a href="#">604591</a>
<b>Gene Ontology</b>	<a href="#">Hyperlink</a>
<b>Other Designations</b>	Raf kinase inhibitory protein prostatic binding protein

## Publication Reference

- [Sequence homology of rat and human HCNP precursor proteins, bovine phosphatidylethanolamine-binding protein and rat 23-kDa protein associated with the opioid-binding protein.](#)

Tohdoh N, Tojo S, Agui H, Ojika K.

Brain Research 1995 Jun; 30(2):381.

Application: IHC, WB-Ti, Rat, Rat medial septal tissues

- [Amino acid sequence of the Homo sapiens brain 21-23-kDa protein \(neuropolypeptide h3\), comparison with its counterparts from Rattus norvegicus and Bos taurus species, and expression of its mRNA in different tissues.](#)

Seddiqi N, Bollengier F, Alliel PM, Perin JP, Bonnet F, Bucquoy S, Jolles P, Schoentgen F.

Journal of Molecular Evolution 1994 Dec; 39(6):655.

- [A human cDNA sequence homologue of bovine phosphatidylethanolamine-binding protein.](#)

Hori N, Chae KS, Murakawa K, Matoba R, Fukushima A, Okubo K, Matsubara K.

Gene 1994 Mar; 140(2):293.