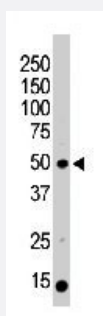


PACSIN3 polyclonal antibody

Catalog # PAB3303

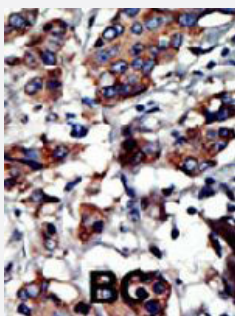
Size 400 uL

Applications



Western Blot (Tissue lysate)

The PACSIN3 polyclonal antibody (Cat # PAB3303) is used in Western blot to detect PACSIN3 in mouse brain tissue lysate.



Immunohistochemistry (Formalin/PFA-fixed paraffin-embedded sections)

Formalin-fixed and paraffin-embedded human cancer tissue reacted with PACSIN3 polyclonal antibody (Cat # PAB3303), which was peroxidase-conjugated to the secondary antibody, followed by AEC staining. This data demonstrates the use of this antibody for immunohistochemistry; clinical relevance has not been evaluated. BC = breast carcinoma.

Specification

Product Description	Rabbit polyclonal antibody raised against synthetic peptide of PACSIN3.
Immunogen	A synthetic peptide (conjugated with KLH) corresponding to N-terminus of human PACSIN3.
Host	Rabbit
Reactivity	Human, Mouse
Form	Liquid
Purification	Protein G purification

Recommend Usage	Immunohistochemistry (Formalin/PFA-fixed paraffin-embedded sections) (1:50-100) Western Blot (1:2000) The optimal working dilution should be determined by the end user.
Storage Buffer	In PBS (0.09% sodium azide)
Storage Instruction	Store at 4°C. For long term storage store at -20°C. Aliquot to avoid repeated freezing and thawing.
Note	This product contains sodium azide: a POISONOUS AND HAZARDOUS SUBSTANCE which should be handled by trained staff only.

Applications

- Western Blot (Tissue lysate)

The PACSIN3 polyclonal antibody (Cat # PAB3303) is used in Western blot to detect PACSIN3 in mouse brain tissue lysate.

- Immunohistochemistry (Formalin/PFA-fixed paraffin-embedded sections)

Formalin-fixed and paraffin-embedded human cancer tissue reacted with PACSIN3 polyclonal antibody (Cat # PAB3303), which was peroxidase-conjugated to the secondary antibody, followed by AEC staining. This data demonstrates the use of this antibody for immunohistochemistry; clinical relevance has not been evaluated. BC = breast carcinoma.

Gene Info — PACSIN3

Entrez GeneID	29763
Protein Accession#	Q9UKS6
Gene Name	PACSIN3
Gene Alias	SDPIII
Gene Description	protein kinase C and casein kinase substrate in neurons 3
Omim ID	606513
Gene Ontology	Hyperlink
Other Designations	SH3 domain-containing protein 6511 syndapin III

Publication Reference

- [PACSIN 3 is a novel SH3 domain cytoplasmic adapter protein of the pacsin-syndapin-FAP52 gene family.](#)

Sumoy L, Pluvinet R, Andreu N, Estivill X, Escarceller M.

Gene 2001 Jan; 262(1-2):199.

- [All three PACSIN isoforms bind to endocytic proteins and inhibit endocytosis.](#)

Modregger J, Ritter B, Witter B, Paulsson M, Plomann M.

Journal of Cell Science 2000 Dec; 113Pt 24:4511.

Application: IF, WB-Ti, Mouse, Brain, Heart, Liver, Lung, Kidney, Muscle, Spleen, Testis, Thymus, Uterus, C2F3 myotubes

- [Interaction of the metalloprotease disintegrins MDC9 and MDC15 with two SH3 domain-containing proteins, endophilin I and SH3PX1.](#)

Howard L, Nelson KK, Maciewicz RA, Blobel CP.

The Journal of Biological Chemistry 1999 Oct; 274(44):31693.

Application: WB-Ce, WB-Tr, Human, Monkey, COS-7, HEK 293, HeLa cells