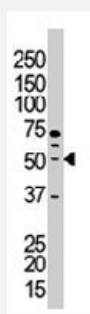


PACSIN1 polyclonal antibody

Catalog # PAB3300

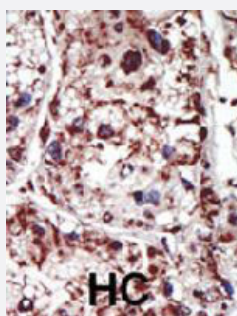
Size 400 uL

Applications



Western Blot (Tissue lysate)

The PACSIN1 polyclonal antibody (Cat # PAB3300) is used in Western blot to detect PACSIN1 in mouse brain tissue lysate.



Immunohistochemistry (Formalin/PFA-fixed paraffin-embedded sections)

Formalin-fixed and paraffin-embedded human hepatocellular carcinoma tissue reacted with PACSIN1 polyclonal antibody (Cat # PAB3300), which was peroxidase-conjugated to the secondary antibody, followed by DAB staining. This data demonstrates the use of this antibody for immunohistochemistry; clinical relevance has not been evaluated. HC = hepatocarcinoma.

Specification

Product Description	Rabbit polyclonal antibody raised against synthetic peptide of PACSIN1.
Immunogen	A synthetic peptide (conjugated with KLH) corresponding to internal region of human PACSIN1.
Host	Rabbit
Reactivity	Human, Mouse
Form	Liquid
Purification	Protein G purification

Recommend Usage	Immunohistochemistry (Formalin/PFA-fixed paraffin-embedded sections) (1:50-100) Western Blot (1:1000) The optimal working dilution should be determined by the end user.
Storage Buffer	In PBS (0.09% sodium azide)
Storage Instruction	Store at 4°C. For long term storage store at -20°C. Aliquot to avoid repeated freezing and thawing.
Note	This product contains sodium azide: a POISONOUS AND HAZARDOUS SUBSTANCE which should be handled by trained staff only.

Applications

- Western Blot (Tissue lysate)

The PACSIN1 polyclonal antibody (Cat # PAB3300) is used in Western blot to detect PACSIN1 in mouse brain tissue lysate.

- Immunohistochemistry (Formalin/PFA-fixed paraffin-embedded sections)

Formalin-fixed and paraffin-embedded human hepatocellular carcinoma tissue reacted with PACSIN1 polyclonal antibody (Cat # PAB3300), which was peroxidase-conjugated to the secondary antibody, followed by DAB staining. This data demonstrates the use of this antibody for immunohistochemistry; clinical relevance has not been evaluated. HC = hepatocarcinoma.

Gene Info — PACSIN1

Entrez GeneID	29993
Protein Accession#	Q9BY11
Gene Name	PACSIN1
Gene Alias	KIAA1379, SDPI
Gene Description	protein kinase C and casein kinase substrate in neurons 1
Omim ID	606512
Gene Ontology	Hyperlink
Other Designations	OTTHUMP00000016231 syndapin I

Publication Reference

- [PACSIN 3 is a novel SH3 domain cytoplasmic adapter protein of the pacsin-syndapin-FAP52 gene family.](#)

Sumoy L, Pluvinet R, Andreu N, Estivill X, Escarceller M.

Gene 2001 Jan; 262(1-2):199.

Disease

- [Carcinoma](#)
- [Esophageal Neoplasms](#)