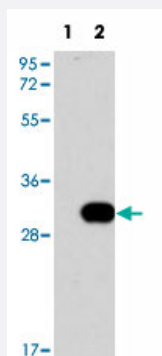


NEK7 polyclonal antibody

Catalog # PAB3288

Size 400 uL

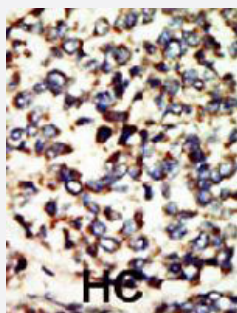
Applications



Western Blot (Transfected lysate)

Western blot analysis of NEK7 (arrow) using NEK7 polyclonal antibody (Cat # PAB3288).

293 cell lysates (2 ug/lane) either nontransfected (Lane 1) or transiently transfected with the NEK7 gene (Lane 2).



Immunohistochemistry (Formalin/PFA-fixed paraffin-embedded sections)

Formalin-fixed and paraffin-embedded human hepatocellular carcinoma tissue reacted with NEK7 polyclonal antibody (Cat # PAB3288), which was peroxidase-conjugated to the secondary antibody, followed by DAB staining. This data demonstrates the use of this antibody for immunohistochemistry; clinical relevance has not been evaluated. HC = hepatocarcinoma.

Specification

Product Description	Rabbit polyclonal antibody raised against synthetic peptide of NEK7.
Immunogen	A synthetic peptide (conjugated with KLH) corresponding to N-terminus of human NEK7.
Host	Rabbit
Reactivity	Human
Form	Liquid
Purification	Protein G purification

Recommend Usage	Immunohistochemistry (Formalin/PFA-fixed paraffin-embedded sections) (1:50-100) Western Blot (1:1000) The optimal working dilution should be determined by the end user.
Storage Buffer	In PBS (0.09% sodium azide)
Storage Instruction	Store at 4°C. For long term storage store at -20°C. Aliquot to avoid repeated freezing and thawing.
Note	This product contains sodium azide: a POISONOUS AND HAZARDOUS SUBSTANCE which should be handled by trained staff only.

Applications

- Western Blot (Transfected lysate)

Western blot analysis of NEK7 (arrow) using NEK7 polyclonal antibody (Cat # PAB3288).
293 cell lysates (2 ug/lane) either nontransfected (Lane 1) or transiently transfected with the NEK7 gene (Lane 2).

- Immunohistochemistry (Formalin/PFA-fixed paraffin-embedded sections)

Formalin-fixed and paraffin-embedded human hepatocellular carcinoma tissue reacted with NEK7 polyclonal antibody (Cat # PAB3288), which was peroxidase-conjugated to the secondary antibody, followed by DAB staining. This data demonstrates the use of this antibody for immunohistochemistry; clinical relevance has not been evaluated. HC = hepatocarcinoma.

Gene Info — NEK7

Entrez GeneID	140609
Protein Accession#	Q8TDX7
Gene Name	NEK7
Gene Alias	-
Gene Description	NIMA (never in mitosis gene a)-related kinase 7
Omim ID	606848
Gene Ontology	Hyperlink
Gene Summary	NIMA-related kinases share high amino acid sequence identity with the gene product of the Aspergillus nidulans 'never in mitosis A' gene, which controls initiation of mitosis.[supplied by OMIM]
Other Designations	OTTHUMP00000033680

Publication Reference

- [A mitotic cascade of NIMA family kinases. Nercc1/Nek9 activates the Nek6 and Nek7 kinases.](#)

Belham C, Roig J, Caldwell JA, Aoyama Y, Kemp BE, Comb M, Avruch J.

The Journal of Biological Chemistry 2003 Sep; 278(37):34897.

- [Identification and assignment of the human NIMA-related protein kinase 7 gene \(NEK7\) to human chromosome 1q31.3.](#)

Kimura M, Okano Y.

Cytogenetics and Cell Genetics 2001 Dec; 94(1-2):33.

Disease

- [Adenocarcinoma](#)
- [Genetic Predisposition to Disease](#)
- [Pancreatic Neoplasms](#)