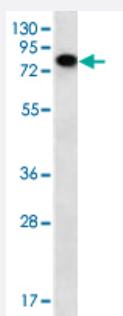


NEK3 polyclonal antibody

Catalog # PAB3285

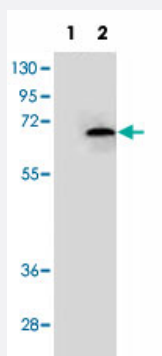
Size 400 uL

Applications



Western Blot (Cell lysate)

Western blot analysis of CEM cell lysate (35 ug/lane) with NEK3 polyclonal antibody (Cat # PAB3285).



Western Blot (Transfected lysate)

Western blot analysis of NEK3 (arrow) using NEK3 polyclonal antibody (Cat # PAB3285).

293 cell lysates (2 ug/lane) either nontransfected (Lane 1) or transiently transfected with the NEK3 gene (Lane 2).

Specification

Product Description

Rabbit polyclonal antibody raised against synthetic peptide of NEK3.

Immunogen

A synthetic peptide (conjugated with KLH) corresponding to internal region of human NEK3.

Host

Rabbit

Reactivity

Human

Form

Liquid

Purification

Protein A purification

Recommend Usage	Western Blot (1:1000) The optimal working dilution should be determined by the end user.
Storage Buffer	In PBS (0.09% sodium azide)
Storage Instruction	Store at 4°C. For long term storage store at -20°C. Aliquot to avoid repeated freezing and thawing.
Note	This product contains sodium azide: a POISONOUS AND HAZARDOUS SUBSTANCE which should be handled by trained staff only.

Applications

- Western Blot (Cell lysate)

Western blot analysis of CEM cell lysate (35 ug/lane) with NEK3 polyclonal antibody (Cat # PAB3285).

- Western Blot (Transfected lysate)

Western blot analysis of NEK3 (arrow) using NEK3 polyclonal antibody (Cat # PAB3285).

293 cell lysates (2 ug/lane) either nontransfected (Lane 1) or transiently transfected with the NEK3 gene (Lane 2).

Gene Info — NEK3

Entrez GeneID	4752
Protein Accession#	NEK3_HUMAN:NP_002489
Gene Name	NEK3
Gene Alias	HSPK36, MGC29949
Gene Description	NIMA (never in mitosis gene a)-related kinase 3
Omim ID	604044
Gene Ontology	Hyperlink
Gene Summary	This gene encodes a member of the NimA (never in mitosis A) family of serine/threonine protein kinases. The encoded protein differs from other NimA family members in that it is not cell cycle regulated and is found primarily in the cytoplasm. The kinase is activated by prolactin stimulation, leading to phosphorylation of VAV2 guanine nucleotide exchange factor, paxillin, and activation of the RAC1 GTPase. Multiple transcript variants encoding different isoforms have been found for this gene
Other Designations	NIMA-related kinase 3 glycogen synthase A kinase hydroxyalkyl-protein kinase phosphorylase B kinase kinase serine/threonine-protein kinase NEK3

Publication Reference

- [Molecular cloning and characterization of the human NIMA-related protein kinase 3 gene \(NEK3\).](#)

Kimura M, Okano Y.

Cytogenetics and Cell Genetics 2001 Dec; 95(3-4):177.

- [Cell cycle-dependent expression of Nek2, a novel human protein kinase related to the NIMA mitotic regulator of Aspergillus nidulans.](#)

Schultz SJ, Fry AM, Sutterlin C, Ried T, Nigg EA.

Cell growth & Differentiation: the Molecular Biology Journal of the American Association for Cancer 1994 Jun; 5(6):625.

- [Identification of 21 novel human protein kinases, including 3 members of a family related to the cell cycle regulator nimA of Aspergillus nidulans.](#)

Schultz SJ, Nigg EA.

Cell Growth & Differentiation 1993 Oct; 4(10):821.

Disease

- [Tobacco Use Disorder](#)