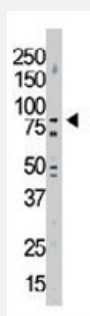


NEK11 polyclonal antibody

Catalog # PAB3280

Size 400 uL

Applications



Western Blot (Tissue lysate)

Western blot analysis of NEK11 polyclonal antibody (Cat # PAB3280) in mouse brain tissue lysate. NEK11 (arrow) was detected using purified polyclonal antibody. Secondary HRP-anti-rabbit was used for signal visualization with chemiluminescence.

Specification

Product Description	Rabbit polyclonal antibody raised against synthetic peptide of NEK11.
Immunogen	A synthetic peptide (conjugated with KLH) corresponding to C-terminus of human NEK11.
Host	Rabbit
Reactivity	Human, Mouse
Form	Liquid
Purification	Protein G purification
Recommend Usage	Western Blot (1:1000) The optimal working dilution should be determined by the end user.
Storage Buffer	In PBS (0.09% sodium azide)
Storage Instruction	Store at 4°C. For long term storage store at -20°C. Aliquot to avoid repeated freezing and thawing.
Note	This product contains sodium azide: a POISONOUS AND HAZARDOUS SUBSTANCE which should be handled by trained staff only.

Applications

- Western Blot (Tissue lysate)

Western blot analysis of NEK11 polyclonal antibody (Cat # PAB3280) in mouse brain tissue lysate. NEK11 (arrow) was detected using purified polyclonal antibody. Secondary HRP-anti-rabbit was used for signal visualization with chemiluminescence.

Gene Info — NEK11

Entrez GeneID [79858](#)

Protein Accession# [Q8NG66](#)

Gene Name NEK11

Gene Alias FLJ23495

Gene Description NIMA (never in mitosis gene a)- related kinase 11

Omim ID [609779](#)

Gene Ontology [Hyperlink](#)

Gene Summary This gene encodes a member of the never in mitosis gene A family of kinases. The encoded protein localizes to the nucleoli, and may function with NEK2A in the S-phase checkpoint. The encoded protein appears to play roles in DNA replication and response to genotoxic stress. Alternatively spliced transcript variants have been described

Other Designations -

Publication Reference

- [Oncogenic kinase signalling.](#)

Blume-Jensen P, Hunter T.

Nature 2001 May; 411(6835):355.

- [Phosphoinositide 3-kinase signalling pathways.](#)

Cantrell DA.

Journal of Cell Science 2001 Apr; 114(Pt 8):1439.

- [The RET proto-oncogene in human cancers.](#)

Jhiang SM.

Oncogene 2000 Nov; 19(49):5590.

Disease

- [Genetic Predisposition to Disease](#)
- [Kidney Failure](#)
- [Tobacco Use Disorder](#)