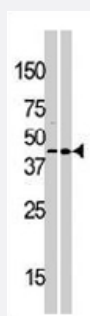


# MOS polyclonal antibody

Catalog # PAB3278

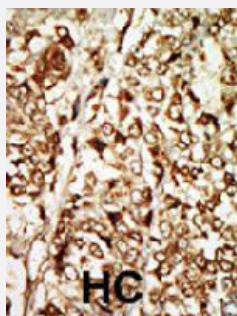
Size 400 uL

## Applications



### Western Blot (Cell lysate)

Western blot analysis of MOS polyclonal antibody (Cat # PAB3278) in 293 (right) and Hela (right) cell line lysate (35 ug/lane). MOS (arrow) was detected using the purified polyclonal antibody (1 : 60 dilution).



### Immunohistochemistry (Formalin/PFA-fixed paraffin-embedded sections)

Formalin-fixed and paraffin-embedded human hepatocellular carcinoma tissue reacted with MOS polyclonal antibody (Cat # PAB3278), which was peroxidase-conjugated to the secondary antibody, followed by AEC staining. This data demonstrates the use of this antibody for immunohistochemistry; clinical relevance has not been evaluated. HC = hepatocarcinoma.

## Specification

<b>Product Description</b>	Rabbit polyclonal antibody raised against synthetic peptide of MOS.
<b>Immunogen</b>	A synthetic peptide (conjugated with KLH) corresponding to N-terminus of human MOS.
<b>Host</b>	Rabbit
<b>Reactivity</b>	Human
<b>Form</b>	Liquid
<b>Purification</b>	Protein G purification

<b>Recommend Usage</b>	Immunohistochemistry (Formalin/PFA-fixed paraffin-embedded sections) (1:50-100) Western Blot (1:1000) The optimal working dilution should be determined by the end user.
<b>Storage Buffer</b>	In PBS (0.09% sodium azide)
<b>Storage Instruction</b>	Store at 4°C. For long term storage store at -20°C. Aliquot to avoid repeated freezing and thawing.
<b>Note</b>	This product contains sodium azide: a POISONOUS AND HAZARDOUS SUBSTANCE which should be handled by trained staff only.

## Applications

- Western Blot (Cell lysate)

Western blot analysis of MOS polyclonal antibody (Cat # PAB3278) in 293 (right) and Hela (right) cell line lysate (35 ug/lane). MOS (arrow) was detected using the purified polyclonal antibody (1 : 60 dilution).

- Immunohistochemistry (Formalin/PFA-fixed paraffin-embedded sections)

Formalin-fixed and paraffin-embedded human hepatocellular carcinoma tissue reacted with MOS polyclonal antibody (Cat # PAB3278), which was peroxidase-conjugated to the secondary antibody, followed by AEC staining. This data demonstrates the use of this antibody for immunohistochemistry; clinical relevance has not been evaluated. HC = hepatocarcinoma.

## Gene Info — MOS

<b>Entrez GeneID</b>	<a href="#">4342</a>
<b>Protein Accession#</b>	<a href="#">P00540;NP_005363</a>
<b>Gene Name</b>	MOS
<b>Gene Alias</b>	MGC119962, MGC119963, MSV
<b>Gene Description</b>	v-mos Moloney murine sarcoma viral oncogene homolog
<b>Omim ID</b>	<a href="#">190060</a>
<b>Gene Ontology</b>	<a href="#">Hyperlink</a>
<b>Gene Summary</b>	MOS is a serine/threonine kinase that activates the MAP kinase cascade through direct phosphorylation of the MAP kinase activator MEK (MAP2K1; MIM 176872) (Prasad et al., 2008 [PubMed 18246541]).[supplied by OMIM]
<b>Other Designations</b>	Oncogene MOS, Moloney murine sarcoma virus

## Publication Reference

- [Mos and the cell cycle.](#)

Singh B, Arlinghaus RB.

Progress in Cell Cycle Research 1997 Jan; 3:251.

- [Human proto-oncogene c-mos maps to 8q11.](#)

Caubet JF, Mathieu-Mahul D, Bernheim A, Larsen CJ, Berger R.

The EMBO Journal 1985 Sep; 4(9):2245.

- [Human DNA sequence homologous to the transforming gene \(mos\) of Moloney murine sarcoma virus.](#)

Watson R, Oskarsson M, Vande Woude GF.

PNAS 1982 Jul; 79(13):4078.

## Pathway

- [MAPK signaling pathway](#)
- [Regulation of actin cytoskeleton](#)

## Disease

- [Diabetes Mellitus](#)
- [Disease Progression](#)
- [Disease Susceptibility](#)
- [HIV Infections](#)