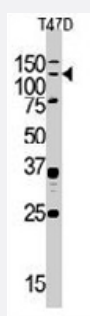


BUB1 polyclonal antibody

Catalog # PAB3262

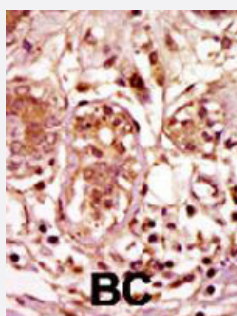
Size 400 uL

Applications



Western Blot (Cell lysate)

Western blot analysis of BUB1 polyclonal antibody (Cat # PAB3262) in T-47D cell line lysate. BUB1 (arrow) was detected using the purified polyclonal antibody.



Immunohistochemistry (Formalin/PFA-fixed paraffin-embedded sections)

Formalin-fixed and paraffin-embedded human cancer tissue reacted with BUB1 polyclonal antibody (Cat # PAB3262), which was peroxidase-conjugated to the secondary antibody, followed by AEC staining. This data demonstrates the use of this antibody for immunohistochemistry; clinical relevance has not been evaluated. BC = breast carcinoma.

Specification

Product Description	Rabbit polyclonal antibody raised against synthetic peptide of BUB1.
Immunogen	A synthetic peptide (conjugated with KLH) corresponding to C-terminus of human BUB1.
Host	Rabbit
Reactivity	Human
Form	Liquid
Purification	Protein G purification

Recommend Usage	Immunohistochemistry (Formalin/PFA-fixed paraffin-embedded sections) (1:50-100) Western Blot (1:1000) The optimal working dilution should be determined by the end user.
Storage Buffer	In PBS (0.09% sodium azide)
Storage Instruction	Store at 4°C. For long term storage store at -20°C. Aliquot to avoid repeated freezing and thawing.
Note	This product contains sodium azide: a POISONOUS AND HAZARDOUS SUBSTANCE which should be handled by trained staff only.

Applications

- Western Blot (Cell lysate)

Western blot analysis of BUB1 polyclonal antibody (Cat # PAB3262) in T-47D cell line lysate. BUB1 (arrow) was detected using the purified polyclonal antibody.

- Immunohistochemistry (Formalin/PFA-fixed paraffin-embedded sections)

Formalin-fixed and paraffin-embedded human cancer tissue reacted with BUB1 polyclonal antibody (Cat # PAB3262), which was peroxidase-conjugated to the secondary antibody, followed by AEC staining. This data demonstrates the use of this antibody for immunohistochemistry; clinical relevance has not been evaluated. BC = breast carcinoma.

Gene Info — BUB1

Entrez GeneID	699
Protein Accession#	O43683
Gene Name	BUB1
Gene Alias	BUB1A, BUB1L, hBUB1
Gene Description	budding uninhibited by benzimidazoles 1 homolog (yeast)
Omim ID	602452
Gene Ontology	Hyperlink
Gene Summary	This gene encodes a kinase involved in spindle checkpoint function. The kinase functions in part by phosphorylating a member of the mitotic checkpoint complex and activating the spindle checkpoint. Mutations in this gene have been associated with aneuploidy and several forms of cancer. [provided by RefSeq]
Other Designations	BUB1 budding uninhibited by benzimidazoles 1 homolog budding uninhibited by benzimidazoles 1 mitotic spindle checkpoint kinase putative serine/threonine-protein kinase

Publication Reference

- [The beta2-adaptin clathrin adaptor interacts with the mitotic checkpoint kinase BubR1.](#)

Cayrol C, Cougoule C, Wright M.

Biochemical and Biophysical Research Communications 2002 Nov; 298(5):720.

- [Genetic and epigenetic inactivation of mitotic checkpoint genes hBUB1 and hBUBR1 and their relationship to survival.](#)

Shichiri M, Yoshinaga K, Hisatomi H, Sugihara K, Hirata Y.

Cancer Research 2002 Jan; 62(1):13.

Pathway

- [Cell cycle](#)

Disease

- [Alcoholism](#)
- [Breast cancer](#)
- [Breast Neoplasms](#)
- [Carcinoma](#)
- [Conduct Disorder](#)
- [Genetic Predisposition to Disease](#)
- [Ovarian Neoplasms](#)