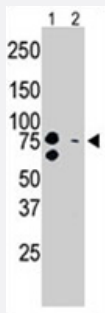


# BRD3 polyclonal antibody

Catalog # PAB3246

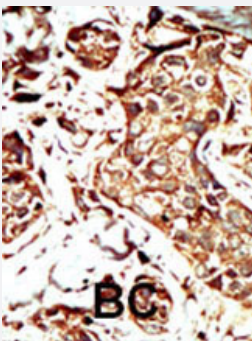
Size 400 uL

## Applications



### Western Blot

The BRD3 polyclonal antibody (Cat # PAB3246) is used in Western blot to detect BRD3 in mouse brain tissue lysate (Lane 1) and Sacs-2 cell lysate.



### Immunohistochemistry (Formalin/PFA-fixed paraffin-embedded sections)

Formalin-fixed and paraffin-embedded human cancer tissue reacted with BRD3 polyclonal antibody (Cat # PAB3246), which was peroxidase-conjugated to the secondary antibody, followed by AEC staining. This data demonstrates the use of this antibody for immunohistochemistry; clinical relevance has not been evaluated. BC = breast carcinoma.

## Specification

<b>Product Description</b>	Rabbit polyclonal antibody raised against synthetic peptide of BRD3.
<b>Immunogen</b>	A synthetic peptide (conjugated with KLH) corresponding to C-terminus of human BRD3.
<b>Host</b>	Rabbit
<b>Reactivity</b>	Human, Mouse
<b>Form</b>	Liquid
<b>Purification</b>	Protein G purification

<b>Recommend Usage</b>	Immunohistochemistry (Formalin/PFA-fixed paraffin-embedded sections) (1:50-100) Western Blot (1:1000) The optimal working dilution should be determined by the end user.
<b>Storage Buffer</b>	In PBS (0.09% sodium azide)
<b>Storage Instruction</b>	Store at 4°C. For long term storage store at -20°C. Aliquot to avoid repeated freezing and thawing.
<b>Note</b>	This product contains sodium azide: a POISONOUS AND HAZARDOUS SUBSTANCE which should be handled by trained staff only.

## Applications

- Western Blot

The BRD3 polyclonal antibody (Cat # PAB3246) is used in Western blot to detect BRD3 in mouse brain tissue lysate (Lane 1) and Sacs-2 cell lysate.

- Immunohistochemistry (Formalin/PFA-fixed paraffin-embedded sections)

Formalin-fixed and paraffin-embedded human cancer tissue reacted with BRD3 polyclonal antibody (Cat # PAB3246), which was peroxidase-conjugated to the secondary antibody, followed by AEC staining. This data demonstrates the use of this antibody for immunohistochemistry; clinical relevance has not been evaluated. BC = breast carcinoma.

## Gene Info — BRD3

<b>Entrez GeneID</b>	<a href="#">8019</a>
<b>Protein Accession#</b>	<a href="#">Q15059</a>
<b>Gene Name</b>	BRD3
<b>Gene Alias</b>	FLJ23227, FLJ41328, KIAA0043, ORFX, RING3L
<b>Gene Description</b>	bromodomain containing 3
<b>Omim ID</b>	<a href="#">601541</a>
<b>Gene Ontology</b>	<a href="#">Hyperlink</a>
<b>Gene Summary</b>	This gene was identified based on its homology to the gene encoding the RING3 protein, a serine /threonine kinase. The gene localizes to 9q34, a region which contains several major histocompatibility complex (MHC) genes. The function of the encoded protein is not known. [provided by RefSeq]
<b>Other Designations</b>	OTTHUMP00000022724 RING3-like bromodomain containing protein 3 bromodomain-containing 3

## Publication Reference

- [Chromosomal localization, gene structure and transcription pattern of the ORFX gene, a homologue of the MHC-linked RING3 gene.](#)

Thorpe KL, Gorman P, Thomas C, Sheer D, Trowsdale J, Beck S.

Gene 1997 Oct; 200(1-2):177.

- [Phylogeny and structure of the RING3 gene.](#)

Thorpe KL, Abdulla S, Kaufman J, Trowsdale J, Beck S.

Immunogenetics 1996 Sep; 44(5):391.