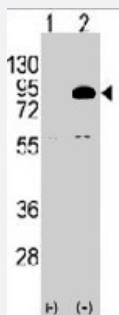


# PIK3R2 polyclonal antibody

Catalog # PAB3225

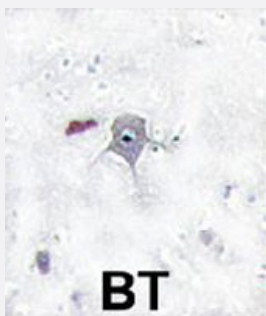
Size 400 uL

## Applications



### Western Blot (Transfected lysate)

Western blot analysis of PIK3R2 polyclonal antibody (Cat # PAB3225) (arrow). 293 cell lysates (2 ug/lane) either nontransfected (Lane 1) or transiently transfected with the PIK3R2 gene (Lane 2) (Origene Technologies).



### Immunohistochemistry (Formalin/PFA-fixed paraffin-embedded sections)

Formalin-fixed and paraffin-embedded human brain tissue reacted with PIK3R2 polyclonal antibody (Cat # PAB3225), which was peroxidase-conjugated to the secondary antibody, followed by DAB staining. This data demonstrates the use of this antibody for immunohistochemistry; clinical relevance has not been evaluated.

## Specification

<b>Product Description</b>	Rabbit polyclonal antibody raised against synthetic peptide of PIK3R2.
<b>Immunogen</b>	A synthetic peptide (conjugated with KLH) corresponding to N-terminus of human PIK3R2.
<b>Host</b>	Rabbit
<b>Reactivity</b>	Human
<b>Form</b>	Liquid
<b>Purification</b>	Protein A purification

<b>Recommend Usage</b>	Immunohistochemistry (Formalin/PFA-fixed paraffin-embedded sections) (1:50-100) Western Blot (1:1000) The optimal working dilution should be determined by the end user.
<b>Storage Buffer</b>	In PBS (0.09% sodium azide)
<b>Storage Instruction</b>	Store at 4°C. For long term storage store at -20°C. Aliquot to avoid repeated freezing and thawing.
<b>Note</b>	This product contains sodium azide: a POISONOUS AND HAZARDOUS SUBSTANCE which should be handled by trained staff only.

## Applications

- Western Blot (Transfected lysate)

Western blot analysis of PIK3R2 polyclonal antibody (Cat # PAB3225) (arrow). 293 cell lysates (2 ug/lane) either nontransfected (Lane 1) or transiently transfected with the PIK3R2 gene (Lane 2) (Origene Technologies).

- Immunohistochemistry (Formalin/PFA-fixed paraffin-embedded sections)

Formalin-fixed and paraffin-embedded human brain tissue reacted with PIK3R2 polyclonal antibody (Cat # PAB3225), which was peroxidase-conjugated to the secondary antibody, followed by DAB staining. This data demonstrates the use of this antibody for immunohistochemistry; clinical relevance has not been evaluated.

## Gene Info — PIK3R2

<b>Entrez GeneID</b>	<a href="#">5296</a>
<b>Protein Accession#</b>	<a href="#">NP_005018;O00459</a>
<b>Gene Name</b>	PIK3R2
<b>Gene Alias</b>	P85B, p85, p85-BETA
<b>Gene Description</b>	phosphoinositide-3-kinase, regulatory subunit 2 (beta)
<b>Omim ID</b>	<a href="#">603157</a>
<b>Gene Ontology</b>	<a href="#">Hyperlink</a>
<b>Gene Summary</b>	O
<b>Other Designations</b>	phosphatidylinositol 3-kinase, regulatory subunit, polypeptide 2 (p85 beta) phosphoinositide-3-kinase, regulatory subunit 2 (p85 beta) phosphoinositide-3-kinase, regulatory subunit, polypeptide 2 (p85 beta)

## Publication Reference

- [Human immunodeficiency virus type 1 tat-mediated cytotoxicity of human brain microvascular endothelial cells.](#)

Khan NA, Di Cello F, Nath A, Kim KS.

Journal of Neurovirology 2003 Dec; 9(6):584.

- [Recruitment of phosphatidylinositol 3-kinase to CD28 inhibits HIV transcription by a Tat-dependent mechanism.](#)

Cook JA, August A, Henderson AJ.

Journal of Immunology 2002 Jul; 169(1):254.

- [HIV-1-Tat protein activates phosphatidylinositol 3-kinase/ AKT-dependent survival pathways in Kaposi's sarcoma cells.](#)

Deregibus MC, Cantaluppi V, Doublier S, Brizzi MF, Deambrosis I, Albini A, Camussi G.

The Journal of Biological Chemistry 2002 May; 277(28):25195.

## Pathway

- [Acute myeloid leukemia](#)
- [Apoptosis](#)
- [B cell receptor signaling pathway](#)
- [Chemokine signaling pathway](#)
- [Chronic myeloid leukemia](#)
- [Colorectal cancer](#)
- [Endometrial cancer](#)
- [ErbB signaling pathway](#)
- [Fc epsilon RI signaling pathway](#)
- [Fc gamma R-mediated phagocytosis](#)
- [Focal adhesion](#)
- [Glioma](#)
- [Insulin signaling pathway](#)

- [Jak-STAT signaling pathway](#)
- [Leukocyte transendothelial migration](#)
- [Melanoma](#)
- [mTOR signaling pathway](#)
- [Natural killer cell mediated cytotoxicity](#)
- [Neurotrophin signaling pathway](#)
- [Non-small cell lung cancer](#)
- [Pancreatic cancer](#)
- [Pathways in cancer](#)
- [Phosphatidylinositol signaling system](#)
- [Prostate cancer](#)
- [Regulation of actin cytoskeleton](#)
- [Renal cell carcinoma](#)
- [Small cell lung cancer](#)
- [T cell receptor signaling pathway](#)
- [Toll-like receptor signaling pathway](#)
- [Type II diabetes mellitus](#)
- [VEGF signaling pathway](#)