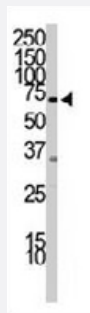


PIK3R2 polyclonal antibody

Catalog # PAB3222

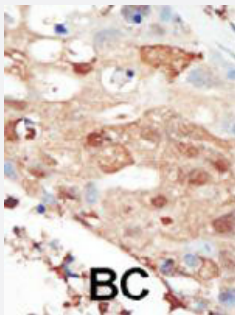
Size 400 uL

Applications



Western Blot (Cell lysate)

Western blot analysis of PIK3R2 polyclonal antibody (Cat # PAB3222) in A-549 cell lysate. PIK3R2 (arrow) was detected using purified polyclonal antibody. Secondary HRP-anti-rabbit was used for signal visualization with chemiluminescence.



Immunohistochemistry (Formalin/PFA-fixed paraffin-embedded sections)

Formalin-fixed and paraffin-embedded human cancer tissue reacted with PIK3R2 polyclonal antibody (Cat # PAB3222), which was peroxidase-conjugated to the secondary antibody, followed by AEC staining. This data demonstrates the use of this antibody for immunohistochemistry; clinical relevance has not been evaluated. BC = breast carcinoma.

Specification

Product Description	Rabbit polyclonal antibody raised against synthetic peptide of PIK3R2.
Immunogen	A synthetic peptide (conjugated with KLH) corresponding to C-terminus of human PIK3R2.
Host	Rabbit
Reactivity	Human
Form	Liquid
Purification	Protein G purification

Recommend Usage	Immunohistochemistry (Formalin/PFA-fixed paraffin-embedded sections) (1:50-100) Western Blot (1:1000) The optimal working dilution should be determined by the end user.
Storage Buffer	In PBS (0.09% sodium azide)
Storage Instruction	Store at 4°C. For long term storage store at -20°C. Aliquot to avoid repeated freezing and thawing.
Note	This product contains sodium azide: a POISONOUS AND HAZARDOUS SUBSTANCE which should be handled by trained staff only.

Applications

- Western Blot (Cell lysate)

Western blot analysis of PIK3R2 polyclonal antibody (Cat # PAB3222) in A-549 cell lysate. PIK3R2 (arrow) was detected using purified polyclonal antibody. Secondary HRP-anti-rabbit was used for signal visualization with chemiluminescence.

- Immunohistochemistry (Formalin/PFA-fixed paraffin-embedded sections)

Formalin-fixed and paraffin-embedded human cancer tissue reacted with PIK3R2 polyclonal antibody (Cat # PAB3222), which was peroxidase-conjugated to the secondary antibody, followed by AEC staining. This data demonstrates the use of this antibody for immunohistochemistry; clinical relevance has not been evaluated. BC = breast carcinoma.

Gene Info — PIK3R2

Entrez GeneID	5296
Protein Accession#	O00459
Gene Name	PIK3R2
Gene Alias	P85B, p85, p85-BETA
Gene Description	phosphoinositide-3-kinase, regulatory subunit 2 (beta)
Omim ID	603157
Gene Ontology	Hyperlink
Gene Summary	O
Other Designations	phosphatidylinositol 3-kinase, regulatory subunit, polypeptide 2 (p85 beta) phosphoinositide-3-kinase, regulatory subunit 2 (p85 beta) phosphoinositide-3-kinase, regulatory subunit, polypeptide 2 (p85 beta)

Publication Reference

- [An oncogenic fusion product of the phosphatidylinositol 3-kinase p85beta subunit and HUMORF8, a putative deubiquitinating enzyme.](#)

Janssen JW, Schleithoff L, Bartram CR, Schulz AS.

Oncogene 1998 Apr; 16(13):1767.

- [Chromosomal localization of human p85 alpha, a subunit of phosphatidylinositol 3-kinase, and its homologue p85 beta.](#)

Volinia S, Patracchini P, Otsu M, Hiles I, Gout I, Calzolari E, Bernardi F, Rooke L, Waterfield MD.

Oncogene 1992 Apr; 7(4).

- [Purification and characterization of phosphoinositide 3-kinase from rat liver.](#)

Carpenter CL, Duckworth BC, Auger KR, Cohen B, Schaffhausen BS, Cantley LC.

The Journal of Biological Chemistry 1990 Nov; 265(32):19704.

Pathway

- [Acute myeloid leukemia](#)
- [Apoptosis](#)
- [B cell receptor signaling pathway](#)
- [Chemokine signaling pathway](#)
- [Chronic myeloid leukemia](#)
- [Colorectal cancer](#)
- [Endometrial cancer](#)
- [ErbB signaling pathway](#)
- [Fc epsilon RI signaling pathway](#)
- [Fc gamma R-mediated phagocytosis](#)
- [Focal adhesion](#)
- [Glioma](#)
- [Insulin signaling pathway](#)

- [Jak-STAT signaling pathway](#)
- [Leukocyte transendothelial migration](#)
- [Melanoma](#)
- [mTOR signaling pathway](#)
- [Natural killer cell mediated cytotoxicity](#)
- [Neurotrophin signaling pathway](#)
- [Non-small cell lung cancer](#)
- [Pancreatic cancer](#)
- [Pathways in cancer](#)
- [Phosphatidylinositol signaling system](#)
- [Prostate cancer](#)
- [Regulation of actin cytoskeleton](#)
- [Renal cell carcinoma](#)
- [Small cell lung cancer](#)
- [T cell receptor signaling pathway](#)
- [Toll-like receptor signaling pathway](#)
- [Type II diabetes mellitus](#)
- [VEGF signaling pathway](#)