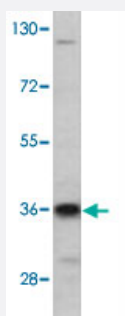


LDLRAP1 polyclonal antibody

Catalog # PAB3210

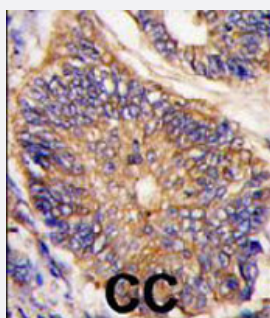
Size 400 uL

Applications



Western Blot (Cell lysate)

Western blot analysis of K-562 cell lysate (35 ug/lane) with LDLRAP1 polyclonal antibody (Cat # PAB3210).



Immunohistochemistry (Formalin/PFA-fixed paraffin-embedded sections)

Formalin-fixed and paraffin-embedded human colon carcinoma tissue reacted with LDLRAP1 polyclonal antibody (Cat # PAB3210), which was peroxidase-conjugated to the secondary antibody, followed by DAB staining. This data demonstrates the use of this antibody for immunohistochemistry; clinical relevance has not been evaluated.

Specification

Product Description	Rabbit polyclonal antibody raised against synthetic peptide of LDLRAP1.
Immunogen	A synthetic peptide (conjugated with KLH) corresponding to N-terminus of human LDLRAP1.
Host	Rabbit
Reactivity	Human
Form	Liquid
Purification	Protein A purification

Recommend Usage	Immunohistochemistry (Formalin/PFA-fixed paraffin-embedded sections) (1:10-50) Western Blot (1:1000) The optimal working dilution should be determined by the end user.
Storage Buffer	In PBS (0.09% sodium azide)
Storage Instruction	Store at 4°C. For long term storage store at -20°C. Aliquot to avoid repeated freezing and thawing.
Note	This product contains sodium azide: a POISONOUS AND HAZARDOUS SUBSTANCE which should be handled by trained staff only.

Applications

- Western Blot (Cell lysate)

Western blot analysis of K-562 cell lysate (35 ug/lane) with LDLRAP1 polyclonal antibody (Cat # PAB3210).

- Immunohistochemistry (Formalin/PFA-fixed paraffin-embedded sections)

Formalin-fixed and paraffin-embedded human colon carcinoma tissue reacted with LDLRAP1 polyclonal antibody (Cat # PAB3210), which was peroxidase-conjugated to the secondary antibody, followed by DAB staining. This data demonstrates the use of this antibody for immunohistochemistry; clinical relevance has not been evaluated.

Gene Info — LDLRAP1

Entrez GeneID	26119
Protein Accession#	NP_056442:Q5SW96
Gene Name	LDLRAP1
Gene Alias	ARH, ARH1, ARH2, DKFZp586D0624, FHCB1, FHCB2, MGC34705
Gene Description	low density lipoprotein receptor adaptor protein 1
Omim ID	603813 605747
Gene Ontology	Hyperlink
Gene Summary	The protein encoded by this gene is a cytosolic protein which contains a phosphotyrosine binding (PTD) domain. The PTD domain has been found to interact with the cytoplasmic tail of the LDL receptor. Mutations in this gene lead to LDL receptor malfunction and cause the disorder autosomal recessive hypercholesterolaemia. [provided by RefSeq]
Other Designations	LDL receptor adaptor protein OTTHUMP00000008526 autosomal recessive hypercholesterolemia protein

Publication Reference

- [The adaptor protein Dab2 sorts LDL receptors into coated pits independently of AP-2 and ARH.](#)

Maurer ME, Cooper JA.

Journal of Cell Science 2006 Oct; 119(Pt 20):4235.

Application: WB-Tr, Human, HeLa cells

- [A single common portal for clathrin-mediated endocytosis of distinct cargo governed by cargo-selective adaptors.](#)

Keyel PA, Mishra SK, Roth R, Heuser JE, Watkins SC, Traub LM.

Molecular Biology of the Cell 2006 Oct; 17(10):4300.

Pathway

- [Endocytosis](#)

Disease

- [Atherosclerosis](#)
- [Cardiovascular Diseases](#)
- [Diabetes Mellitus](#)
- [Edema](#)
- [Genetic Predisposition to Disease](#)
- [Hypercholesterolemia](#)
- [Myocardial Infarction](#)