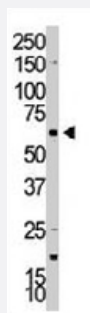


# RPS6KB2 polyclonal antibody

Catalog # PAB3203

Size 400 uL

## Applications



### Western Blot (Cell lysate)

Western blot analysis of RPS6KB2 polyclonal antibody (Cat # PAB3203) in A-375 cell lysate. RPS6KB2 (arrow) was detected using purified polyclonal antibody. Secondary HRP-anti-rabbit was used for signal visualization with chemiluminescence.

## Specification

<b>Product Description</b>	Rabbit polyclonal antibody raised against synthetic peptide of RPS6KB2.
<b>Immunogen</b>	A synthetic peptide (conjugated with KLH) corresponding to C-terminus of human RPS6KB2.
<b>Host</b>	Rabbit
<b>Reactivity</b>	Human
<b>Form</b>	Liquid
<b>Purification</b>	Protein G purification
<b>Recommend Usage</b>	Western Blot (1:1000) The optimal working dilution should be determined by the end user.
<b>Storage Buffer</b>	In PBS (0.09% sodium azide)
<b>Storage Instruction</b>	Store at 4°C. For long term storage store at -20°C. Aliquot to avoid repeated freezing and thawing.
<b>Note</b>	This product contains sodium azide: a POISONOUS AND HAZARDOUS SUBSTANCE which should be handled by trained staff only.

## Applications

- Western Blot (Cell lysate)

Western blot analysis of RPS6KB2 polyclonal antibody (Cat # PAB3203) in A-375 cell lysate. RPS6KB2 (arrow) was detected using purified polyclonal antibody. Secondary HRP-anti-rabbit was used for signal visualization with chemiluminescence.

## Gene Info — RPS6KB2

Entrez GeneID	<a href="#">6199</a>
Protein Accession#	<a href="#">NP_001007072;Q9UBS0</a>
Gene Name	RPS6KB2
Gene Alias	KLS, P70-beta, P70-beta-1, P70-beta-2, S6K-beta2, S6K2, SRK, STK14B, p70(S6K)-beta, p70 S6Kb
Gene Description	ribosomal protein S6 kinase, 70kDa, polypeptide 2
Omim ID	<a href="#">608939</a>
Gene Ontology	<a href="#">Hyperlink</a>
Gene Summary	This gene encodes a member of the RSK (ribosomal S6 kinase) family of serine/threonine kinase s. This kinase contains 2 nonidentical kinase catalytic domains and phosphorylates the S6 ribosomal protein and eucaryotic translation initiation factor 4B (eIF4B). Phosphorylation of S6 leads to an increase in protein synthesis and cell proliferation. [provided by RefSeq]
Other Designations	S6 kinase-related kinase p70 ribosomal S6 kinase beta ribosomal protein S6 kinase, 70kD, polypeptide 2 serine/threonine-protein kinase 14 beta

## Publication Reference

- [S6 kinase 2 potentiates interleukin-3-driven cell proliferation.](#)

Cruz R, Hedden L, Boyer D, Kharas MG, Fruman DA, Lee-Fruman KK.

Journal of Leukocyte Biology 2005 Oct; 78(6):1378.

## Pathway

- [Acute myeloid leukemia](#)

- [ErbB signaling pathway](#)
- [Fc gamma R-mediated phagocytosis](#)
- [Insulin signaling pathway](#)
- [mTOR signaling pathway](#)
- [TGF-beta signaling pathway](#)

## Disease

- [Head and Neck Neoplasms](#)
- [Neoplasm Recurrence](#)
- [Neoplasms](#)