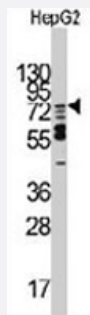


MARK2 polyclonal antibody

Catalog # PAB3195

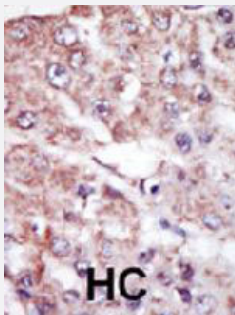
Size 400 uL

Applications



Western Blot (Cell lysate)

Western blot analysis of MARK2 polyclonal antibody (Cat # PAB3195) in HepG2 cell line lysates. MARK2 (arrow) was detected using the purified polyclonal antibody.



Immunohistochemistry (Formalin/PFA-fixed paraffin-embedded sections)

Formalin-fixed and paraffin-embedded human hepatocellular carcinoma tissue reacted with MARK2 polyclonal antibody (Cat # PAB3195), which was peroxidase-conjugated to the secondary antibody, followed by AEC staining. This data demonstrates the use of this antibody for immunohistochemistry; clinical relevance has not been evaluated. HC = hepatocarcinoma.

Specification

Product Description	Rabbit polyclonal antibody raised against synthetic peptide of MARK2.
Immunogen	A synthetic peptide (conjugated with KLH) corresponding to C-terminus of human MARK2.
Host	Rabbit
Reactivity	Human, Mouse
Form	Liquid
Purification	Protein G purification

Recommend Usage	Immunohistochemistry (Formalin/PFA-fixed paraffin-embedded sections) (1:50-100) Western Blot (1:1000) The optimal working dilution should be determined by the end user.
Storage Buffer	In PBS (0.09% sodium azide)
Storage Instruction	Store at 4°C. For long term storage store at -20°C. Aliquot to avoid repeated freezing and thawing.
Note	This product contains sodium azide: a POISONOUS AND HAZARDOUS SUBSTANCE which should be handled by trained staff only.

Applications

- Western Blot (Cell lysate)

Western blot analysis of MARK2 polyclonal antibody (Cat # PAB3195) in HepG2 cell line lysates. MARK2 (arrow) was detected using the purified polyclonal antibody.

- Immunohistochemistry (Formalin/PFA-fixed paraffin-embedded sections)

Formalin-fixed and paraffin-embedded human hepatocellular carcinoma tissue reacted with MARK2 polyclonal antibody (Cat # PAB3195), which was peroxidase-conjugated to the secondary antibody, followed by AEC staining. This data demonstrates the use of this antibody for immunohistochemistry; clinical relevance has not been evaluated. HC = hepatocarcinoma.

Gene Info — MARK2

Entrez GeneID	2011
Protein Accession#	Q15524
Gene Name	MARK2
Gene Alias	EMK1, MGC99619, PAR-1, Par1b
Gene Description	MAP/microtubule affinity-regulating kinase 2
Omim ID	600526
Gene Ontology	Hyperlink
Gene Summary	This gene encodes a member of the Par-1 family of serine/threonine protein kinases. The protein is an important regulator of cell polarity in epithelial and neuronal cells, and also controls the stability of microtubules through phosphorylation and inactivation of several microtubule-associated proteins. The protein localizes to cell membranes. Multiple transcript variants encoding different isoforms have been found for this gene. [provided by RefSeq]

Other Designations

ELKL motif kinase 1|Ser/Thr protein kinase PAR-1B|protein-serine/threonine kinase|serine/threonine kinase

Publication Reference

- [Oncogenic kinase signalling.](#)

Blume-Jensen P, Hunter T.

Nature 2001 May; 411(6835):355.

- [Phosphoinositide 3-kinase signalling pathways.](#)

Cantrell DA.

Journal of Cell Science 2001 Apr; 114(Pt 8):1439.

- [The RET proto-oncogene in human cancers.](#)

Jiang SM.

Oncogene 2000 Nov; 19(49):5590.

Disease

- [Coronary Artery Disease](#)