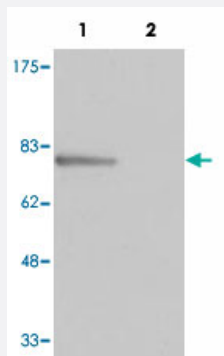


PRKG2 polyclonal antibody

Catalog # PAB3193

Size 400 uL

Applications

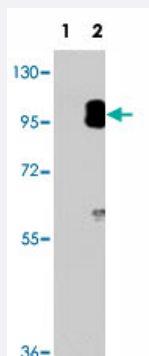


Western Blot (Cell lysate)

Western blot analysis of MC3T3-E1 cell lysate with PRKG2 polyclonal antibody (Cat # PAB3193).

Lane 1, membrane extracts.

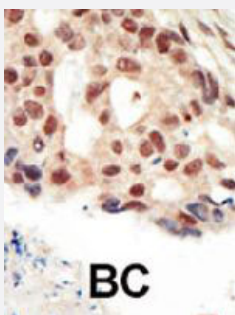
Lane 2, cytosol extracts.



Western Blot (Transfected lysate)

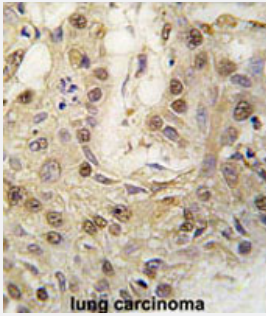
Western blot analysis of PRKG2 (arrow) using PRKG2 polyclonal antibody (Cat # PAB3193).

293 cell lysates (2 ug/lane) either nontransfected (Lane 1) or transiently transfected with the PRKG2 gene (Lane 2).



Immunohistochemistry (Formalin/PFA-fixed paraffin-embedded sections)

Formalin-fixed and paraffin-embedded human cancer tissue reacted with PRKG2 polyclonal antibody (Cat # PAB3193), which was peroxidase-conjugated to the secondary antibody, followed by AEC staining. This data demonstrates the use of this antibody for immunohistochemistry; clinical relevance has not been evaluated. BC = breast carcinoma.



Immunohistochemistry (Formalin/PFA-fixed paraffin-embedded sections)

Formalin-fixed and paraffin-embedded human lung carcinoma reacted with PRKG2 polyclonal antibody (Cat # PAB3193), which was peroxidase-conjugated to the secondary antibody, followed by AEC staining. This data demonstrates the use of this antibody for immunohistochemistry; clinical relevance has not been evaluated.

Specification

Product Description	Rabbit polyclonal antibody raised against synthetic peptide of PRKG2.
Immunogen	A synthetic peptide (conjugated with KLH) corresponding to C-terminus of human PRKG2.
Host	Rabbit
Reactivity	Human
Form	Liquid
Purification	Protein G purification
Recommend Usage	Immunohistochemistry (Formalin/PFA-fixed paraffin-embedded sections) (1:50-100) Western Blot (1:1000) The optimal working dilution should be determined by the end user.
Storage Buffer	In PBS (0.09% sodium azide)
Storage Instruction	Store at 4°C. For long term storage store at -20°C. Aliquot to avoid repeated freezing and thawing.
Note	This product contains sodium azide: a POISONOUS AND HAZARDOUS SUBSTANCE which should be handled by trained staff only.

Applications

- Western Blot (Cell lysate)

Western blot analysis of MC3T3-E1 cell lysate with PRKG2 polyclonal antibody (Cat # PAB3193).
Lane 1, membrane extracts.
Lane 2, cytosol extracts.

- Western Blot (Transfected lysate)

Western blot analysis of PRKG2 (arrow) using PRKG2 polyclonal antibody (Cat # PAB3193).
293 cell lysates (2 ug/lane) either nontransfected (Lane 1) or transiently transfected with the PRKG2 gene (Lane 2).

- Immunohistochemistry (Formalin/PFA-fixed paraffin-embedded sections)

Formalin-fixed and paraffin-embedded human cancer tissue reacted with PRKG2 polyclonal antibody (Cat # PAB3193) , which was peroxidase-conjugated to the secondary antibody, followed by AEC staining. This data demonstrates the use of this antibody for immunohistochemistry; clinical relevance has not been evaluated. BC = breast carcinoma.

- Immunohistochemistry (Formalin/PFA-fixed paraffin-embedded sections)

Formalin-fixed and paraffin-embedded human lung carcinoma reacted with PRKG2 polyclonal antibody (Cat # PAB3193), which was peroxidase-conjugated to the secondary antibody, followed by AEC staining.
This data demonstrates the use of this antibody for immunohistochemistry; clinical relevance has not been evaluated.

Gene Info — PRKG2

Entrez GeneID [5593](#)

Protein Accession# [Q13237](#)

Gene Name PRKG2

Gene Alias PRKGR2, cGKII

Gene Description protein kinase, cGMP-dependent, type II

Omim ID [601591](#)

Gene Ontology [Hyperlink](#)

Gene Summary cGMP-dependent

Other Designations OTTHUMP00000160807

Publication Reference

- [Autophosphorylation of cGMP-dependent protein kinase type II.](#)

Vaandrager AB, Hogema BM, Edixhoven M, van den Burg CM, Bot AG, Klatt P, Ruth P, Hofmann F, Van Damme J, Vandekerckhove J, de Jonge HR.

The Journal of Biological Chemistry 2003 May; 278(31):28651.

Application: WB, Spodoptera frugiperda, Sf9 cells

- [Inhibition of cGMP-dependent protein kinase II by its own splice isoform.](#)

Gambaryan S, Palmetshofer A, Glazova M, Smolenski A, Kristjansson GI, Zimmer M, Lohmann SM.

Biochemical and Biophysical Research Communications 2002 May; 293(5):1438.

Application: IF, WB-Tr, Mouse, NIH/3T3, PtK2 cells

- [Molecular cloning, cDNA structure, and chromosomal localization of the human type II cGMP-dependent protein kinase.](#)

Orstavik S, Solberg R, Tasken K, Nordahl M, Altherr MR, Hansson V, Jahnsen T, Sandberg M.

Biochemical and Biophysical Research Communications 1996 Mar; 220(3):759.

Pathway

- [Gap junction](#)
- [Long-term depression](#)
- [Olfactory transduction](#)

Disease

- [Alcoholism](#)
- [Genetic Predisposition to Disease](#)
- [Gout](#)
- [Tobacco Use Disorder](#)