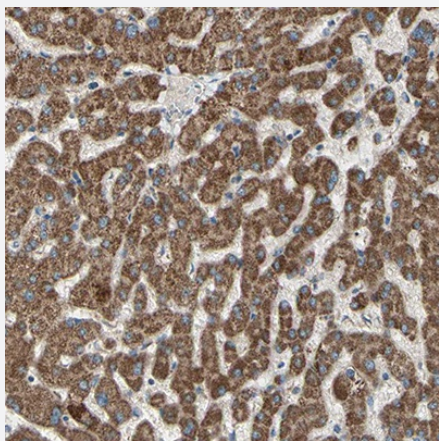


RHOT1 polyclonal antibody

Catalog # PAB31832

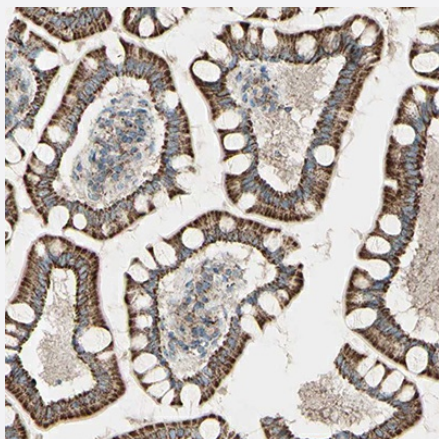
Size 100 uL

Applications



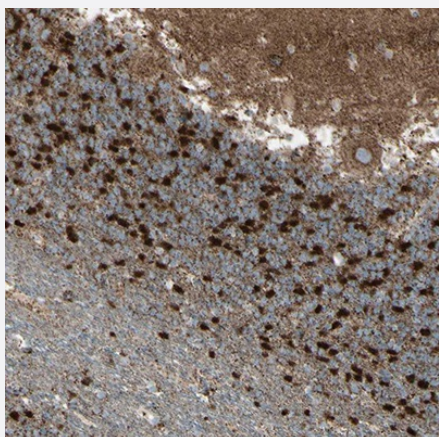
Immunohistochemistry

Immunohistochemical staining of human liver shows positivity in hepatocytes.



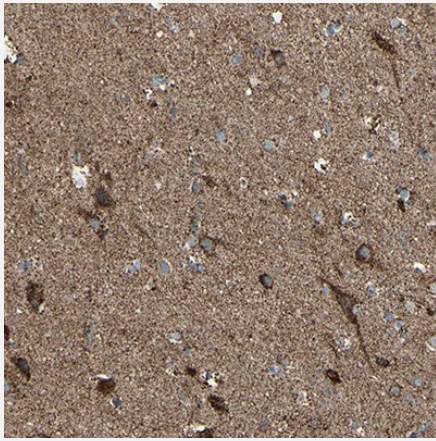
Immunohistochemistry

Immunohistochemical staining of human small intestine shows positivity in glandular cells.



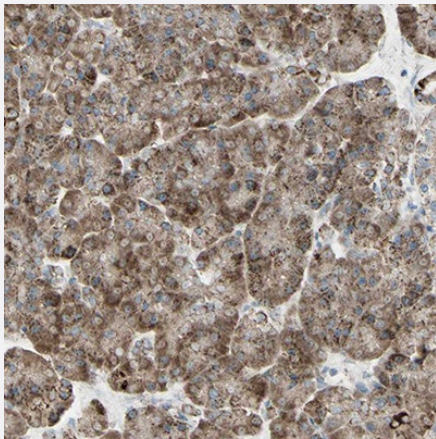
Immunohistochemistry

Immunohistochemical staining of human cerebellum shows positivity in neuronal cells.



Immunohistochemistry

Immunohistochemical staining of human cerebral cortex shows positivity in neuronal cells.



Immunohistochemistry

Immunohistochemical staining of human pancreas shows positivity in exocrine glandular cells.

Specification

Product Description	Rabbit polyclonal antibody raised against recombinant human RHOT1.
Sequence	THVDYSEAEQSDEQLHQEISQANVICIVAVNNKHSIDKVTSRWIPLIN ERTDKDSRLPLILVGNKS DLVEYSSMETILPIMNQYTEIE
Host	Rabbit
Reactivity	Human
Specificity	This antibody reacts to RHOT1.
Form	Liquid
Purification	Affinity purification
Isotype	IgG
Recommend Usage	Immunohistochemistry (1:200 - 1:500) The optimal working dilution should be determined by the end user.

Storage Buffer	In PBS, pH7.2 (40% glycerol, 0.02% sodium azide).
Storage Instruction	Store at 4°C. For long term storage store at -20°C. Aliquot to avoid repeated freezing and thawing.
Note	This product contains sodium azide: a POISONOUS AND HAZARDOUS SUBSTANCE which should be handled by trained staff only.

Applications

- Immunohistochemistry

Immunohistochemical staining of human liver shows positivity in hepatocytes.

- Immunohistochemistry

Immunohistochemical staining of human small intestine shows positivity in glandular cells.

- Immunohistochemistry

Immunohistochemical staining of human cerebellum shows positivity in neuronal cells.

- Immunohistochemistry

Immunohistochemical staining of human cerebral cortex shows positivity in neuronal cells.

- Immunohistochemistry

Immunohistochemical staining of human pancreas shows positivity in exocrine glandular cells.

Gene Info — RHOT1

Entrez GeneID	55288
Gene Name	RHOT1
Gene Alias	ARHT1, FLJ11040, FLJ12633, MIRO-1
Gene Description	ras homolog gene family, member T1
Gene Ontology	Hyperlink
Gene Summary	O
Other Designations	mitochondrial Rho 1 rac-GTP binding protein-like protein

Disease

- [Tobacco Use Disorder](#)