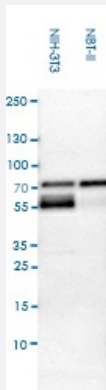


WWTR1 polyclonal antibody

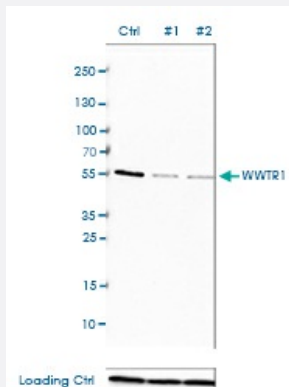
Catalog # PAB31829 Size 100 uL

Applications



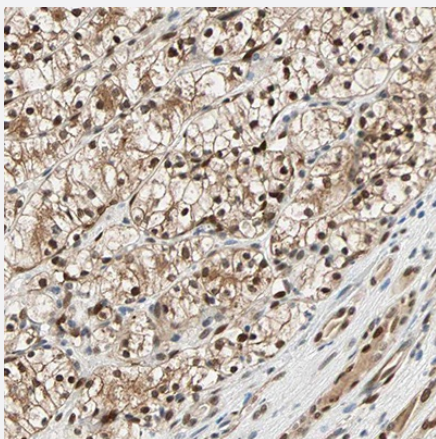
Western Blot (Cell lysate)

Western blot analysis of mouse cell line NIH-3T3 and rat cell line NBT-II.



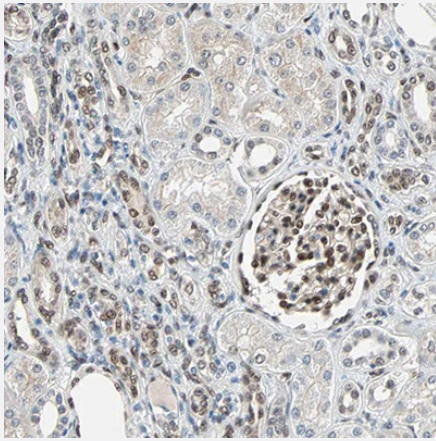
Western Blot (Transfected lysate)

Western blot analysis of EFO-21 cells transfected with control siRNA, target specific siRNA probe #1 and #2, using WWTR1 polyclonal antibody (Cat # PAB31829). Loading control: Anti-PPIB



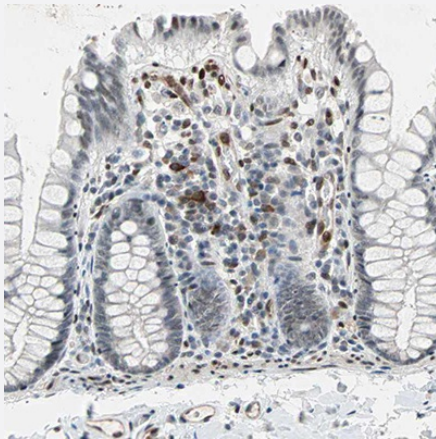
Immunohistochemistry

Immunohistochemical staining of human renal cancer shows strong nuclear positivity in tumor cells.



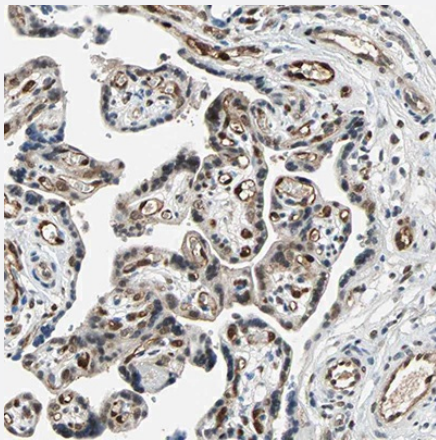
Immunohistochemistry

Immunohistochemical staining of human kidney shows moderate nuclear positivity in glomerular cells and a subset of cells in distal tubules.



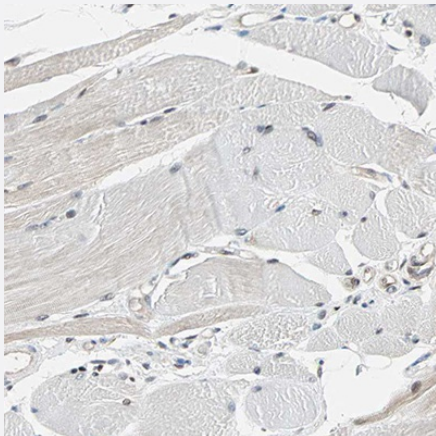
Immunohistochemistry

Immunohistochemical staining of human colon shows strong nuclear positivity in a subset of lymphoid cells.



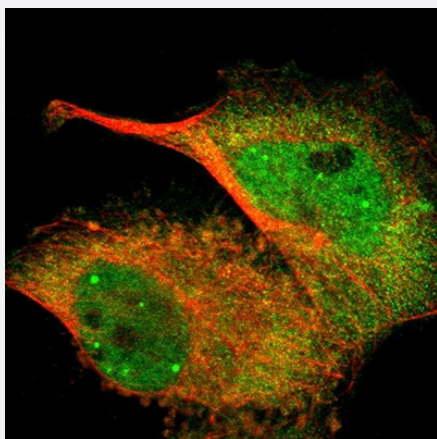
Immunohistochemistry

Immunohistochemical staining of human placenta shows strong nuclear positivity in endothelial cells.



Immunohistochemistry

Immunohistochemical staining of human skeletal muscle shows weak positivity in myocytes.



Immunofluorescence

Immunofluorescent staining of human cell line U-251 MG shows localization to nucleoplasm, nuclear bodies and cytosol.

Specification

Product Description	Rabbit polyclonal antibody raised against recombinant human WWTR1.
Sequence	MNPKPSSWRKKILPESFFKEPD SGSHSRQSSTDSSGGHPGPRLAGGAQHVRSHSSPASLQLGT GAGAAGSPAQQHAHLRQQSYDVTDELPLPPGWEMTFTATGQRYFLNHIEKITTWQDPRKAMNQP LNHMLNHPAVSST
Host	Rabbit
Reactivity	Human, Mouse, Rat
Specificity	This antibody reacts to WWTR1.
Form	Liquid
Purification	Affinity purification
Isotype	IgG
Recommend Usage	Immunofluorescence (0.25-2 ug/mL) Immunohistochemistry (1:200 - 1:500) Western Blot (0.04-0.4 ug/mL) The optimal working dilution should be determined by the end user.
Storage Buffer	In PBS, pH7.2 (40% glycerol, 0.02% sodium azide).
Storage Instruction	Store at 4°C. For long term storage store at -20°C. Aliquot to avoid repeated freezing and thawing.
Note	This product contains sodium azide: a POISONOUS AND HAZARDOUS SUBSTANCE which should be handled by trained staff only.

Applications

- Western Blot (Cell lysate)

Western blot analysis of mouse cell line NIH-3T3 and rat cell line NBT-II.

- Western Blot (Transfected lysate)

Western blot analysis of EFO-21 cells transfected with control siRNA, target specific siRNA probe #1 and #2, using WWTR1 polyclonal antibody (Cat # PAB31829). Loading control: Anti-PPIB

- Immunohistochemistry

Immunohistochemical staining of human renal cancer shows strong nuclear positivity in tumor cells.

- Immunohistochemistry

Immunohistochemical staining of human kidney shows moderate nuclear positivity in glomerular cells and a subset of cells in distal tubules.

- Immunohistochemistry

Immunohistochemical staining of human colon shows strong nuclear positivity in a subset of lymphoid cells.

- Immunohistochemistry

Immunohistochemical staining of human placenta shows strong nuclear positivity in endothelial cells.

- Immunohistochemistry

Immunohistochemical staining of human skeletal muscle shows weak positivity in myocytes.

- Immunofluorescence

Immunofluorescent staining of human cell line U-251 MG shows localization to nucleoplasm, nuclear bodies and cytosol.

Gene Info — WWTR1

Entrez GeneID	25937
---------------	-----------------------

Gene Name	WWTR1
-----------	-------

Gene Alias	DKFZp586l1419, TAZ
------------	--------------------

Gene Description	WW domain containing transcription regulator 1
------------------	--

Omim ID	607392
---------	------------------------

Gene Ontology[Hyperlink](#)**Other Designations**

transcriptional co-activator with PDZ-binding motif (TAZ)

Disease

- [Atherosclerosis](#)
- [Calcinosis](#)
- [Coronary Artery Disease](#)