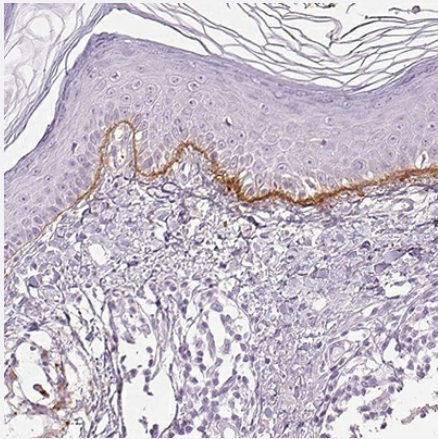


COL7A1 polyclonal antibody

Catalog # PAB31828

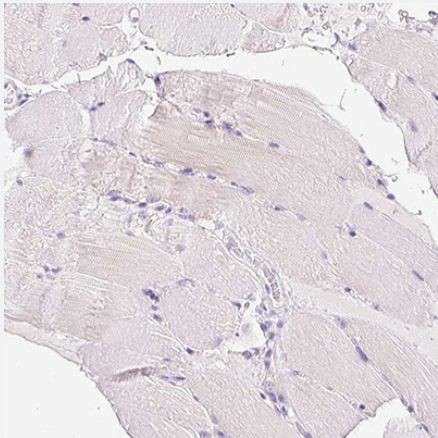
Size 100 uL

Applications



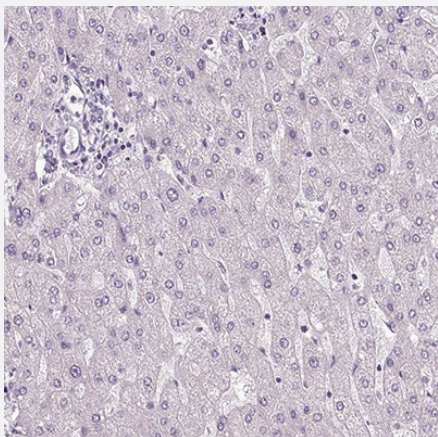
Immunohistochemistry

Immunohistochemical staining of human skin shows strong membranous positivity in epidermal cells.



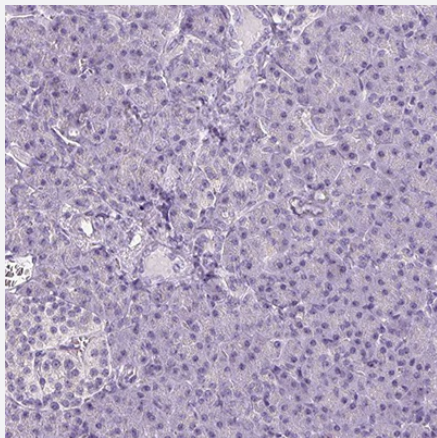
Immunohistochemistry

Immunohistochemical staining of human skeletal muscle shows no positivity in myocytes as expected.



Immunohistochemistry

Immunohistochemical staining of human liver shows no positivity in hepatocytes as expected.



Immunohistochemistry

Immunohistochemical staining of human pancreas shows no positivity in exocrine glandular cells as expected.

Specification

Product Description	Rabbit polyclonal antibody raised against recombinant human COL7A1.
Sequence	LTLYTLLEGHEVATPATVVPTGPELPVSPVTDLQATELPGQVRVSWSPVPGATQYRIVRSTQGV ERTLVLPGSQTAFDLDLVQAGLSYTVRV SARVGPREGSASVLTVRREPETPLAVPGLRVVVS DA TRVRVAWGPPAGASGFRI
Host	Rabbit
Reactivity	Human
Specificity	This antibody reacts to COL7A1.
Form	Liquid
Purification	Affinity purification
Isotype	IgG
Recommend Usage	Immunohistochemistry (1:50 - 1:200) The optimal working dilution should be determined by the end user.
Storage Buffer	In PBS, pH7.2 (40% glycerol, 0.02% sodium azide).
Storage Instruction	Store at 4°C. For long term storage store at -20°C. Aliquot to avoid repeated freezing and thawing.
Note	This product contains sodium azide: a POISONOUS AND HAZARDOUS SUBSTANCE which should be handled by trained staff only.

Applications

- Immunohistochemistry

Immunohistochemical staining of human skin shows strong membranous positivity in epidermal cells.

- Immunohistochemistry

Immunohistochemical staining of human skeletal muscle shows no positivity in myocytes as expected.

- Immunohistochemistry

Immunohistochemical staining of human liver shows no positivity in hepatocytes as expected.

- Immunohistochemistry

Immunohistochemical staining of human pancreas shows no positivity in exocrine glandular cells as expected.

Gene Info — COL7A1

Entrez GeneID [1294](#)

Gene Name COL7A1

Gene Alias EBD1, EBDCT, EBR1

Gene Description collagen, type VII, alpha 1

Omim ID [120120](#) [131705](#) [131750](#) [131850](#) [132000](#) [226600](#) [604129](#) [607523](#)

Gene Ontology [Hyperlink](#)

Gene Summary This gene encodes the alpha chain of type VII collagen. The type VII collagen fibril, composed of three identical alpha collagen chains, is restricted to the basement zone beneath stratified squamous epithelia. It functions as an anchoring fibril between the external epithelia and the underlying stroma. Mutations in this gene are associated with all forms of dystrophic epidermolysis bullosa. In the absence of mutations, however, an acquired form of this disease can result from an autoimmune response made to type VII collagen. [provided by RefSeq]

Other Designations LC collagen|alpha 1 type VII collagen|collagen VII, alpha-1 polypeptide|long chain collagen

Disease

- [Epidermolysis Bullosa](#)

- [Epidermolysis Bullosa Dystrophica](#)

- [Genetic Predisposition to Disease](#)
- [Pruritus](#)
- [Schizophrenia](#)