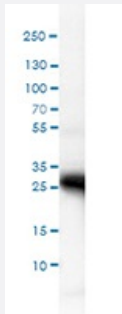


# AQP4 polyclonal antibody

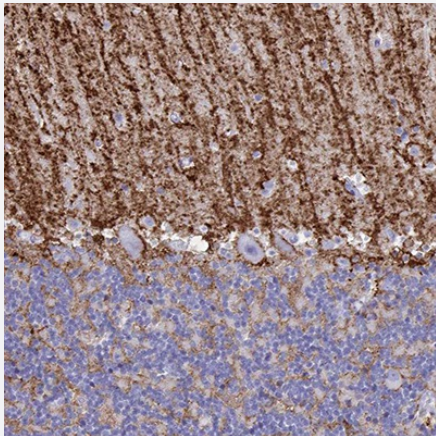
Catalog # PAB31827      Size 100 uL

## Applications



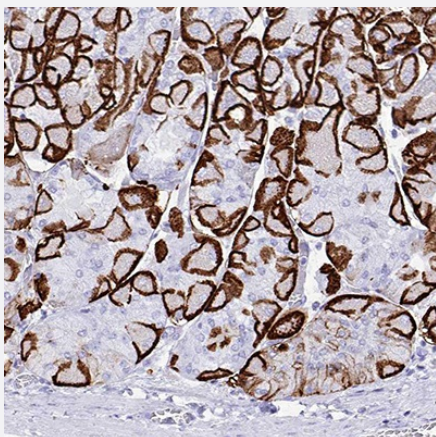
### Western Blot (Tissue lysate)

Western blot analysis of human brain tissue.



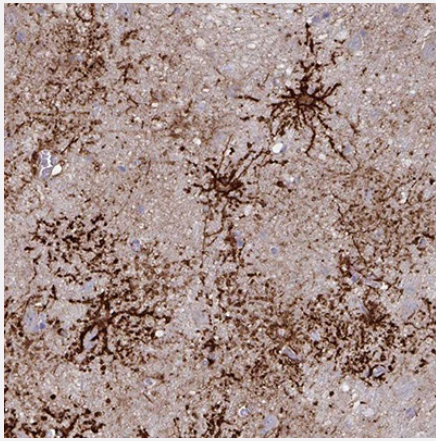
### Immunohistochemistry

Immunohistochemical staining of human cerebellum shows strong membranous positivity in astrocytes, mainly in the molecular layer.



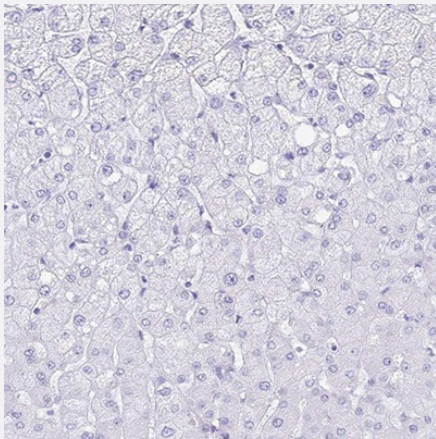
### Immunohistochemistry

Immunohistochemical staining of human stomach shows strong membranous positivity in glandular cells.



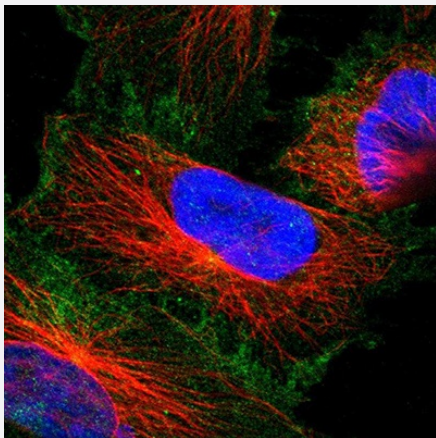
### Immunohistochemistry

Immunohistochemical staining of human cerebral cortex shows strong membranous positivity in astrocytes.



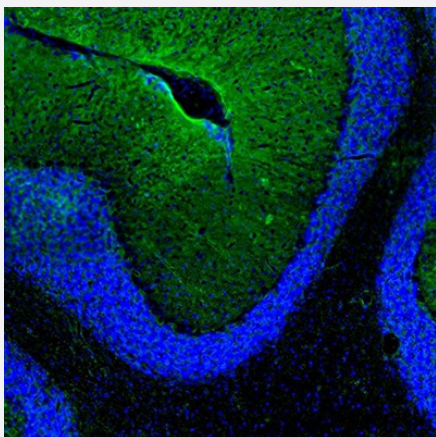
### Immunohistochemistry

Immunohistochemical staining of human liver shows no positivity in hepatocytes, as expected.



### Immunofluorescence

Immunofluorescent staining of human cell line U-251 MG shows localization to plasma membrane.



### Immunofluorescence

Immunofluorescent staining of mouse cerebellum shows positivity in astrocytes, mainly in the molecular layer.

## Specification

<b>Product Description</b>	Rabbit polyclonal antibody raised against recombinant human AQP4.
<b>Sequence</b>	CPDVEFKRRFKEAFSKAAQQTKGSYMEVEDNRSQVETDDLILKPGVVHVIDVDRGEEKKGKDQSGEVLSSV
<b>Host</b>	Rabbit
<b>Reactivity</b>	Human, Mouse
<b>Specificity</b>	This antibody reacts to AQP4.
<b>Form</b>	Liquid
<b>Purification</b>	Affinity purification
<b>Isotype</b>	IgG
<b>Recommend Usage</b>	Immunofluorescence (0.25-2 ug/mL) Immunohistochemistry (1:2500 - 1:5000) Western Blot (0.04-0.4 ug/mL) The optimal working dilution should be determined by the end user.
<b>Storage Buffer</b>	In PBS, pH7.2 (40% glycerol, 0.02% sodium azide).
<b>Storage Instruction</b>	Store at 4°C. For long term storage store at -20°C. Aliquot to avoid repeated freezing and thawing.
<b>Note</b>	This product contains sodium azide: a POISONOUS AND HAZARDOUS SUBSTANCE which should be handled by trained staff only.

## Applications

- Western Blot (Tissue lysate)

Western blot analysis of human brain tissue.

- Immunohistochemistry

Immunohistochemical staining of human cerebellum shows strong membranous positivity in astrocytes, mainly in the molecular layer.

- Immunohistochemistry

Immunohistochemical staining of human stomach shows strong membranous positivity in glandular cells.

- Immunohistochemistry

Immunohistochemical staining of human cerebral cortex shows strong membranous positivity in astrocytes.

- Immunohistochemistry

Immunohistochemical staining of human liver shows no positivity in hepatocytes, as expected.

- Immunofluorescence

Immunofluorescent staining of human cell line U-251 MG shows localization to plasma membrane.

- Immunofluorescence

Immunofluorescent staining of mouse cerebellum shows positivity in astrocytes, mainly in the molecular layer.

## Gene Info — AQP4

Entrez GeneID

[361](#)

Gene Name

AQP4

Gene Alias

HMW2, MGC22454, MW2

Gene Description

aquaporin 4

Omim ID

[600308](#)

Gene Ontology

[Hyperlink](#)

Gene Summary

This gene encodes a member of the aquaporin family of intrinsic membrane proteins that function as water-selective channels in the plasma membranes of many cells. The encoded protein is the predominant aquaporin found in brain. Two alternatively spliced transcript variants encoding distinct isoforms have been found for this gene. [provided by RefSeq]

Other Designations

aquaporin type4|aquaporin-4|mercurial-insensitive water channel

## Disease

- [Atherosclerosis](#)

- [Brain Edema](#)

- [Brain Injuries](#)

- [Epilepsy](#)

- [Genetic Predisposition to Disease](#)
- [Infarction](#)
- [Migraine Disorders](#)
- [Schizophrenia](#)
- [Sclerosis](#)
- [Sudden Infant Death](#)