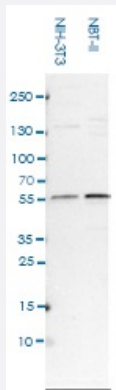


CRBN polyclonal antibody

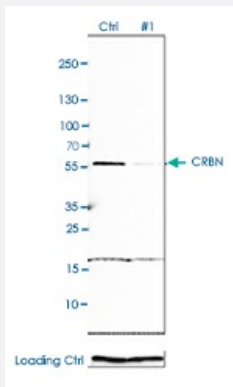
Catalog # PAB31825 Size 100 uL

Applications



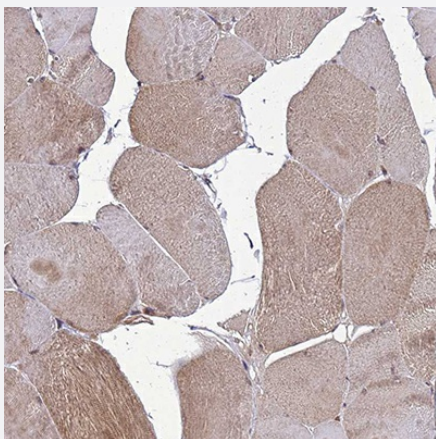
Western Blot (Cell lysate)

Western blot analysis of mouse cell lines NIH-3T3 and rat cell line NBT-II.



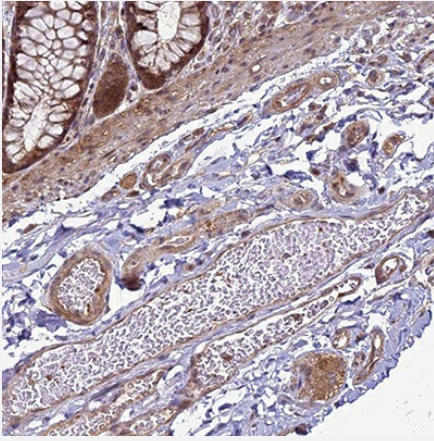
Western Blot (Transfected lysate)

Western blot analysis of HEK293 cells transfected with control siRNA, target specific siRNA probe # 1, using CRBN polyclonal antibody (Cat # PAB31825). Loading control: Anti-GAPDH.



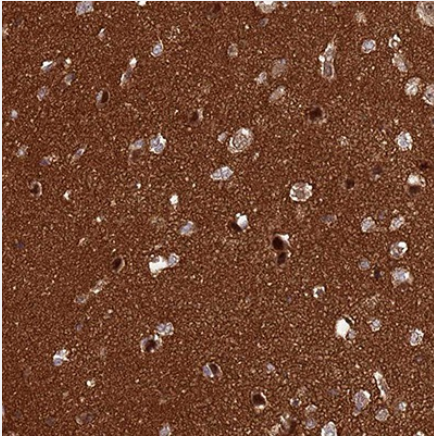
Immunohistochemistry

Immunohistochemical staining of human skeletal muscle shows only weak cytoplasmic positivity in striated muscle fibers.



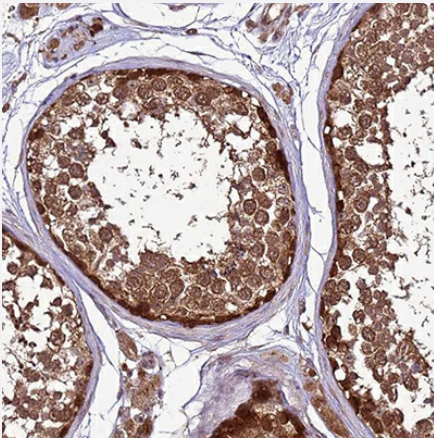
Immunohistochemistry

Immunohistochemical staining of human colon shows moderate cytoplasmic and nuclear positivity in peripheral ganglion.



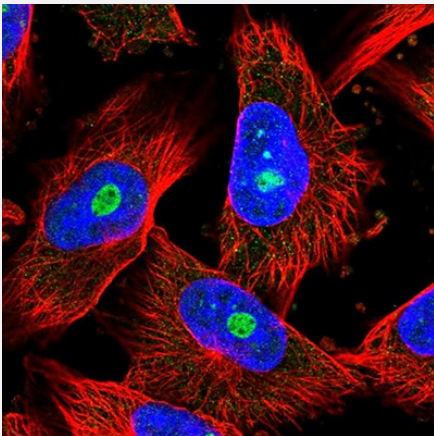
Immunohistochemistry

Immunohistochemical staining of human cerebral cortex shows strong positivity in neuropil.



Immunohistochemistry

Immunohistochemical staining of human testis shows strong positivity in cells in seminiferous ducts.



Immunofluorescence

Immunofluorescent staining of human cell line U-251 MG shows localization to nucleoli.

Specification

Product Description	Rabbit polyclonal antibody raised against recombinant human CRBN.
Sequence	EVEDQDSKEAKKPNINFDTSLPTSHTYLGADMEEFHGRTLHDDDDSCQVIPVLPQVMMILIPGQTLP LQLFHPQEVSMVRNLIQKDRTFAVLAYSINVQERE
Host	Rabbit
Reactivity	Human, Mouse, Rat
Specificity	This antibody reacts to CRBN.
Form	Liquid
Purification	Affinity purification
Isotype	IgG
Recommend Usage	Immunofluorescence (0.25-2 ug/mL) Immunohistochemistry (1:200 - 1:500) Western Blot (0.04-0.4 ug/mL) The optimal working dilution should be determined by the end user.
Storage Buffer	In PBS, pH7.2 (40% glycerol, 0.02% sodium azide).
Storage Instruction	Store at 4°C. For long term storage store at -20°C. Aliquot to avoid repeated freezing and thawing.
Note	This product contains sodium azide: a POISONOUS AND HAZARDOUS SUBSTANCE which should be handled by trained staff only.

Applications

- Western Blot (Cell lysate)

Western blot analysis of mouse cell lines NIH-3T3 and rat cell line NBT-II.

- Western Blot (Transfected lysate)

Western blot analysis of HEK293 cells transfected with control siRNA, target specific siRNA probe # 1, using CRBN polyclonal antibody (Cat # PAB31825). Loading control: Anti-GAPDH.

- Immunohistochemistry

Immunohistochemical staining of human skeletal muscle shows only weak cytoplasmic positivity in striated muscle fibers.

- Immunohistochemistry

Immunohistochemical staining of human colon shows moderate cytoplasmic and nuclear positivity in peripheral ganglion.

- Immunohistochemistry

Immunohistochemical staining of human cerebral cortex shows strong positivity in neuropil.

- Immunohistochemistry

Immunohistochemical staining of human testis shows strong positivity in cells in seminiferous ducts.

- Immunofluorescence

Immunofluorescent staining of human cell line U-251 MG shows localization to nucleoli.

Gene Info — CRBN

Entrez GeneID	51185
---------------	-----------------------

Gene Name	CRBN
-----------	------

Gene Alias	DKFZp781K0715, MGC27358, MRT2A
------------	--------------------------------

Gene Description	cereblon
------------------	----------

Omim ID	607417 609262
---------	---

Gene Ontology	Hyperlink
---------------	---------------------------

Gene Summary	non-syndromic
--------------	---------------

Other Designations	mental retardation, non-syndromic, autosomal recessive, 2A protein x 0001
--------------------	---